

RF CHARACTERISTICS

Number of ways	: 3
Frequency range	: 0 - 40 GHz
Impedance	: 50 Ohms

Frequency (GHz)	DC - 6	6 - 12.4	12.4 - 18	18 - 26.5	26.5 - 40
VSWR max	1,30	1,40	1,50	1,70	1,95
Insertion loss max	0.20 dB	0.40 dB	0.50 dB	0.70 dB	1.00 dB
Isolation min	80 dB	70 dB	70 dB	60 dB	55 dB
Average power (*)	40 W	30 W	25 W	15 W	5 W

ELECTRICAL CHARACTERISTICS

Actuator	:	NORMALLY OPEN
Nominal current **	:	250 mA
Actuator voltage (Vcc)	:	12V (10.2 to 13V)
Terminals	:	25 pins D-SUB male connector
TTL inputs (E)	- High level	2.2 to 5.5 V / 800µA at 5.5 V
	- Low level	0 to 0.8 V / 20µA at 0.8 V

MECHANICAL CHARACTERISTICS

Connectors	: SMA 2.9 female per MIL-C 39012
Life	: 7 million cycles per position
Switching Time***	: < 15 ms
Construction	: Splashproof
Weight	: < 220 g

ENVIRONMENTAL CHARACTERISTICS

Operating temperature range : -40°C to +85°C
Storage temperature range : -55°C to +85°C

(* Average power at 25°C per RF Path)

(** At 25° C ±10%)

(*** Nominal voltage ; 25° C)



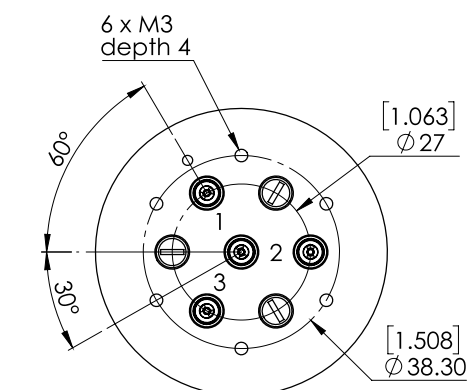
PAGE **2/2**

ISSUE **18-11-25**

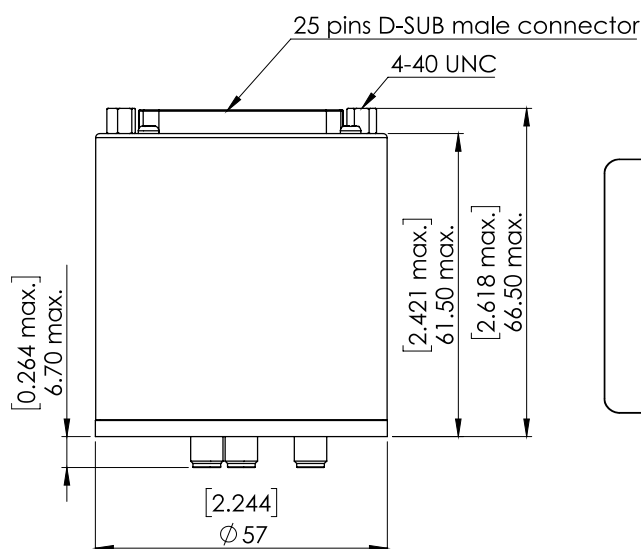
SERIE : **SPnT**

PART NUMBER : **R573802325**

DRAWING

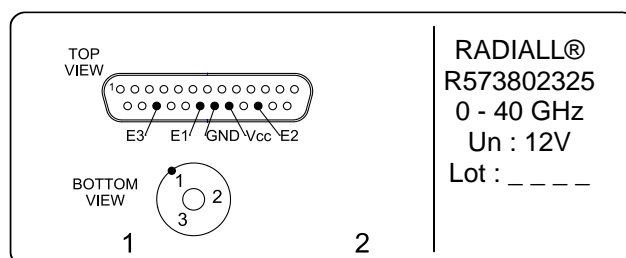


TTL input	RF Continuity
E1 = 1	IN ↔ 1
E2 = 1	IN ↔ 2
E3 = 1	IN ↔ 3



General tolerances : ±0,5 mm [0,02 in]

LABEL



SCHEMATIC DIAGRAM

