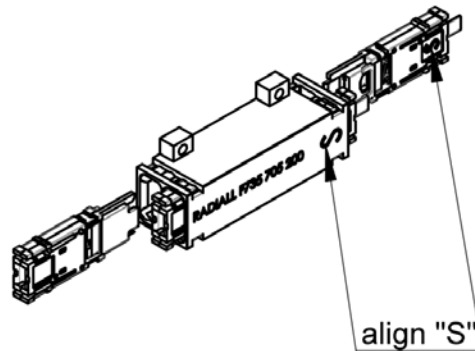
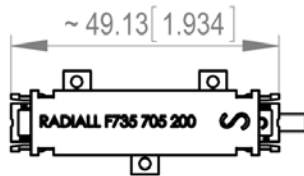
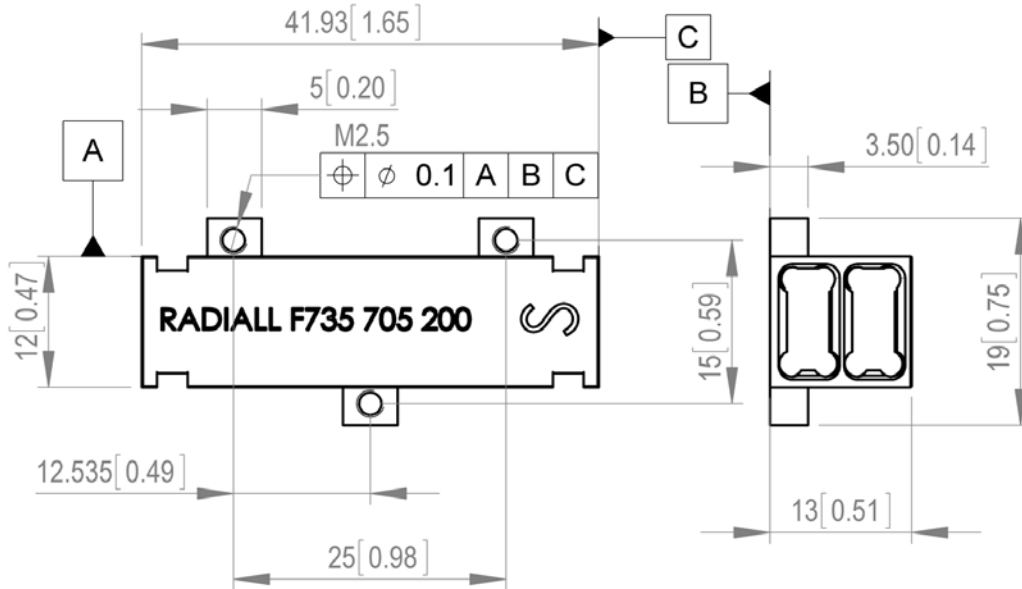


PAGE 1/2	ISSUE 2015/03/16	SERIES C-MTITAN™	PART NUMBER F735 705 200
----------	------------------	------------------	--------------------------

C-MTITAN™ DUPLEX ADAPTER – FOR PCB



Dimension: mm [Inch]

C-MTitan™ protects a standard MT ferrule to maintain excellent optical performance and provide high density connectivity to harsh environments.

FEATURES:

- C-MTitan™ Duplex Adapter to be mounted on PCB
- Provide perfect alignment of 2 C-MTitan™ cartridges and offer an interconnect solution for inside the box applications
- No tool is needed to insert and extract the cartridges – Just align the “S” marks of the cartridge and the adapter to insert the cartridge in correct position

PAGE 2/2	ISSUE 2015/03/16	SERIES C-MTITAN™	PART NUMBER F735 705 200
----------	------------------	------------------	---------------------------------

CHARACTERISTICS

Mechanical:

Endurance: TIA/EIA 364-09	200 matings
Vibration: TIA/EIA-455-11	35.4 Grms

Environmental:

Temperature range:	-55 °C / +125 °C (<i>cable dependent</i>)
Salt spray:	96 h

Material:

Material:	6061 T6/T651 per AMS-4027, ASTM-B-221 or 209
Finish:	Nickel coated (Electrolytic over electro less nickel)

Weight:

7.4 g approx.

