

SALES DRAWING

620 303

TITLE : SIZE 22 SOCKET CONTACT REAR RELEASE REAR REMOVABLE
2 LEVELS WIRE WRAP POST

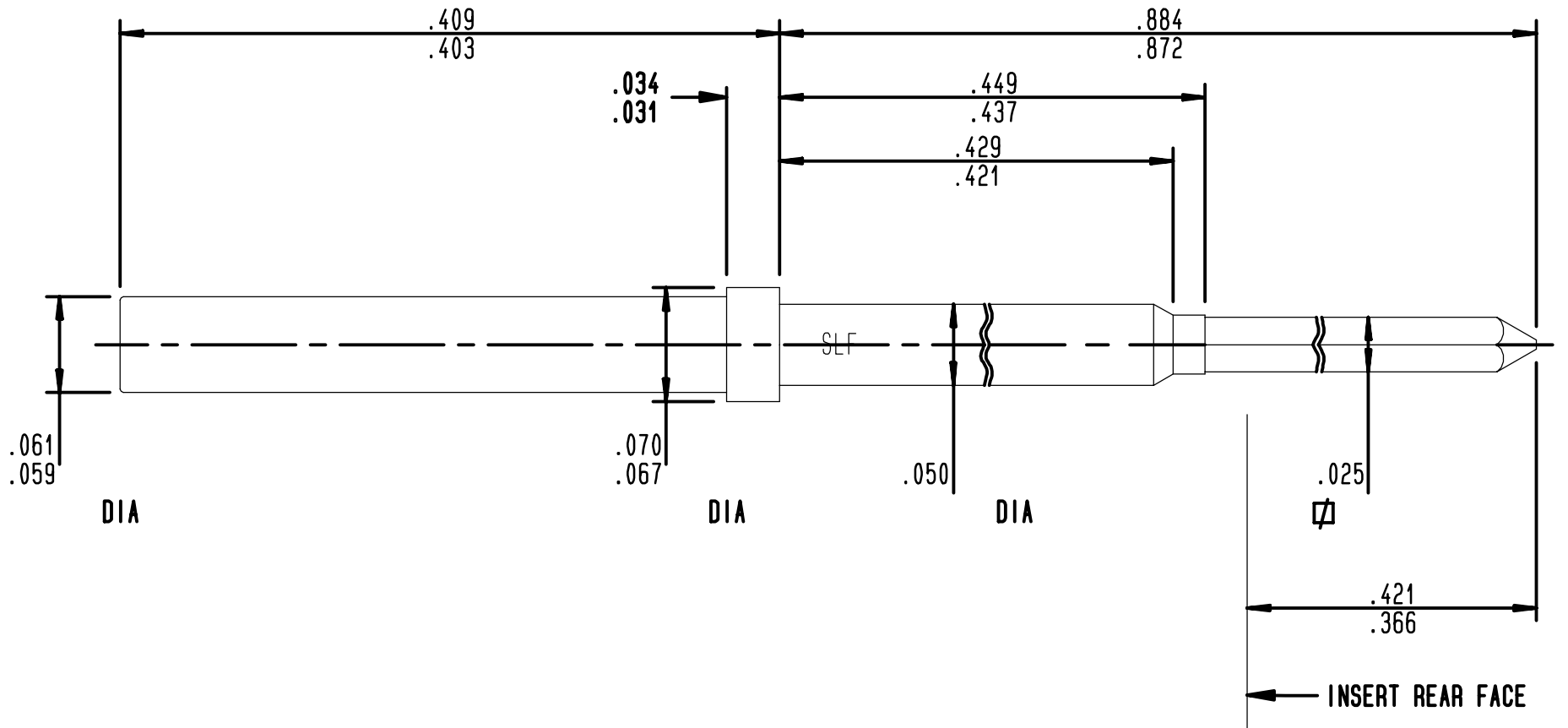
Edition : _____

Page

SERIE : NSX

1 / 1

PEN : _____



MATERIAL AND FINISH

CONTACT: COPPER ALLOY 50 MICROINCHES OF GOLD OVER NICKEL
 PROTECTIVE SLEEVE: STAINLESS STEEL PASSIVATED
 INSERTION/EXTRACTION TOOL: M81969/1_01 (RADIAL INS. 282880/EXT. 282890)

THIS DOCUMENT WAS CREATED BY CAD. IT CANNOT BE MODIFIED EXCEPT BY CAD.

IND	MODIFICATIONS	DATE	VISA
Creation	Date: <u>MAY14.91</u>		
Up-date	Date: _____		