

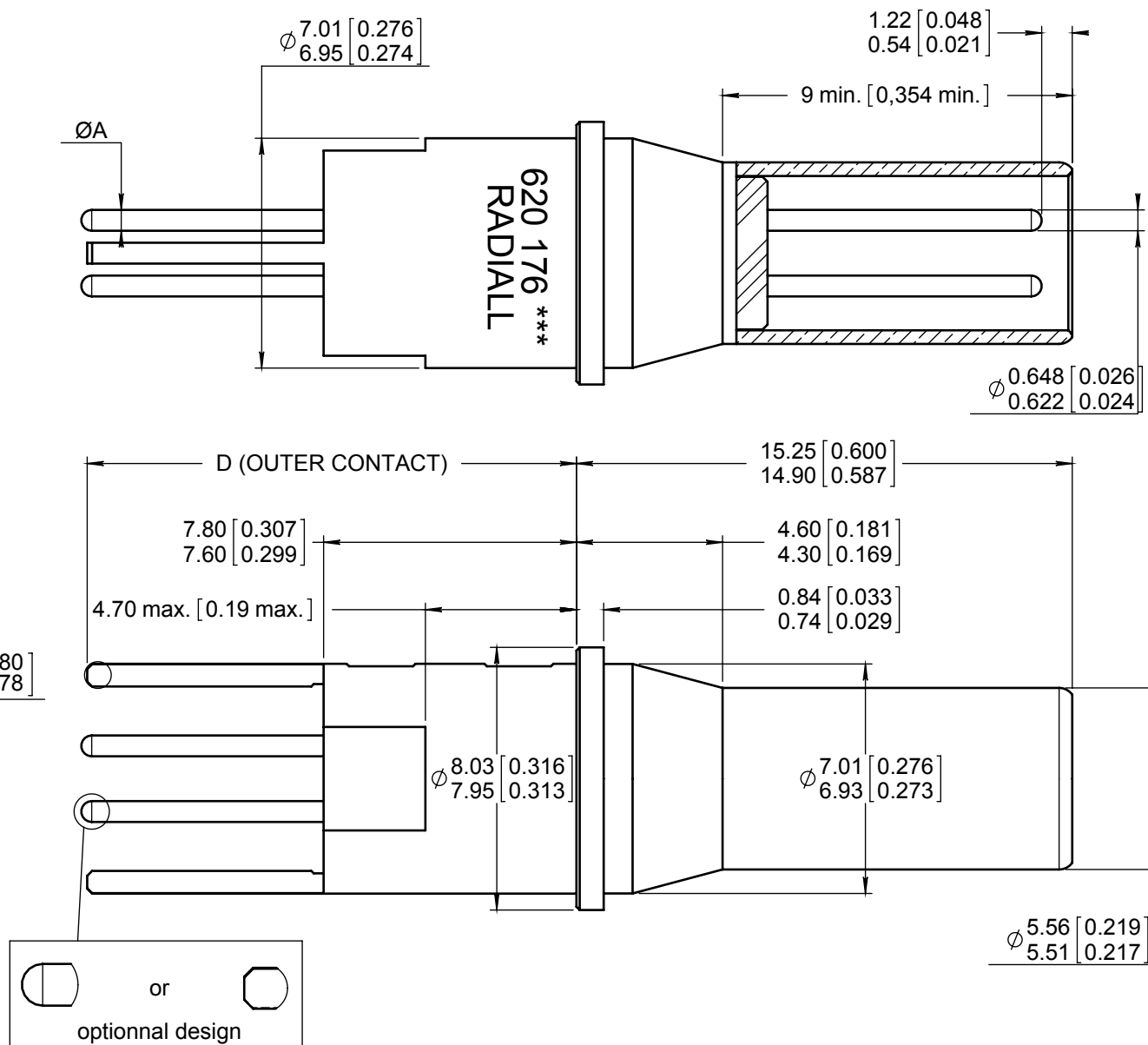
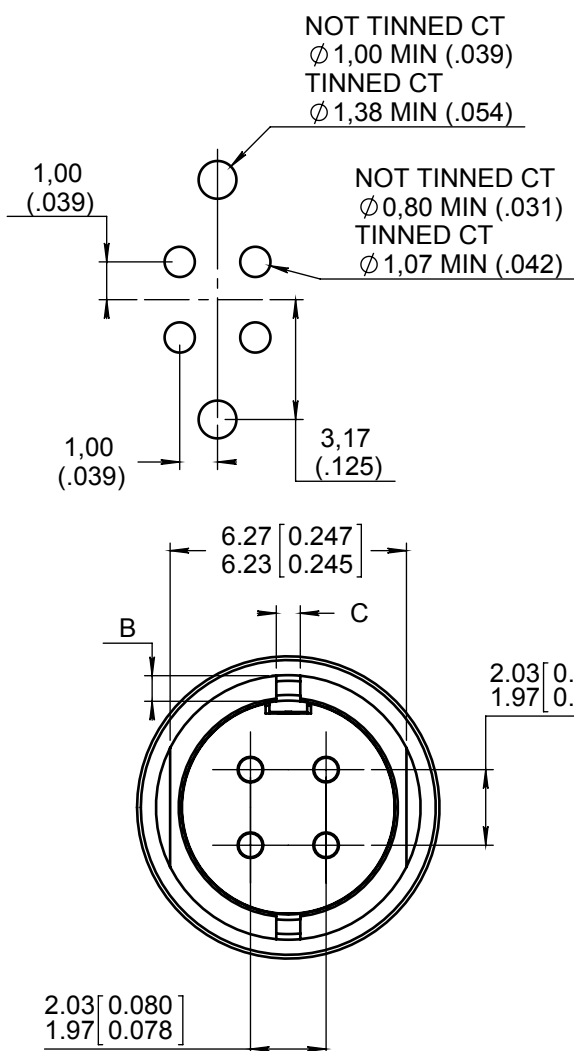
Series  
NSX

SIZE 8 FRONT RELEASE, FRONT REMOVABLE  
PC POST PIN QUADRAX CONTACTS

Issue:  
Nov. 13, 2013

Page  
1/2

### RECOMMENDED PC DRILL PATTERN



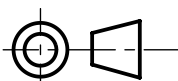
	CTS P/N	Type	ØA		B		C		D	
			BEFORE TINNING	AFTER TINNING	BEFORE TINNING	AFTER TINNING	BEFORE TINNING	AFTER TINNING	BEFORE TINNING	AFTER TINNING
NOT TINNED	620 176 009	YA		NA		NA		NA		NA
TIN LEADED	620 176 016	ZA	Ø0,67 (.026)	0,80 MAX (.031)	0,675 (.0265)	0,80MAX(.031)	0,675 (.0265)	0,80 MAX (.031)	12,40 (.488)	12,90 MAX (.508)
ROHS TINNED	620 176 509	RA	Ø0,60 (.023)	0,80 MAX (.031)	0,595 (.0234)	0,80MAX(.031)	0,595 (.0234)	0,80 MAX (.031)	12,20 (.480)	12,90 MAX (.508)
NOT TINNED	620 176 008	Y		NA		NA		NA		NA
TIN LEADED	620 176 010	Z	Ø0,67 (.026)	0,80 MAX (.031)	0,675 (.0265)	0,80MAX(.031)	0,675 (.0265)	0,80 MAX (.031)	15,00 (.591)	15,50 MAX (.611)
ROHS TINNED	620 176 508	R	Ø0,60 (.023)	0,80 MAX (.031)	0,595 (.0234)	0,80MAX(.031)	0,595 (.0234)	0,80 MAX (.031)	14,80 (.583)	15,50 MAX (.611)
NOT TINNED	620 176 011	YB		NA		NA		NA		NA
TIN LEADED	620 176 012	ZB	Ø0,67 (.026)	0,80 MAX (.031)	0,675 (.0265)	0,80MAX(.031)	0,675 (.0265)	0,80 MAX (.031)	18,10 (.713)	18,60 MAX (.732)
ROHS TINNED	620 176 511	RB	Ø0,60 (.023)	0,80 MAX (.031)	0,595 (.0234)	0,80MAX(.031)	0,595 (.0234)	0,80 MAX (.031)	17,90 (.705)	18,60 MAX (.732)
NOT TINNED	620 176 013	YC		NA		NA		NA		NA
TIN LEADED	620 176 014	ZC	Ø0,67 (.026)	0,80 MAX (.031)	0,675 (.0265)	0,80MAX(.031)	0,675 (.0265)	0,80 MAX (.031)	21,40 (.843)	21,90 MAX (.862)
ROHS TINNED	620 176 513	RC	Ø0,60 (.023)	0,80 MAX (.031)	0,595 (.0234)	0,80MAX(.031)	0,595 (.0234)	0,80 MAX (.031)	21,20 (.835)	21,90 MAX (.862)

MATERIAL:  
-OUTER CONTACT: BRASS PER ASTM B 16 OR ASTM B 453 OR EN 12164  
-CENTER CONTACT: LEADED NICKEL COPPER (C97)  
-DIELECTRIC: PTFE PER ASTM D 1710 OR EQUIVALENT

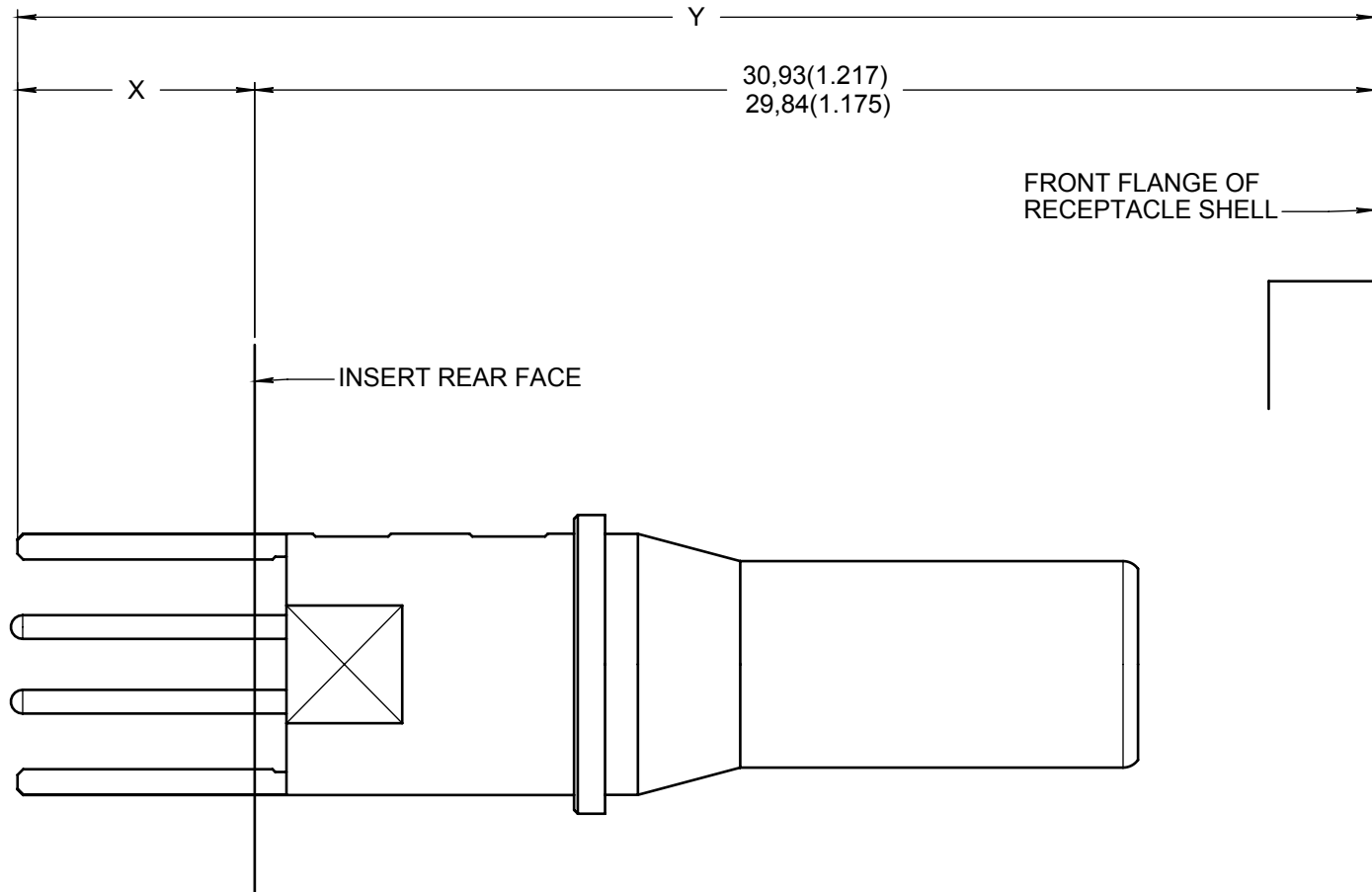
FINISH:  
-ALL METAL PARTS: PLATING .00005 INCH OF GOLD PER SAE 2422 OVER NICKEL PER SAE AMS QQ N 290  
PVD SOLDER CONTACT AREA WHICH IS :  
- TIN LEADED PER QQ S 571  
- ROHS TINNED

EXTRACTION TOOL: RADIALL P/N 282 549 009

DIMENSIONS : mm (inch are given for information only)



CREATION	Date	Description	Name	Approved
	Nov. 13, 13	Dimension mistake on rear view	Branjonneau	Dupuis
PEN:	Sept. 05, 11	Added optionnal design for center contact and modified Dim D for Y, Z, R Type	Moutault	Dupuis
	Dec. 11, 08	Added ROHS tinned contacts	Legendre	Brochet
NOM: MACARI JP.	Nov. 21, 08	Supress contact P/N 620 176 018	Macari	Legendre
DATE: July 23, 2001	Mar. 14, 08	Added contact P/N 620 176 018	Macari	Legendre
APPR.: VAN DEN B.	Mar. 17, 07	Updated table page 2	Macari	Legendre
	Issue	Revisions	Name	Approved



	CTS P/N	Type	X NSX/MPX		Y NSX/MPX	
			BEFORE TINNING	AFTER TINNING	BEFORE TINNING	AFTER TINNING
NOT TINNED	620 176 009	YA		NA		NA
TIN LEADED	620 176 016	ZA	4,60 (.181)		35,20 (1.386)	
<b>ROHS TINNED</b>	<b>620 176 509</b>	<b>RA</b>	3,80 (.150)	5,10 MAX (.200)	33,80 (1.330)	35,70 MAX (1.405)
NOT TINNED	620 176 008	Y		NA		NA
TIN LEADED	620 176 010	Z	7,20 (.283)		37,80 (1.488)	
<b>ROHS TINNED</b>	<b>620 176 508</b>	<b>R</b>	6,40 (.252)	7,70 MAX (.303)	36,40 (1.433)	38,30 MAX (1.508)
NOT TINNED	620 176 011	YB		NA		NA
TIN LEADED	620 176 012	ZB	10,30 (.406)		41,00 (1.614)	
<b>ROHS TINNED</b>	<b>620 176 511</b>	<b>RB</b>	9,50 (.374)	10,80 MAX (.425)	39,60 (1.559)	41,50 MAX (1.634)
NOT TINNED	620 176 013	YC		NA		NA
TIN LEADED	620 176 014	ZC	13,60 (.535)		44,20 (1.740)	
<b>ROHS TINNED</b>	<b>620 176 513</b>	<b>RC</b>	12,80 (.504)	14,10 MAX (.555)	42,80 (1.685)	44,70 MAX (1.760)

Confidential information not to be disclosed to third parties without Radiall approval. This information is given as an indication. In the continual goal to improve our products, we reserve the right to make any modifications judged necessary.

4112\_9311