

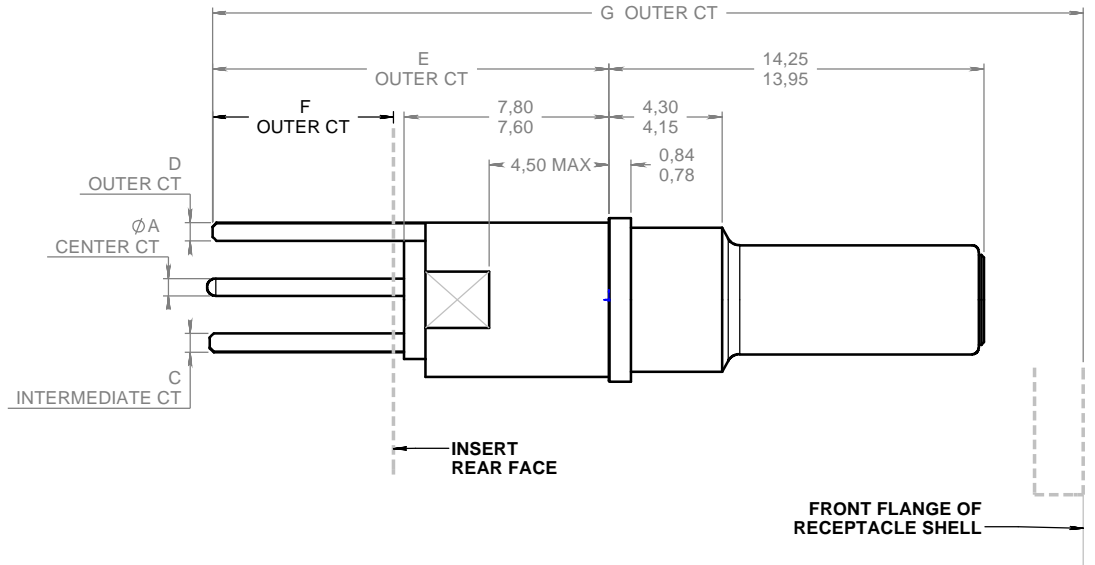
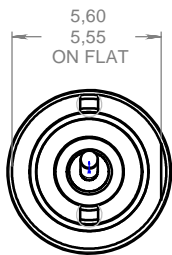
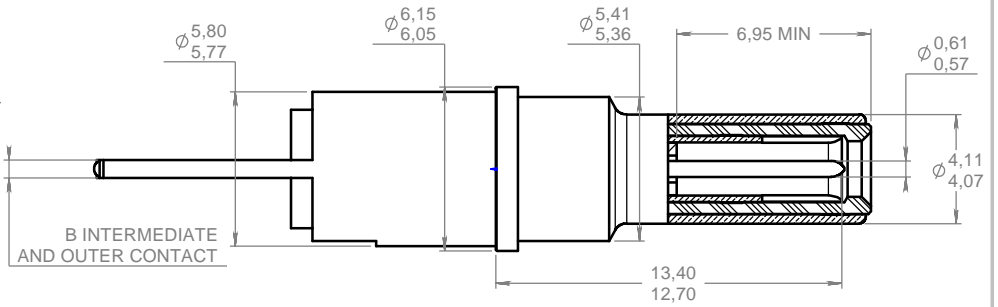
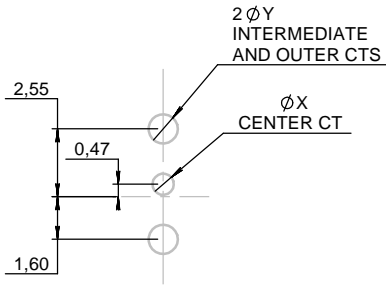
Series
NSX

SIZE 10 FRONT RELEASE, FRONT REMOVABLE
PC POST PIN TRIAX CONTACTS

Issue:
Sept. 29, 2009

Page
1/2

**RECOMMENDED
PC DRILL PATTERN**



MATERIAL:

- OUTER AND CENTER CONTACT: LEADED NICKEL COPPER (C97)
- INTERMEDIATE CONTACT: BERYLLIUM COPPER PER ASTM B 196
- DIELECTRIC : PTFE PER ASTM D 1710 OR EQUIVALENT

FINISH:

- ALL METAL PARTS: .00005 INCH GOLD PER SAE AMS-2422 OVER NICKEL PER SAE AMS-QQ-N-290
- PWD SOLDER CONTACT AREA WHICH IS: -TIN LEADED PER QQ S 571
- ROHS TINNED

EXTRACTION TOOL: 282 549 032
INSERTION TOOL: 282 549 035

DIMENSIONS : mm (inch are given for information only)



This information is given as an indication. In the continual goal to improve our products, we reserve the right to make any modifications judged necessary.

4112_9311

CREATION					
PEN:					
NOM: MACARI					
DATE: Sept. 29, 2009	/	/	/	/	/
APPR.: LEGENDRE	Issue	Revisions	Name	Approved	

	CTS P/N	CONTACT TERMINATION	ØA		B		C		D	
			BEFORE TINNING	AFTER TINNING	BEFORE TINNING	AFTER TINNING	BEFORE TINNING	AFTER TINNING	BEFORE TINNING	AFTER TINNING
NOT TINNED	620 169 011	YA		NA		NA		NA		NA
TIN LEADED	620 169 012	ZA	Ø0,67		0,67		0,67		0,67	
ROHS TINNED	620 169 013	RA	Ø0,60	0,80 MAX	0,60	0,80 MAX	0,60	0,80 MAX	0,60	0,80 MAX
NOT TINNED	620 169 001	Y		NA		NA		NA		NA
TIN LEADED	620 169 002	Z	Ø0,67		0,67		0,67		0,67	
ROHS TINNED	620 169 003	R	Ø0,60	0,80 MAX	0,60	0,80 MAX	0,60	0,80 MAX	0,60	0,80 MAX
NOT TINNED	620 169 021	YB		NA		NA		NA		NA
TIN LEADED	620 169 022	ZB	Ø0,67		0,67		0,67		0,67	
ROHS TINNED	620 169 023	RB	Ø0,60	0,80 MAX	0,60	0,80 MAX	0,60	0,80 MAX	0,60	0,80 MAX
NOT TINNED	620 169 031	YC		NA		NA		NA		NA
TIN LEADED	620 169 032	ZC	Ø0,67		0,67		0,67		0,67	
ROHS TINNED	620 169 033	RC	Ø0,60	0,80 MAX	0,60	0,80 MAX	0,60	0,80 MAX	0,60	0,80 MAX
			E		F		G			
					EXTENTION / INSERT REAR FACE		EXTENTION / FRONT FLANGE OF SHELL		ØX	ØY
		CONTACT TERMINATION	BEFORE TINNING	AFTER TINNING	BEFORE TINNING	AFTER TINNING	BEFORE TINNING	AFTER TINNING		
NOT TINNED	620 169 011	YA		NA		NA		NA	Ø0,80 MIN	Ø1,10 MIN
TIN LEADED	620 169 012	ZA	12,45		4,60		35,20			
ROHS TINNED	620 169 013	RA	12,25	12,95 MAX	3,80	5,10 MAX	33,80	35,70 MAX	Ø0,95 MIN	Ø1,25 MIN
NOT TINNED	620 169 001	Y		NA		NA		NA	Ø0,80 MIN	Ø1,10 MIN
TIN LEADED	620 169 002	Z	15,00		7,20		37,80			
ROHS TINNED	620 169 003	R	14,80	15,50 MAX	6,40	7,70 MAX	36,40	38,30 MAX	Ø0,95 MIN	Ø1,25 MIN
NOT TINNED	620 169 021	YB		NA		NA		NA	Ø0,80 MIN	Ø1,10 MIN
TIN LEADED	620 169 022	ZB	18,20		10,30		41,00			
ROHS TINNED	620 169 023	RB	18,00	18,70 MAX	9,50	10,80 MAX	39,60	41,50 MAX	Ø0,95 MIN	Ø1,25 MIN
NOT TINNED	620 169 031	YC		NA		NA		NA	Ø0,80 MIN	Ø1,10 MIN
TIN LEADED	620 169 032	ZC	21,40		13,60		44,20			
ROHS TINNED	620 169 033	RC	21,20	21,90 MAX	12,80	14,10 MAX	42,80	44,70 MAX	Ø0,95 MIN	Ø1,25 MIN

This information is given as an indication. In the continual goal to improve our products, we reserve the right to make any modifications judged necessary.

4112_9311