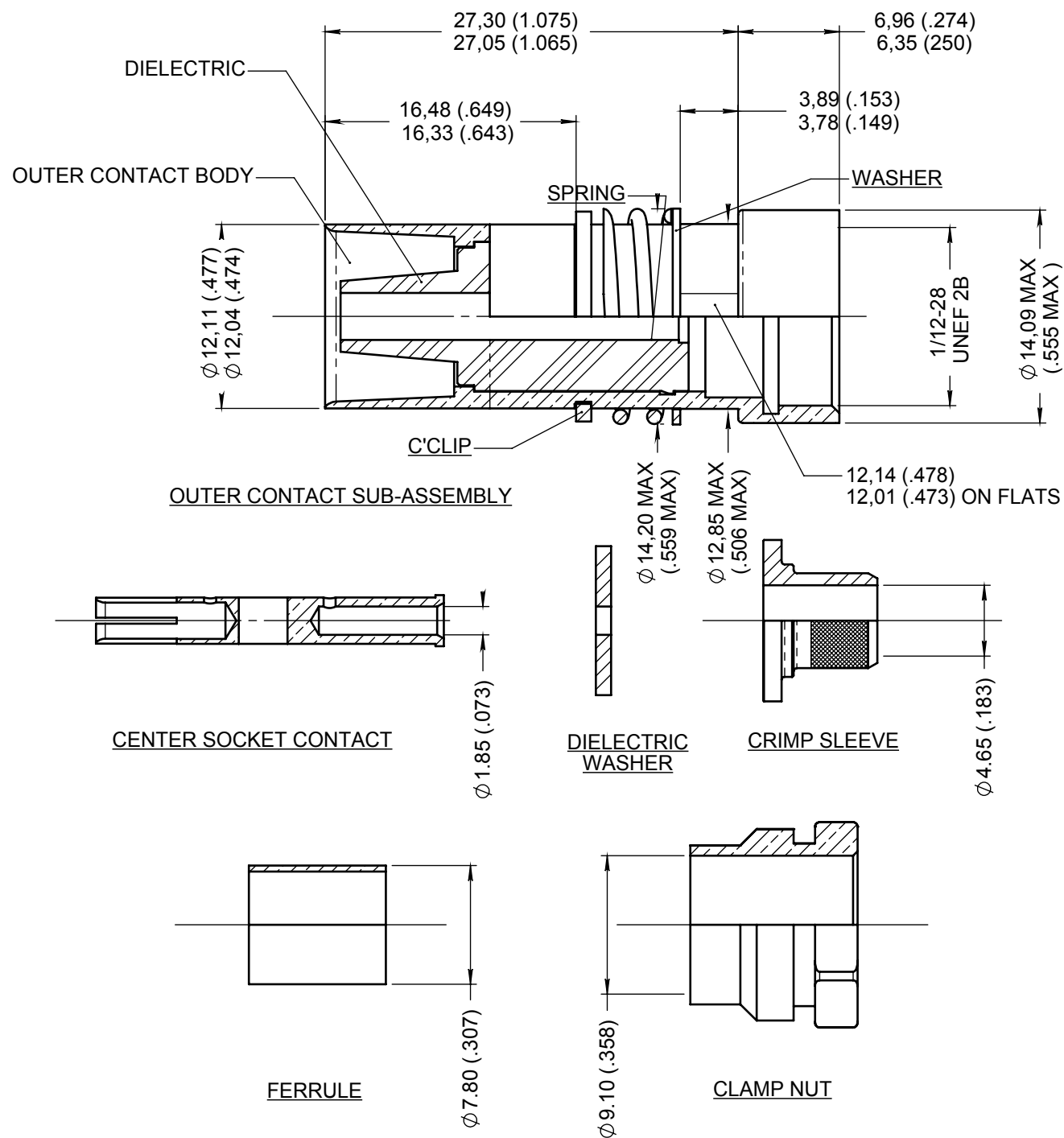


**Series  
NSX**
**T-CAS SIZE 1 RF CONTACT  
FOR ECS 311601 CABLE  
CRIMP TERMINAISON**
**Issue:  
Mar. 13, 2017**
**Page  
1/1**

**WIRING INSTRUCTIONS: SEA DRAWING MICT0100000**
**MATERIAL:**

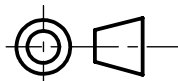
- OUTER CONTACT BODY AND CENTER CONTACT: BERYLLIUM COPPER PER ASTM-B-196
- DIELECTRIC AND DIELECTRIC WASHER: PTFE PER ASTM-D-1710 OR EQUIVALENT
- CRIMP SLEEVE: BRASS PER ASTM-B-16 / B-16M
- FERRULE: BRASS PER ASTM B 453/B453 M
- CLAMP NUT: COPPER ALLOY
- SPRING, C'CLIP AND WASHER: STAINLESS STEEL PER SAE-AMS 5688

**FINISH:**

- OUTER CONTACT BODY, CRIMP SLEEVE, CENTER CONTACT, CLAMP NUT AND FERRULE: PLATING .00005 INCH OF GOLD PER MIL-G-45204 TYPE I OR II GRADE C OR D CLASS 1 OVER NICKEL QQ-N-290
- WASHER: PASSIVATED
- C'CLIP: NICKEL PROTECTED

**ELECTRICAL CHARACTERISTICS:**

- IMPEDANCE : 50 OHMS
- DIELECTRIC WITHSTANDING VOLTAGE : 1500 V

**DIMENSIONS : mm (inch are given for information only)**


Estimated weight : 21 g

<b>CREATION</b>				
<b>PEN:</b>				
<b>NOM: FALETTI</b>	Mar. 13, 17	Updated flat dimension per ARINC 600	Pécault	Legendre
<b>DATE: Oct. 07, 1991</b>	Oct. 10, 04	General modification	Mondot	Macari
<b>APPR.:</b>	Dec. 09, 96	Redrawn	Valgresy	Baldyrou
	Issue	Revisions	Name	Approved

620149EN

**RADIALL PROPRIETARY INFORMATION**

This document contains proprietary information and such information shall not be disclosed to any third party for any purpose whatsoever or used for manufacturing purposes without prior written agreement from RADIALL. This information is given as an indication. In the continual goal to improve our products, we reserve the right to make any modifications judged necessary.

4112\_9311