

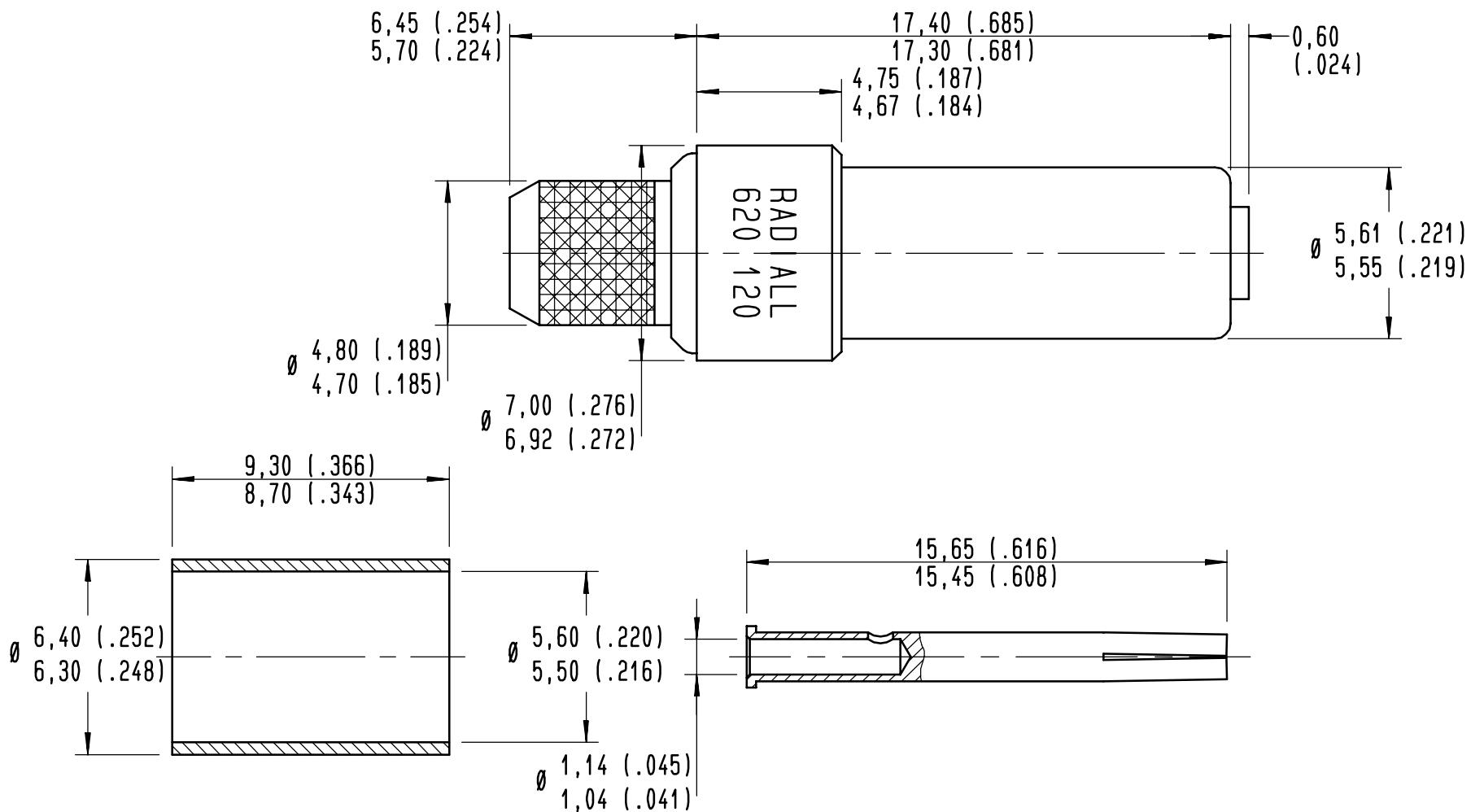


Series  
NSX

SIZE 5 COAXIAL PIN CONTACT  
FOR RG58, KX15 AND RG141 CABLES

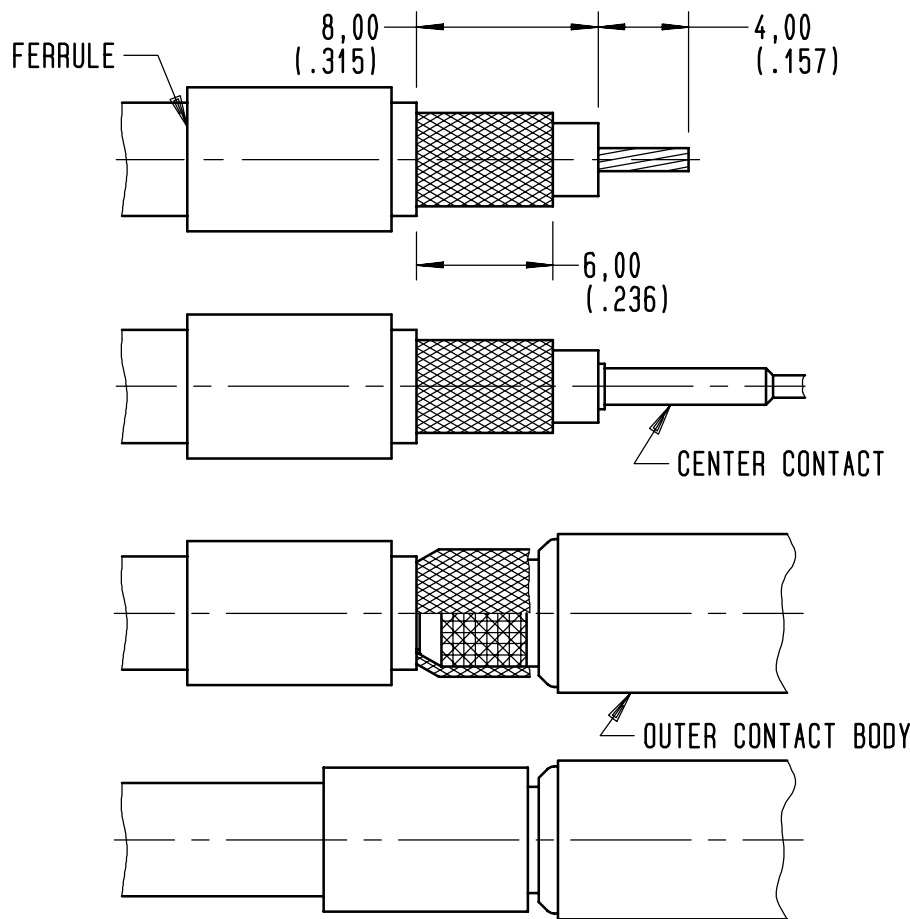
Issue:  
09 JUL 98

Page  
1 / 1



**MATERIAL:**  
 OUTER CONTACT: BRASS  
 INSULATOR: PTFE  
 CENTER CONTACT: BERYLLIUM COPPER  
 FERRULE: BRASS  
**FINISH (ALL METAL PARTS)**  
 GOLD PLATE PER MIL-G-45204: 50 MICROINCHES OVER NICKEL

**DESIGN REQUIREMENTS**  
 TEMPERATURE RANGE: -65°C TO +165°C  
 IMPEDANCE: 50 OHMS NOMINAL  
 RATED VOLTAGE: 325 V RMS AT SEA LEVEL  
 VSWR: 1.10:1 FREQUENCY RANGE : 0 - 300 MHZ  
 VSWR: 1.30:1 FREQUENCY RANGE : 300 - 500 MHZ  
 FREQUENCY RANGE: 0 - 500 MHZ  
 DIELECTRIC WITHSTANDING VOLTAGE: 750 VRMS AT SEA LEVEL



STRIP CABLE TO DIMENSIONS SHOWN ABOVE  
 SLIDE FERRULE OVER THE CABLE

SLIDE CENTER CONTACT BARREL OVER CABLE CONDUCTOR  
 CONTACT SHOULDER BUTTING AGAINST CABLE DIELECTRIC  
 CRIMP CENTER CONTACT  
 CRIMPING TOOL M22520/2-01 RADIALL 282281  
 SELECTOR ON: 8 FOR RG141  
 6 FOR RG58 AND KX15  
 POSITIONER: K345 RADIALL 282550

FLARE BRAID, INSERT CENTER CONTACT INTO THE OUTER  
 CONTACT BODY  
 PLACE BRAID OVER KNURLED PART OF OUTER CONTACT BODY

SLIDE FERRULE OVER BRAID UNTIL IT BUTTS AGAINST SHOULDER  
 OF OUTER CONTACT BODY  
 CRIMP FERRULE  
 CRIMPING TOOL: M22520/5-01 RADIALL 282293  
 DIE: M22520/5-05 RADIALL 282246 HEX.A 5,4 (.212) /FLATS  
 OR: M22520/5-45 RADIALL 282236 HEX.A 5,54 (.218) /FLATS

CREATION				
PEN: .				
NOM: JP MACARI	09 JUL 98	MODIFIED FURTHER TO TYPING ERROR MATERIAL FOR OUTER AND CENTER CONTACTS	VALGRESY	.
DATE: 17 JUN 82	22 NOV 96	REDRAWN	VALGRESY	BALDYROU
APPR.: CARTESSE	Issue	Revisions	Name	Approved

4112-9610