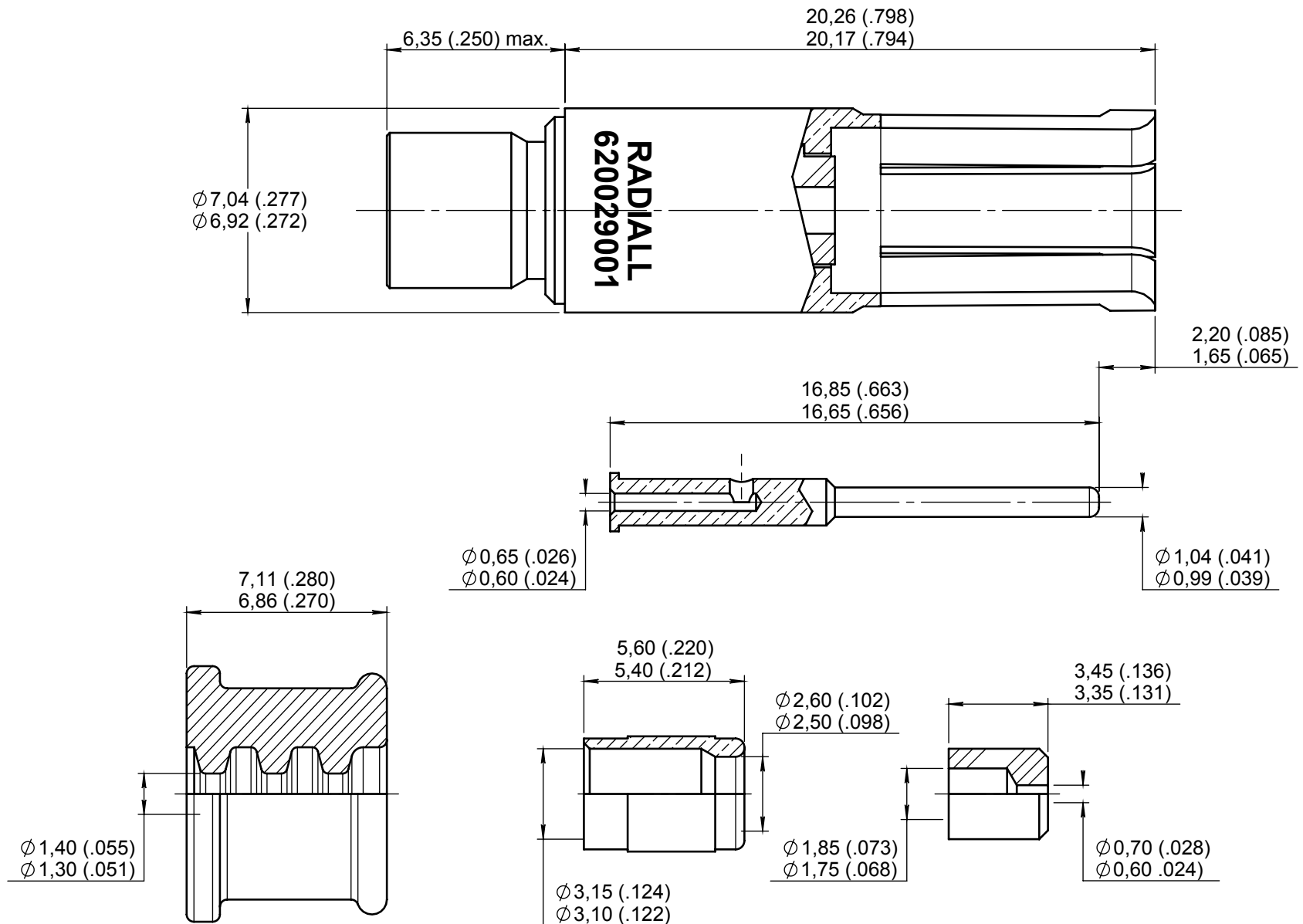


Series
NSX

ENVIRONMENTAL SIZE 5 COAX SOCKET CONTACT
FOR RD316 CABLE

Issue:
Oct. 30, 2018

Page
1/2



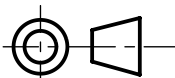
MATERIAL :

- OUTER CONTACT : BERYLLIUM COPPER PER ASTM B 196
- CENTER CONTACT AND FERRULE : BRASS PER ASTM B 16 OR ASTM B 453 OR EN 12164
- INSULATORS : PTFE PER ASTM D 1710 OR EQUIVALENT
- SEALING BOOT : FLUOROSILICONE PER SAE AMS-R-25988

FINISH :

- ALL METALIC PARTS : PLATING .00005 INCH OF GOLD PER MIL-DTL-45204 OVER NICKEL PER AMS 2403

DIMENSIONS : mm (inch are given for information only)



Estimated weight : 4 g

CREATION PEN: M980009365A NOM: Valgresy B. DATE: Oct. 26, 1998 APPR.: Jacob				
	Oct. 30, 18	Wiring intruction added	Ramos D.	Zuniga F.
	Nov. 25, 13	Modification: 20.30/20.15 => 20.26/20.17	Zuniga F.	Dupuis V.
	Aug. 22, 06	Redrawn	Legendre T.	Lahoreau C.
	Issue	Revisions	Name	Approved

620029001EN

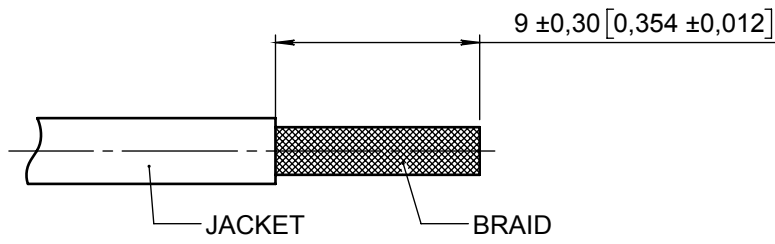
RADIALL PROPRIETARY INFORMATION

This document contains proprietary information and such information shall not be disclosed to any third party for any purpose whatsoever or used for manufacturing purposes without prior written agreement from RADIALL. This information is given as an indication. In the continual goal to improve our products, we reserve the right to make any modifications judged necessary.

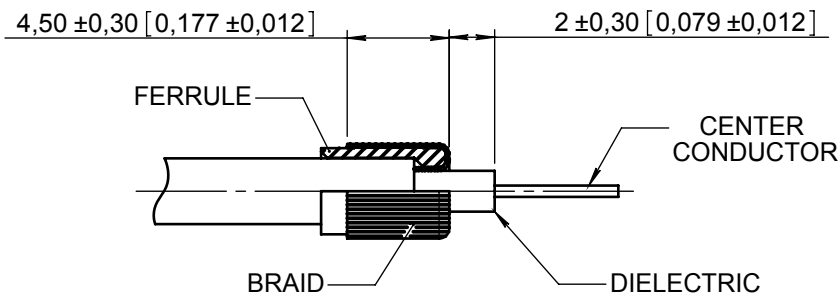
4112_9311

This document contains proprietary information and such information shall not be disclosed to any third party for any purpose whatsoever or used for manufacturing purposes without prior written agreement from RADIALL. This information is given as an indication. In the continual goal to improve our products, we reserve the right to make any modifications judged necessary.

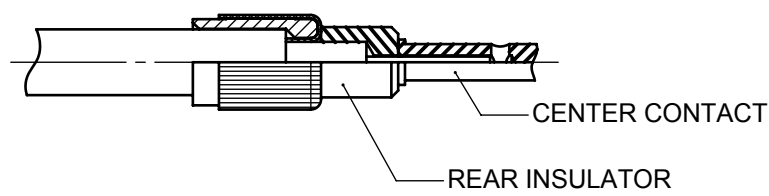
4112_9311



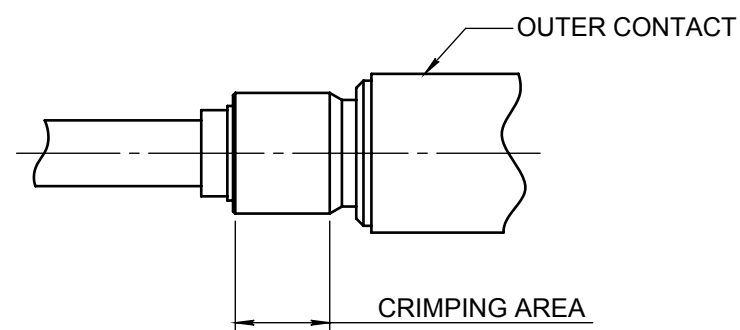
SLIDE THE SEALING BOOT OVER THE CABLE
STRIP THE BRAID AT DIMENSION SHOWN



SLIDE THE FERRULE OVER THE BRAID UNTIL IT
BUTTS AGAINST CABLE JACKET
FOLD BACK BRAID OVER FERRULE
CUT BRAIDS AT DIMENSION SHOWN
STRIP CENTER CONDUCTOR AT DIMENSION SHOWN



SLIDE REAR INSULATOR AND CENTER CONTACT
OVER CENTER CONDUCTOR
CRIMP CENTER CONTACT USING :
CRIMPING TOOL : M22520/2-01 (RADIAL 282281)
SELECTOR : 7
POSITIONNER : K345 (RADIAL 282550)



INTRODUCE CENTER CONTACT SUB ASSEMBLY
INTO OUTER CONTACT AND CRIMP USING :
CRIMPING TOOL : M22520/5-01 (RADIAL 282293)
DIE : M22520/5-05 (RADIAL 282246) HEX. B 4,50 (.177)
ON FLATS

EXTRACTION TOOL : M81969/28-01 (RADIAL 282946)