

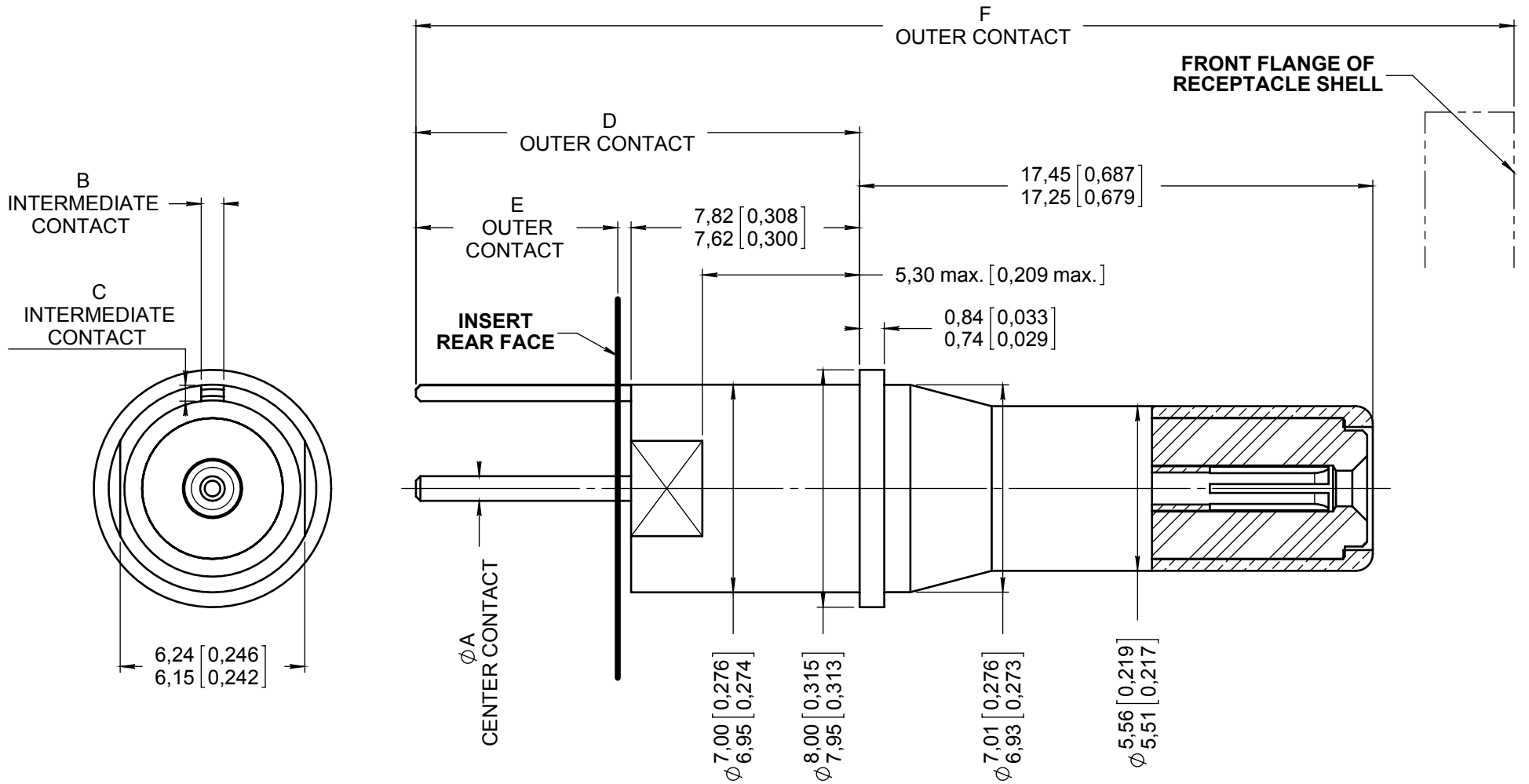
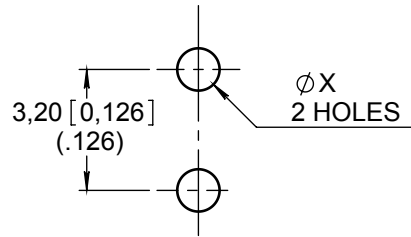
Series
BPX

SIZE 8 FRONT RELEASE, FRONT REMOVABLE
PC POST PIN COAX CONTACTS

Issue:
Feb. 21, 2017

Page
1/2

RECOMMENDED PC DRILL PATTERN



MATERIAL:

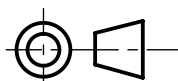
- OUTER CONTACT : BRASS PER ASTM B 16 OR ASTM B 453 OR EN 12164
- CENTER CONTACT : BERYLLIUM COPPER PEZR ASTM B 196
- DIELECTRIC : PTFE PER ASTM D 1710 OR EQUIVALENT

FINISH:

- ALL METAL PARTS : PLATING .00005 INCH OF GOLD PER SAE 2422 OVER NICKEL PER SAE AMS QQ N 290
- PWD SOLDER CONTACT AREA WHICH IS : - TIN LEADED PER QQ S 571
- ROHS TINNED

EXTRACTION TOOL: RADIALL P/N 282 549 009

DIMENSIONS : mm (inch are given for information only)



This document contains proprietary information and such information shall not be disclosed to any third party for any purpose whatsoever or used for manufacturing purposes without prior written agreement from RADIALL. This information is given as an indication. In the continual goal to improve our products, we reserve the right to make any modifications judged necessary.

4112_9311

CREATION				
PEN:				
NOM: MACARI JP.				
DATE: Dec. 06, 2007	Feb. 21, 17	Mistakes in table on page 2 (dimensions D, E and F)	Branjonneau	Legendre
APPR.: LEGENDRE T.	Dec. 16, 08	Added ROHS tinned contacts	Legendre	Brochet
	Issue	Revisions	Name	Approved

This document contains proprietary information and such information shall not be disclosed to any third party for any purpose whatsoever or used for manufacturing purposes without prior written agreement from RADIALL. This information is given as an indication. In the continual goal to improve our products, we reserve the right to make any modifications judged necessary.

	CTS P/N	CONTACT TERMINATION	ØA		B		C		
			BEFORE TINNING	AFTER TINNING	BEFORE TINNING	AFTER TINNING	BEFORE TINNING	AFTER TINNING	
NOT TINNED	619 140 009	YA		NA		NA		NA	
TIN LEADED	619 140 014	ZA		0,95 MAX (.037)		0,85 MAX (.033)		0,65 MAX (.026)	
ROHS TINNED	619 140 509	RA							
NOT TINNED	619 140 010	Y		NA		NA		NA	
TIN LEADED	619 140 013	Z		0,95 MAX (.037)		0,85 MAX (.033)		0,65 MAX (.026)	
ROHS TINNED	619 140 510	R	Ø0,84 (.033)		0,78 (.031)		0,56 (.022)		
NOT TINNED	619 140 007	YB	Ø0,78 (.031)	NA	0,74 (.029)	NA	0,42 (.016)	NA	
TIN LEADED	619 140 008	ZB		0,95 MAX (.037)		0,85 MAX (.033)		0,65 MAX (.026)	
ROHS TINNED	619 140 507	RB							
NOT TINNED	619 140 011	YC		NA		NA		NA	
TIN LEADED	619 140 012	ZC		0,95 MAX (.037)		0,85 MAX (.033)		0,65 MAX (.026)	
ROHS TINNED	619 140 511	RC							

	CTS P/N	CONTACT TERMINATION	D	E EXTENSION / INSERT REAR FACE		F EXTENSION / FRONT FLANGE OF SHELL		ØX	
				BEFORE TINNING	AFTER TINNING	BEFORE TINNING	AFTER TINNING		
NOT TINNED	619 140 009	YA		NA	4,60 (.181)	NA	35,20 (1.385)	Ø1,12 MIN (.044)	
TIN LEADED	619 140 014	ZA	12,40 (.488)	12,90 MAX (.508)	3,80 (.150)	5,10 MAX (.201)	33,80 (1.330)	35,70 MAX (1.405)	Ø1,22 MIN (.048)
ROHS TINNED	619 140 509	RA	12,20 (.480)						
NOT TINNED	619 140 010	Y		NA	7,20 (.283)	NA	37,80 (1.488)	Ø1,12 MIN (.044)	
TIN LEADED	619 140 013	Z	15,05 (.592)	15,55 MAX (.612)	6,40 (.252)	7,70 MAX (.303)	36,40 (1.433)	38,30 MAX (1.508)	Ø1,22 MIN (.048)
ROHS TINNED	619 140 510	R	14,85 (.584)						
NOT TINNED	619 140 007	YB		NA	10,30 (.406)	NA	41,00 (1.614)	Ø1,12 MIN (.044)	
TIN LEADED	619 140 008	ZB	18,15 (.715)	18,65 MAX (.735)	9,50 (.374)	10,80 MAX (.426)	39,60 (1.559)	41,50 MAX (1.634)	Ø1,22 MIN (.048)
ROHS TINNED	619 140 507	RB	17,95 (.706)						
NOT TINNED	619 140 011	YC		NA	13,60 (.535)	NA	44,20 (1.740)	Ø1,12 MIN (.044)	
TIN LEADED	619 140 012	ZC	21,45 (.844)	21,95 MAX (.864)	12,80 (.504)	14,10 MAX (.555)	42,80 (1.685)	44,70 MAX (1.760)	Ø1,22 MIN (.048)
ROHS TINNED	619 140 511	RC	21,25 (.836)						