



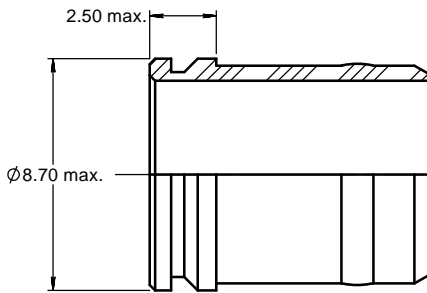
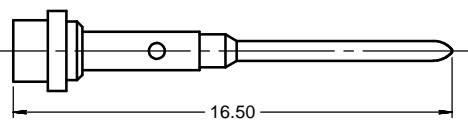
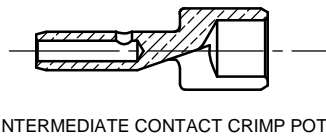
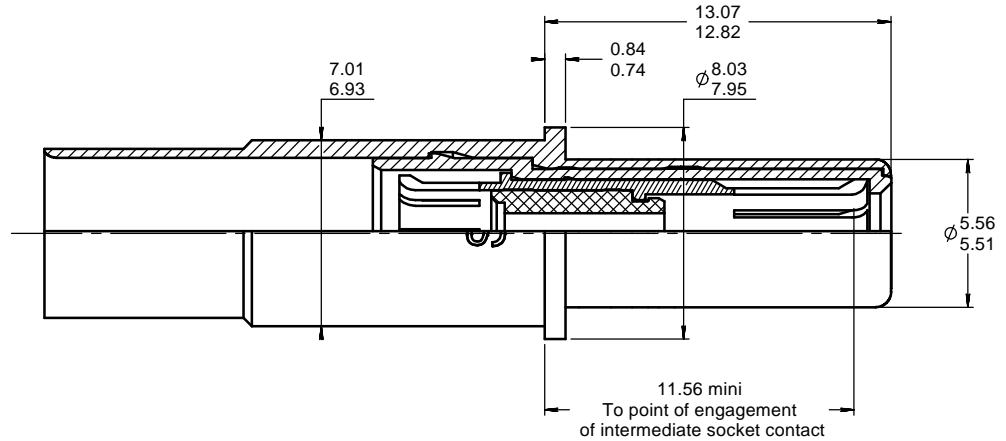
Series
MPX

Size 8 Concentric twinax pin contact

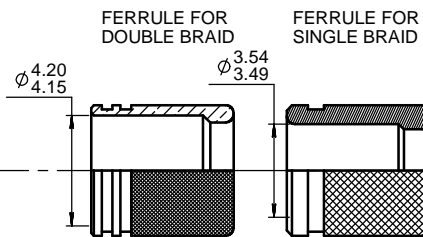
Issue:
june 21, 05

Page
1/1

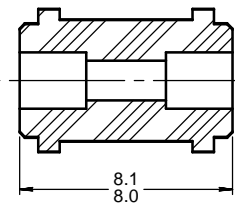
OUTER AND INTERMEDIATE CONTACT SUB-ASSEMBLY



ALIGNMENT BOOT



INNER FERRULE



DIELECTRIC SLEEVE

MATERIALS :

- OUTER CONTACT : BERYLLIUM COPPER ALLOY PER ASTM-B-196 - ANNEALED ON CRIMP BARREL
- INTERMEDIATE CONTACT : BERYLLIUM COPPER PER ASTM-B-196 HEAT TREATED
- CENTER CONTACT AND INTERMEDIATE CONTACT CRIMP POT : LEADED NICKEL COPPER (C97)
- INNER FERRULE : BRASS PER SAE AMS-QQ-B-626
- DIELECTRIC PARTS DIELECTRIC SLEEVE AND ALIGNMENT BOOT : PTFE PER ASTM-D-1710 OR EQUIVALENT

FINISHES (ALL METAL PARTS) :

- COLD PLATE PER MIL-G-45204, TYPE I OR II, GRADE C OR D, CLASS1, 50 MICROINCHES OVER NICKEL PLATE PER SAE AMS-QQ-N-290, CLASS 2

SEE WIRING INSTRUCTIONS : RP3364

DIMENSIONS : mm (inch) -



This information is given as an indication. In the continual goal to improve our products, we reserve the right to make any modifications judged necessary.

4112_9311

CREATION				
	PEN:			
	NOM: MARIE	august 2,13	Add identification of single and double BRAID	ZUNIGA F. DUJUIS V.
	DATE: Feb 13. 1991	june 21,05	Redrawn and rear insulator modified	LeGloahec
	APPR.: MACARI	July 19. 02	Modification alignment boot and delete flange	Couthon Macari
	Dec 11. 01	Modification diameter alignment boot	Couthon Macari	
	Issue	Revisions	Name	Approved