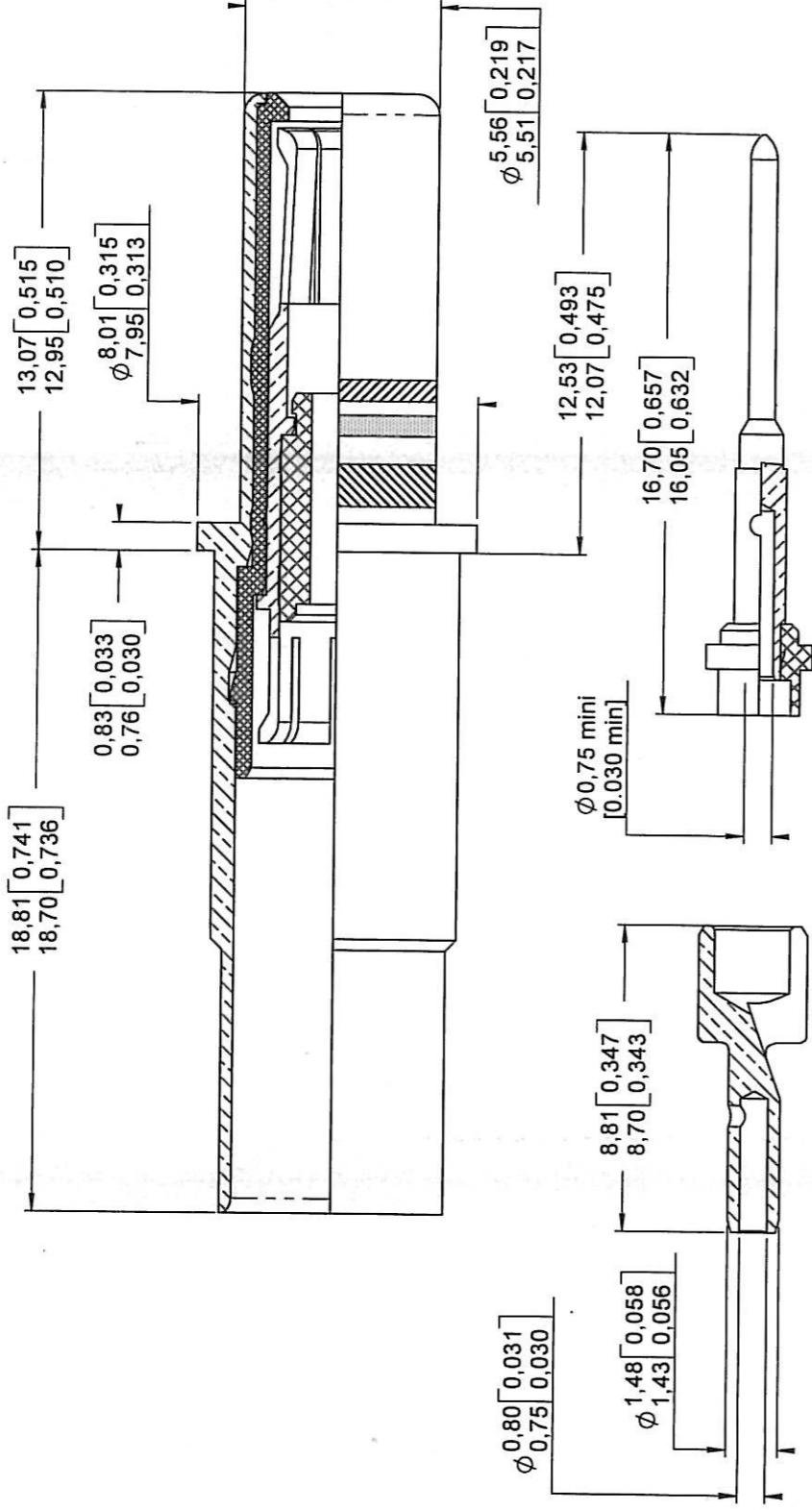
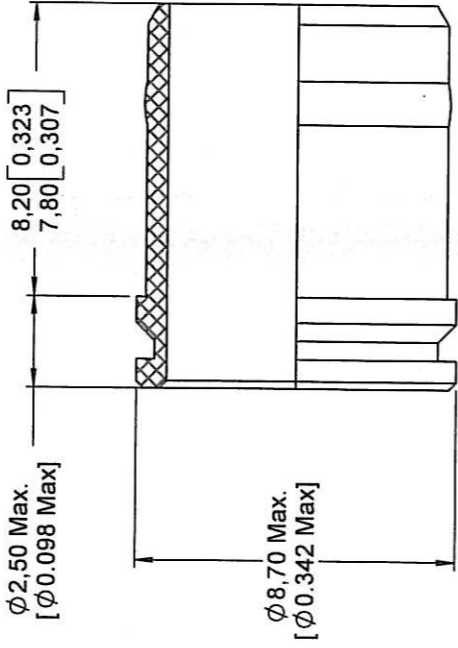


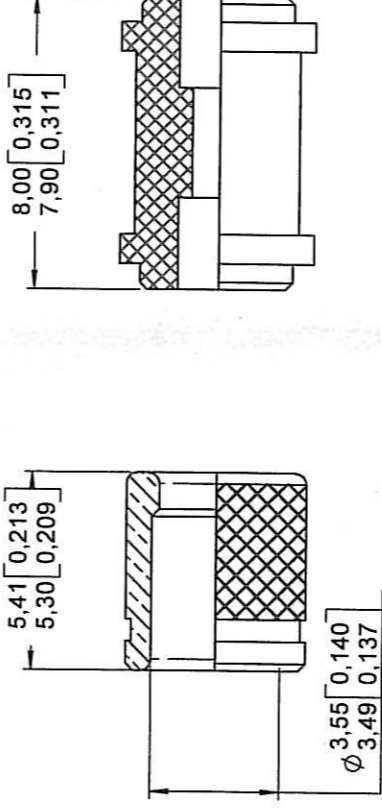
PIN BODY CONTACT WITH SOCKET INTERMEDIATE CONTACT SUBASSEMBLY



INTERMEDIATE CONTACT CRIMP POT



CENTER CONTACT SUB-ASSEMBLY



ALIGNMENT BOOT

**MATERIAL:**  
 OUTER CONTACT: BRASS PER QQ-B-626  
 INTERMEDIATE CONTACT: BERYLLIUM COPPER PER ASTM-B-196  
 CENTER CONTACT AND INTERMEDIATE CONTACT CRIMP POT: LEADED NICKEL COPPER (C97)  
 INNER FERRULE: BRASS PER QQ-B-626  
 DIELECTRIC PARTS DIELECTRIC SLEEVE AND ALIGNMENT BOOT: TPFE PER ASTM-D-1710 OR EQUIVALENT

**FINISH:**

ALL METAL PARTS: GOLD PER MIL-G-45204 TYPE I OR II, GRADE C OR D, CLASS 1 OVER NICKEL PER QQ-N-290  
 WIRING INSTRUCTION SEE RP 3364  
 EXTRACTION TOOL: M81969/28-03 (RADIALL 282 549 001)

INNER FERRULE

DIELECTRIC SLEEVE



DIMENSIONS : mm (inch are given for information only)

CREATION

PEN:

NOM: MARIE

DATE: SEP 07 1987

APPR.:

VALGRESY  
 COUTHON - MACARI

Issue Revisions

618161EN

RADIALL PROPRIETARY INFORMATION