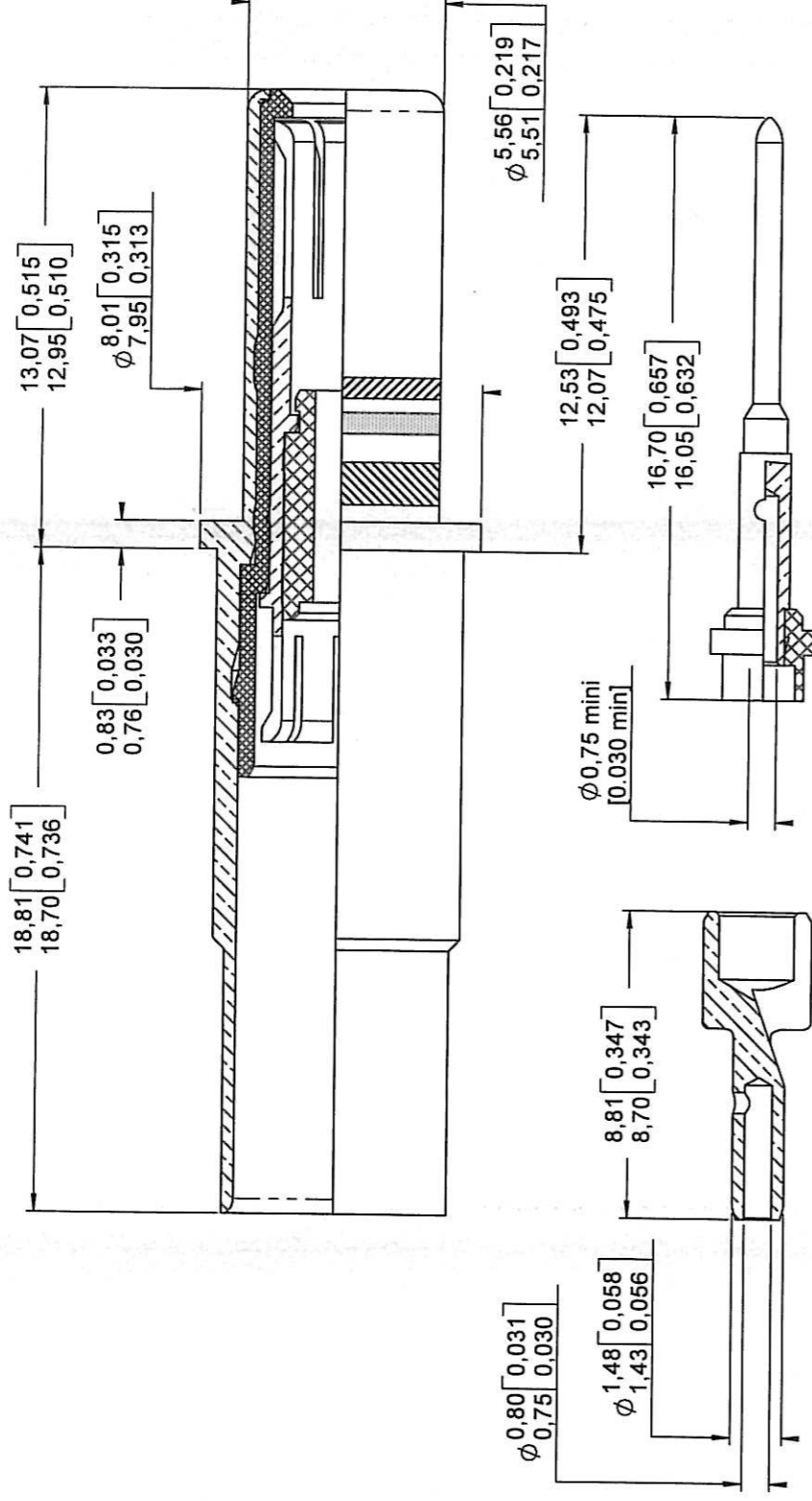
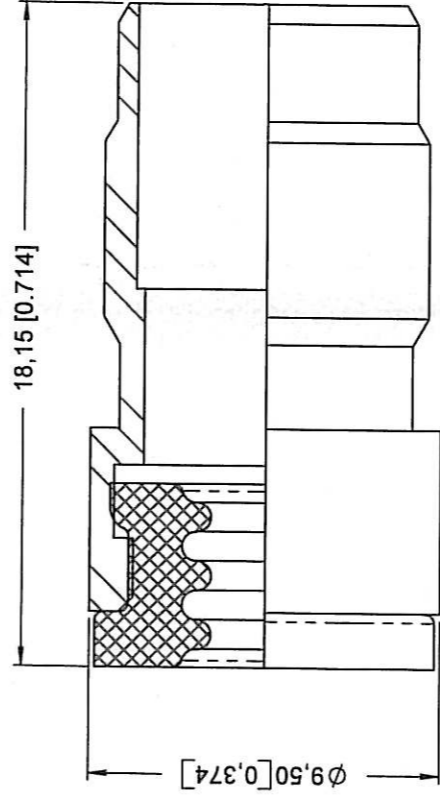


PIN BODY CONTACT WITH SOCKET INTERMEDIATE CONTACT SUBASSEMBLY

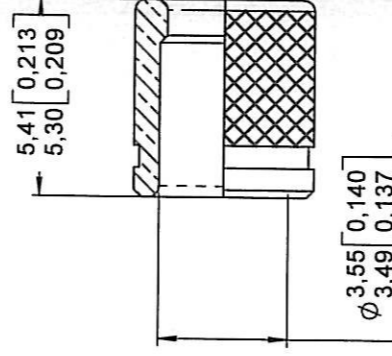


INTERMEDIATE CONTACT CRIMP POT

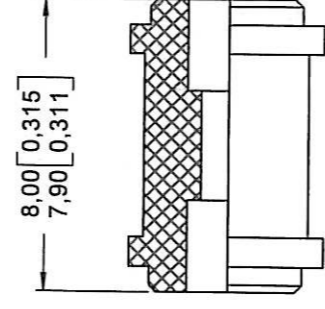
CENTER CONTACT SUB-ASSEMBLY



SEALING BOOT



INNER FERRULE



DIELECTRIC SLEEVE

MATERIAL:
 OUTER CONTACT: BRASS PER QQ-B-626
 INTERMEDIATE CONTACT: BERYLLIUM COPPER PER ASTM-B-196
 CENTER CONTACT AND INTERMEDIATE CONTACT CRIMP POT: LEADED NICKEL COPPER (C97)
 INNER FERRULE: BRASS PER QQ-B-626
 DIELECTRIC PARTS DIELECTRIC SLEEVE: TPFE PER ASTM-D-1710 OR EQUIVALENT
 SEALING BOOT: THERMOPLASTIC PER MIL-P-46184 AND FLUOROSILICONE PER MIL-R-25988 OR ZZ-R-765

FINISH:
 ALL METAL PARTS: GOLD PER MIL-G-45204 TYPE I OR II, GRADE C OR D, CLASS 1 OVER NICKEL PER QQ-N-290

WIRING INSTRUCTION SEE RP 3364

EXTRACTION TOOL: M81969/28-03 (RADIALL 282 549 001)



DIMENSIONS : mm (inch are given for information only)

CREATION

PEN:

NOM: /

DATE: DEC 08 1988

APPR.:

Issue	Revisions	Name	Approved
AUG 28 08	REDRAWN - MODIFIED NEW CONCEPTION	VALGRESY	
OCT 24 02	10.20/9.80 BECOME 7.80/8.20	COUTHON	

618161001EN

RADIALL PROPRIETARY INFORMATION