

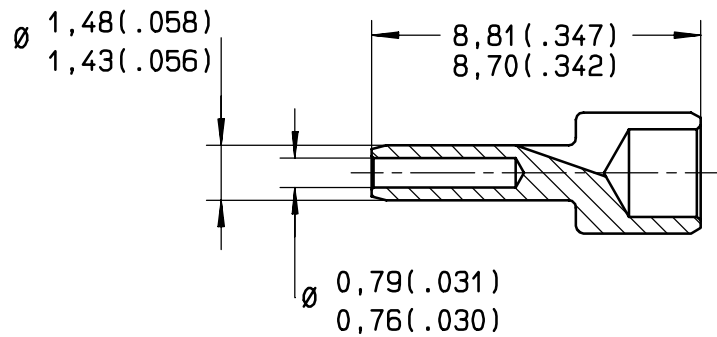
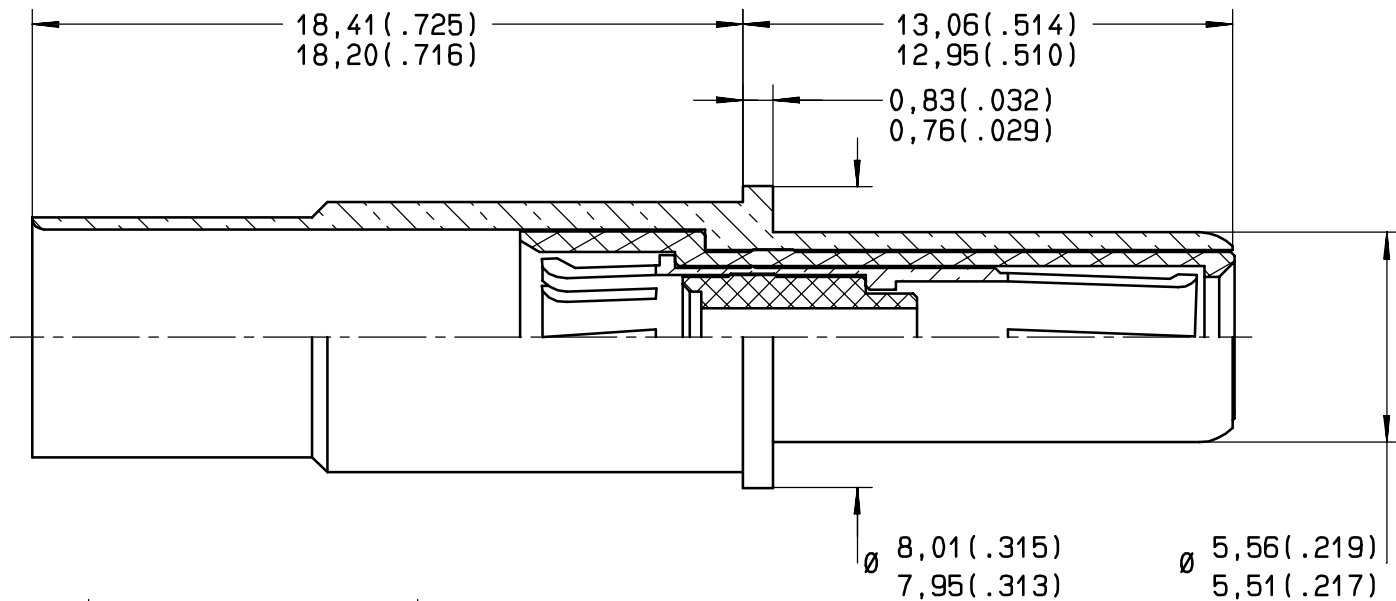


Series  
MPX

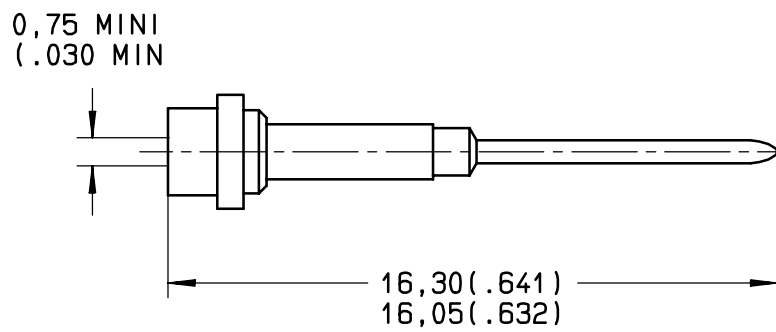
SIZE 8 CONCENTRIC TWINAX PIN CONTACT  
FOR EN 3375-004 CABLE AND EN 3375-005 CABLE

Issue: 24 OCTOBRE 2002  
Page 1 / 1

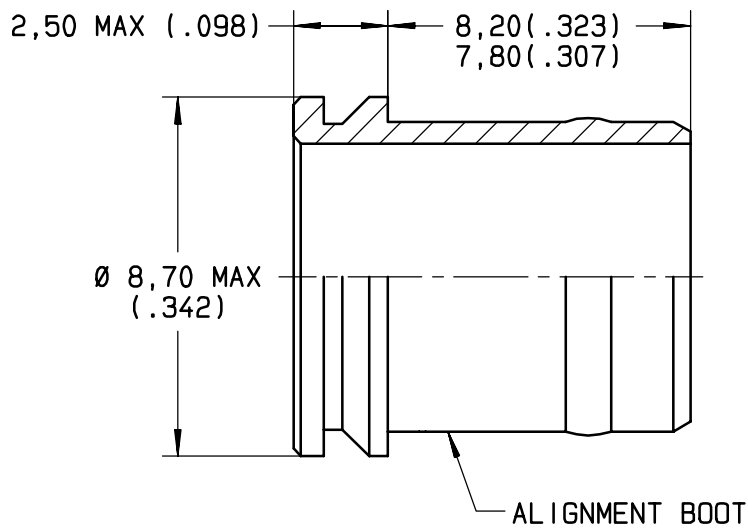
OUTER AND INTERMEDIATE CONTACT SUB-ASSEMBLY



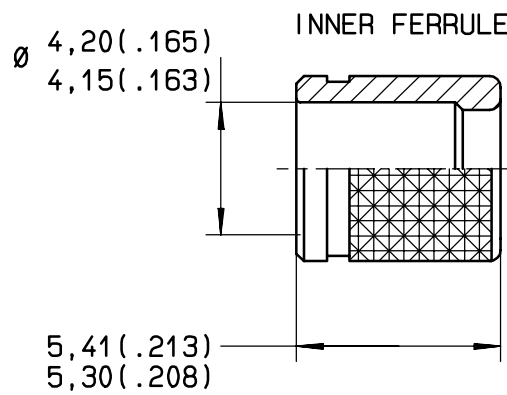
INTERMEDIATE CONTACT  
CRIMP POT



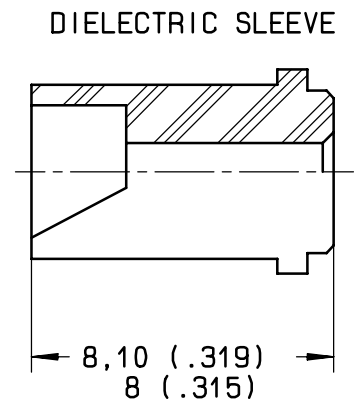
CENTER CONTACT SUB-ASSEMBLY



ALIGNMENT BOOT



INNER FERRULE



DIELECTRIC SLEEVE

MATERIALS:

OUTER CONTACT: BERYLLIUM COPPER ALLOY PER ASTM-B-196 -ANNEALED ON CRIMP BARREL  
 INTERMEDIATE CONTACT: BERYLLIUM COPPER ALLOY PER ASTM-B-196 HEAT TREATED  
 CENTER CONTACT AND INTERMEDIATE CONTACT CRIMP POT : LEADED NICKEL COPPER (C97)  
 INNER FERRULE: BRASS PER QQ-B-626  
 DIELECTRIC PARTS DIELECTRIC SLEEVE AND ALIGNMENT BOOT: TPFE PER ASTM-D-1710 OR EQUIVALENT

FINISHES (ALL METAL PARTS)

GOLD PLATE PER MIL-G-45204, TYPE I OR II, GRADE C OR D, CLASS 1 50 MICROINCHES OVER NICKEL PLATE PER QQ-N-290, CLASS 2

SEE WIRING INSTRUCTIONS: RP3364

This information is given as an indication. In the continual goal to improve our products, we reserve the right to make any modifications judged necessary.

4112-9610

CREATION	Issue	Revisions	Name	Approved
PEN: /	24 OCT 02	10,20/9.80 BECOME 8.20/7.8	COUTHON	MACARI
NOM: MARIE	19-07-02	MODIF MANCHON SUPPRESSION COLLERETTE	COUTHON	MACARI
DATE: 07 SEP 1987	11 DEC 01	MODIFICATION DIAMETER ALIGNMENT BOOT	COUTHON	MACARI
APPR.: .	05 JUNE 01	CABLE MIL C 17/17600002 WAS MIL C 17/176000002	MACARI	GOMBERT
	12 MAR 01	REDRAWN	VALGRESY	MACARI

**RADIALL**<sup>®</sup>

101, rue Philibert Hoffmann Z.I. Ouest  
 93116 ROSNY/BOIS Cedex (France)  
 Tl.: 01 49 35 35 35  
 Fax.: 01 48 54 63 63  
 Tlax: RADIA 235220