

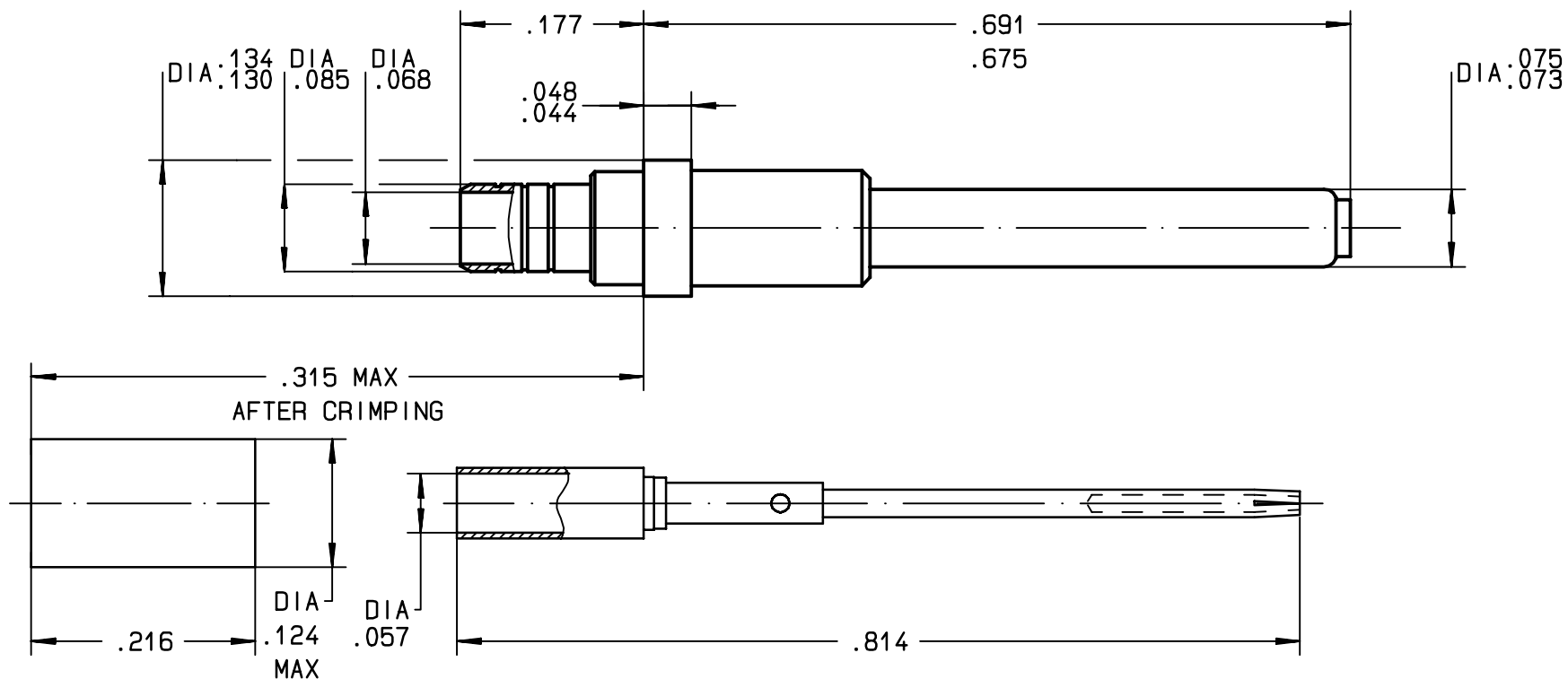


Series
MPX

SIZE 16 COAXIAL SOCKET CONTACT CABLE
- ANXON P81-38-59 ET P82-28-17 - FILECA 1703/134 - ASNE 0690 WL

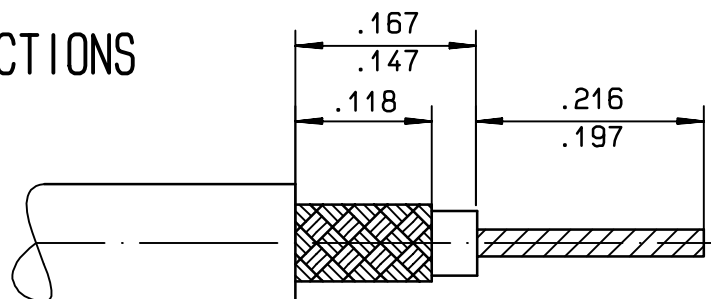
Issue:
12 AOUT 98

Page
1 / 1



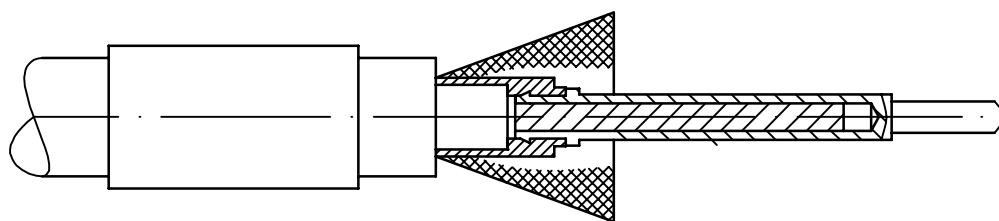
WIRING INSTRUCTIONS

1 - STRIP THE CABLE AS SHOWN

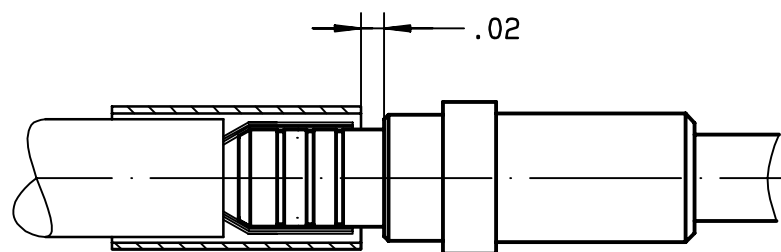


- 2 - SLIDE FERRULE OVER SHEATH
- FOLD BACK THE FIRST BRAID ON CABLE JACKET
- CUT HIGH IMMUNITY RIBB ON .118 STRIP OFF LENGHT
- FLARE SECOND BRAID
- SLIDE CABLE IN CENTRAL CONTACT DIELECTRIC AGAINT THE SLEEVE

- CRIMP CENTRAL CONTACT
- TOOL M22520/2-01 (RADIALL 282 281)
- SELECTOR SET 2
- POSITIONNER (DANIELS K 370) (RADIALL 282 555)



- 3 - PUSH CABLE ASSEMBLY IN TO BODY CONTACT
- FOLD BRAID OVER BARREL
- SLIDE FERRULE TO .020 OF SHOULDER BARREL
- CRIMP THE FERRULE A FIRST TIME
- TURN THE CONTACT OF ABOUT 45°
- CRIMP THE FERRULE A SECONDE TIME
- TOOL M 22520/4-01 (RADIALL 282292)
- POSITIONNER (RADIALL 282556)
- REMOVABLE TOOL (RADIALL 282892)



This information is given as an indication. In the continual goal to improve our products, we reserve the right to make any modifications judged necessary.

4112_9311

CREATION				
PEN: 89066				
NOM: FALETTI				
DATE: 12 SEPT 90	08-12-98	ADDED ASNE + REDRAWN IN CAO	D.FERRER	
APPR.: .	Issue	Revisions	Name	Approved