

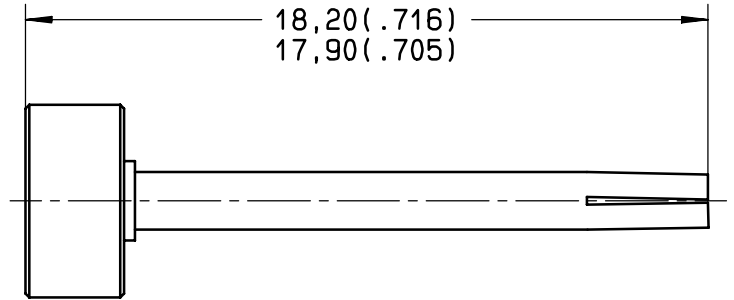
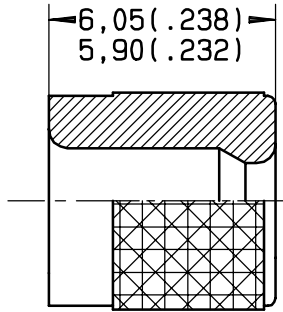
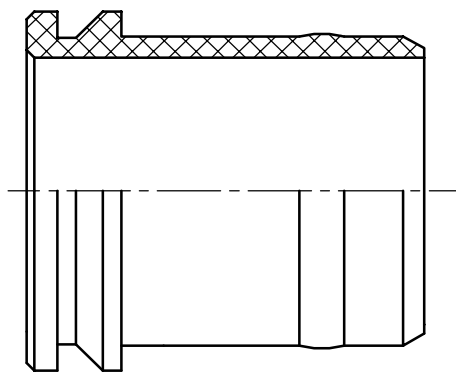
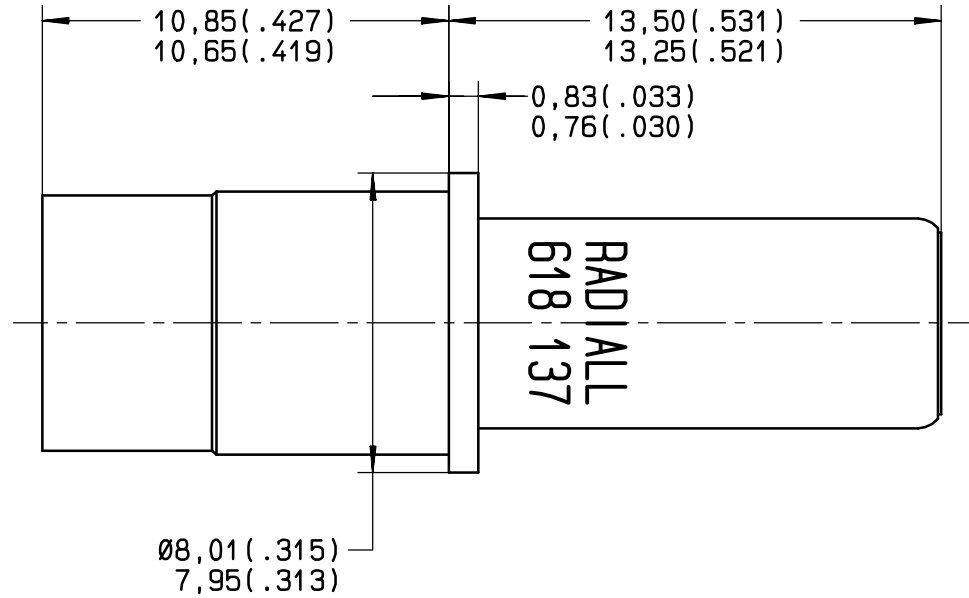


Series
MPX

SIZE 8 CRIMP PIN CONTACT
FOR RAYCHEM CABLE P/N: CLHF-316

Issue:
19 JUILLET 2002

Page
1 / 2



MATERIAL:
 BODY: BRASS PER QQ-B-726
 CENTER CONTACT: BERYLLIUM COPPER PER ASTM-B-196
 FERRULE: BRASS PER QQ-B-726
 INSULATOR AND ALIGNMENT BOOT: PTFE PER ASTM-D-1710 OR EQUIVALENT

FINISH:
 BODY, CENTER CONTACT AND FERRULE: GOLD PER MIL-G-45204 TYPE I OR II, GRADE C OR D,
 CLASS 1 OVER NICKEL PER QQ-N-290
 PROTECTIVE SLEEVE: PASSIVATED PER QQ-P-35

EXTRACTION TOOL: M81969/28-03 (RADIALL 282 549 001)

This information is given as an indication. In the continual goal to improve our products, we reserve the right to make any modifications judged necessary.

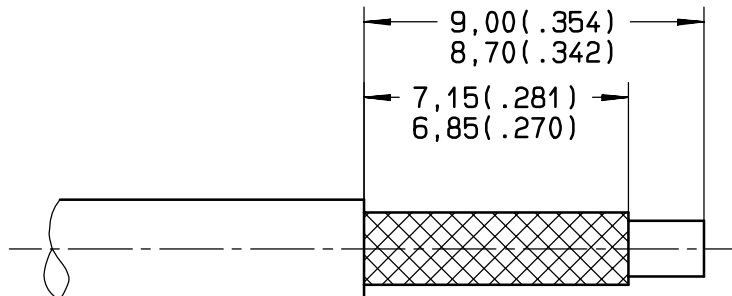
4112-9610

CREATION
PEN: M010106260C
NOM: MACARI
DATE: 19 FEB.02
APPR.: COUTHON	19-07-02	MODIF MANCHON SUPPRESSION COLLERETTE	COUTHON	MACARI
	Issue	Revisions	Name	Approved

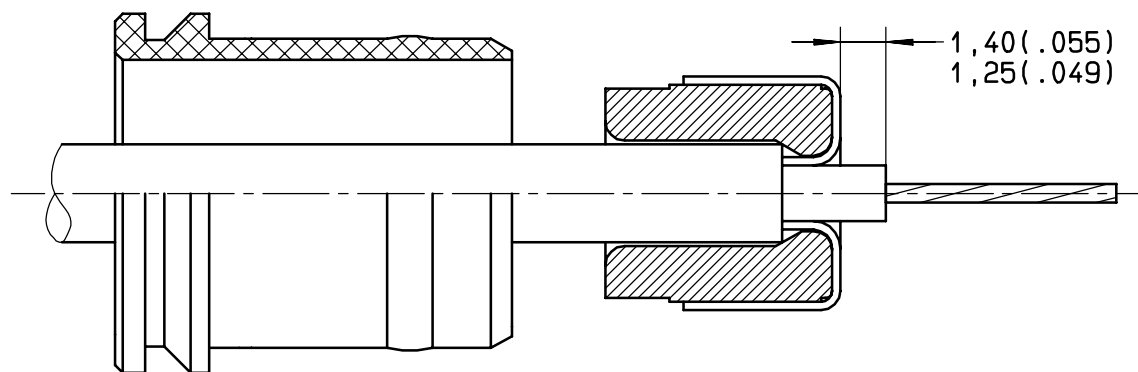


WIRING INSTRUCTIONS

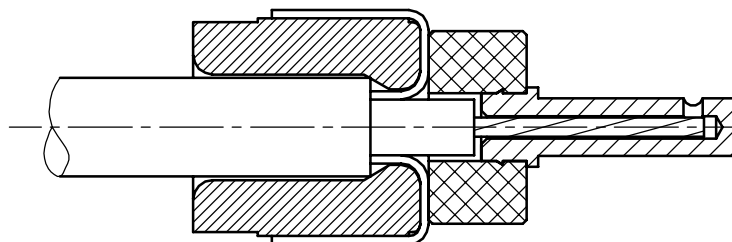
STEP 1:
STRIP CABLE TO DIMENSIONS SHOWN



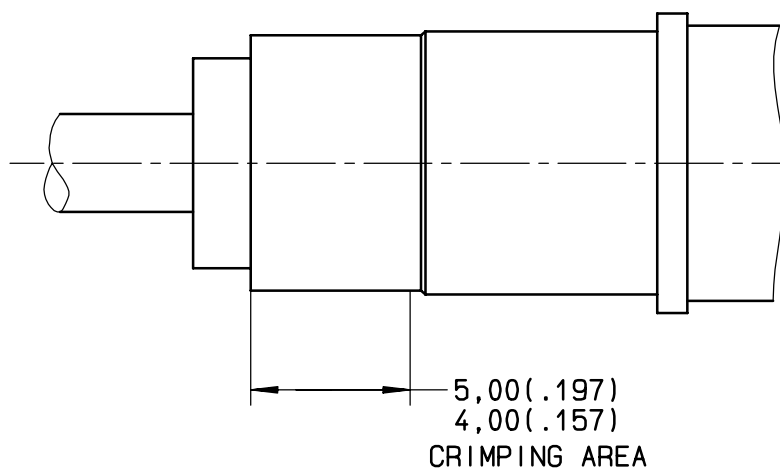
STEP 2:
SLIDE ALIGNMENT BOOT OVER THE CABLE
SLIDE FERRULE OVER THE BRAID
FOLD BACK BRAID AND STRIP INNER CONDUCTOR TO DIMENSION SHOWN



STEP 3:
INTRODUCE INNER CONDUCTOR INTO CENTER CONTACT SUB-ASSEMBLY
CRIMP CENTER CONTACT
CRIMPING TOOL: M22520/2-01 (RADIAL 282281)
SELECTOR ON: 4
POSITIONER: RADIAL 282 572



STEP 3:
INTRODUCE THIS SUB-ASSEMBLY INTO OUTER CONTACT AND PUSH THE FERRULE UNTIL BUTTING
CRIMP OUTER CONTACT
CRIMPING TOOL: M22520/5-01 (RADIAL 282293)
DIE: M22520/5-45 (RADIAL 282236)
HEX: A 5,90 (.232) ON FLATS



This information is given as an indication. In the continual goal to improve our products, we reserve the right to make any modifications judged necessary.
4113_9306