

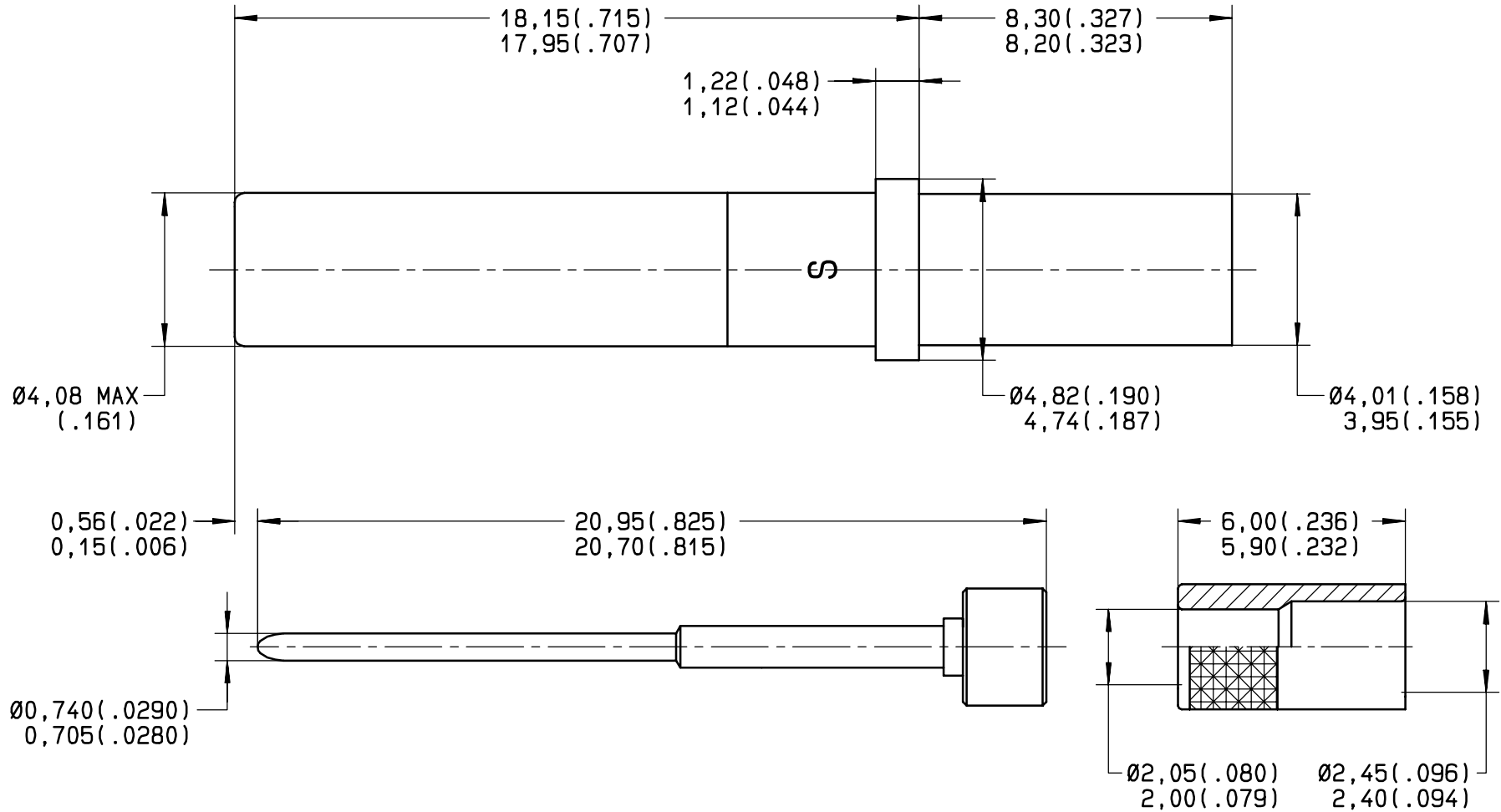


Series
MPX

SIZE 12 COAXIAL SOCKET CONTACT
FOR ASNE 0690WL CABLE

Issue:
21 JUNE 00

Page
1 / 2



MATERIAL :

- OUTER CONTACT: BERYLLIUM COPPER PER ASTM-B-196
- CENTER CONTACT: LEADED NICKEL COPPER (C97)
- INSULATORS: PTFE PER ASTM-D-1710 OR EQUIVALENT
- PROTECTIVE SLEEVE: STAINLESS STEEL MPER AISI 305
- FERRULE: BRASS PER QQ-B-626

FINISH:

- OUTER, CENTER CONTACT AND FERRULE: GOLD PER MIL-G-45204, TYPE I OR II, GRADE C OR D, CLASS 1 OVER NICKEL PER QQ-N-290
- PROTECTIVE SLEEVE: PASSIVATED

(DIMENSIONS IN BRACKETS ARE IN INCHES)

CREATION
PEN: M000104318A
NOM: MACARI
DATE: 27 MARCH 00
APPR.: DUPUIS	21 JUN.00	ADD P/N CRIMPING TOOL'SELECTOR	HASCOET	.
	Issue	Revisions	Name	Approved

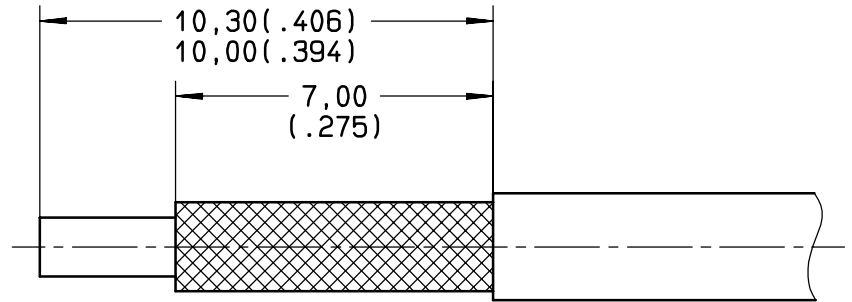
This information is given as an indication. In the continual goal to improve our products, we reserve the right to make any modifications judged necessary.

4112-9610

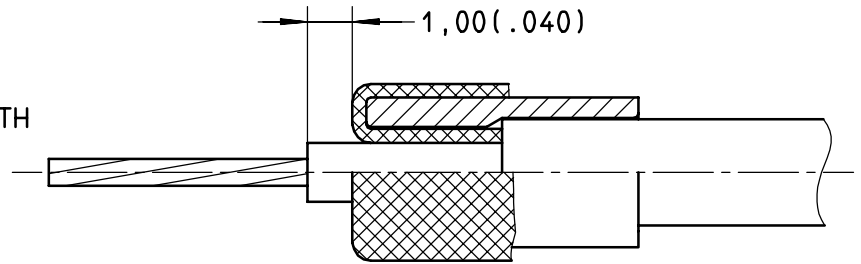


WIRING INSTRUCTIONS

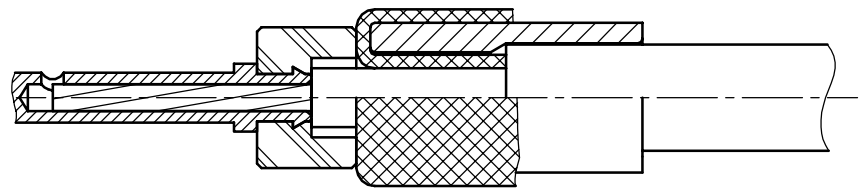
- STEP 1:
- STRIP THE CABLE AT DIMENSIONS SHOWN



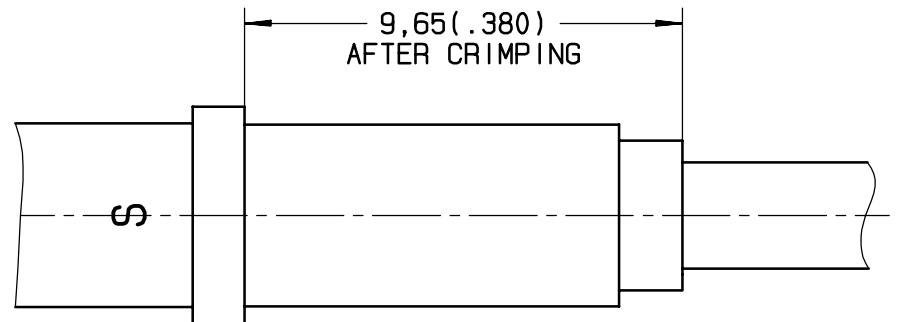
- STEP 2:
- SLIDE FERRULE OVER VBRAID UNTIL IT BUTTS AGAINST SHEATH
- COMB AND FOLD BRAID OVER FERRULE
- STRIP DIELECTRIC



- STEP 3:
- INSERT INNER CONDUCTOR INTO CENTER CONTACT SUB-ASSY
- CRIMP CENTER CONTACT:
CRIMPING TOOL: M22520/2-01 SELECTOR ON: 3
POSITIONER: RADIAL 282 580



- STEP 1:
- PUSH CABLE ASSEMBLY INTO OUTER CONTACT
- CRIMP OUTER CONTACT:
CRIMPING TOOL: M22520/31-01 (DANIELS GS200)
POSITIONER: RADIAL 282 581



This information is given as an indication. In the continual goal to improve our products, we reserve the right to make any modifications judged necessary.