

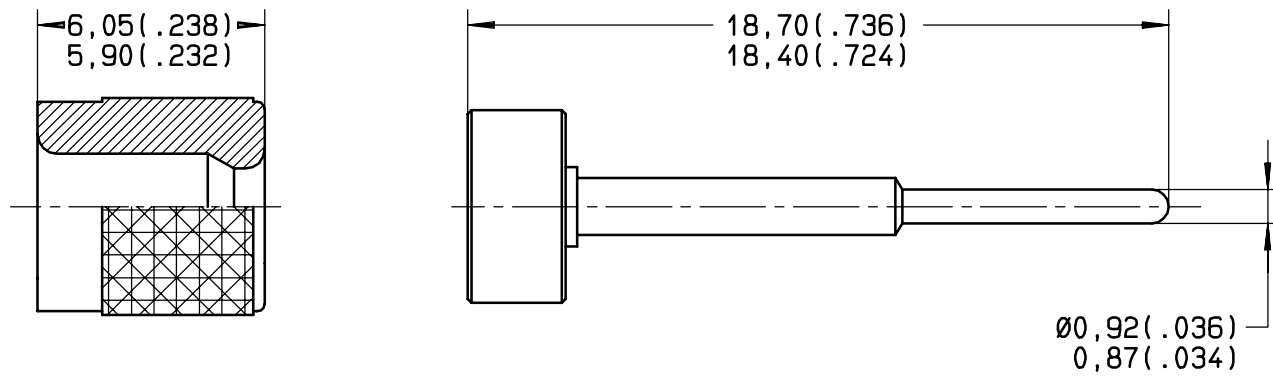
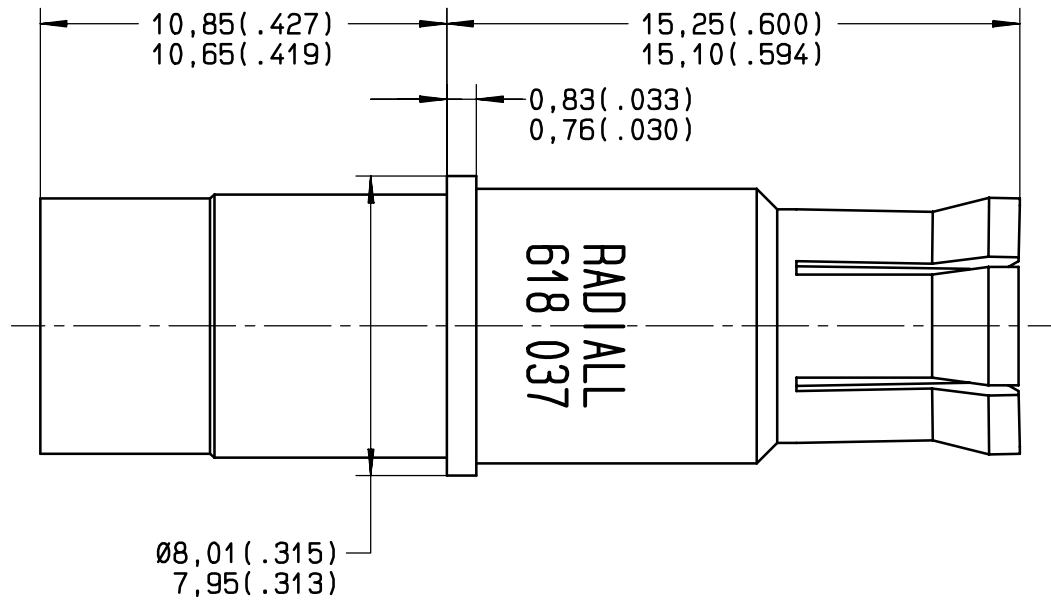


Series
MPX

SIZE 8 CRIMP SOCKET CONTACT
FOR RAYCHEM CABLE P/N: CLHF-316

Issue:
19 FEB.02

Page
1 / 2



MATERIAL:
 BODY: BERYLLIUM COPPER PER ASTM-B-196
 CENTER CONTACT: BRASS PER QQ-B-726
 FERRULE: BRASS PER QQ-B-726
 INSULATOR: PTFE PER ASTM-D-1710 OR EQUIVALENT

FINISH:
 BODY, CENTER CONTACT AND FERRULE: GOLD PER MIL-G-45204 TYPE I OR II, GRADE C OR D,
 CLASS 1 OVER NICKEL PER QQ-N-290
 PROTECTIVE SLEEVE: PASSIVATED PER QQ-P-35

EXTRACTION TOOL: M81969/28-03 (RADIALL 282 549 001)

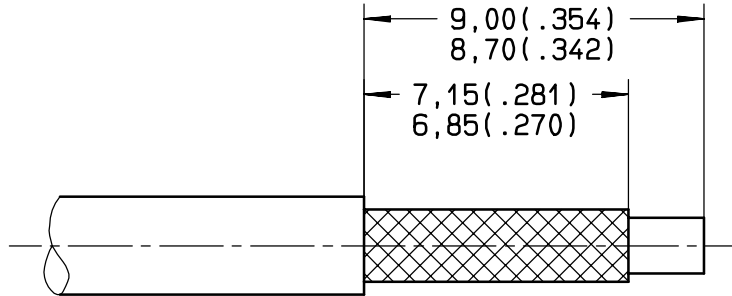
This information is given as an indication. In the continual goal to improve our products, we reserve the right to make any modifications judged necessary.

CREATION
PEN: M010106260C
NOM: MACARI
DATE: 19 FEB.02
APPR.: COUTHON
Issue	Revisions		Name	Approved

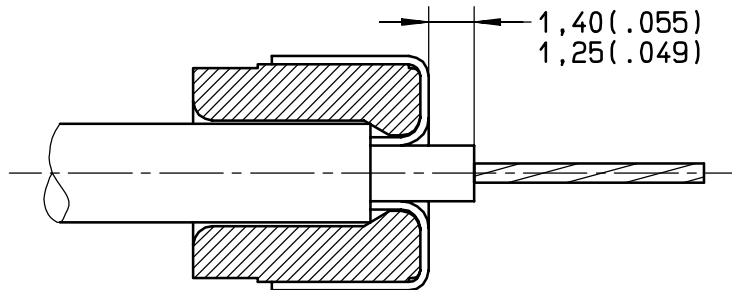


WIRING INSTRUCTIONS

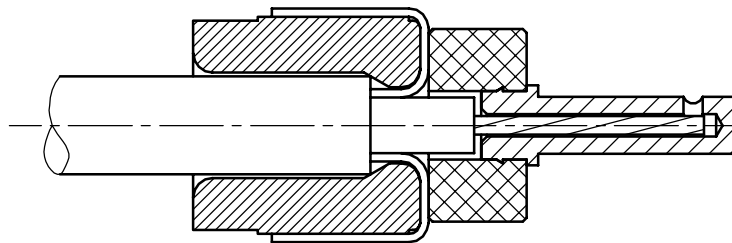
STEP 1:
STRIP CABLE TO DIMENSIONS SHOWN



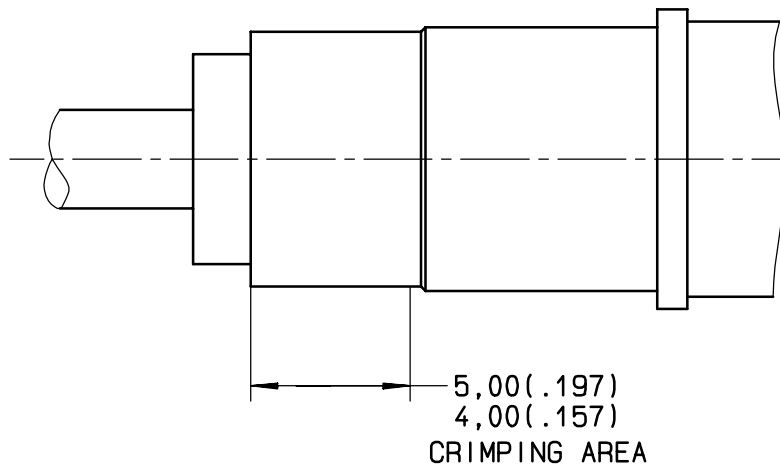
STEP 2:
SLIDE FERRULE OVER THE BRAID
FOLD BACK BRAID AND STRIP INNER CONDUCTOR TO DIMENSION SHOWN



STEP 3:
INTRODUCE INNER CONDUCTOR INTO CENTER CONTACT SUB-ASSEMBLY
CRIMP CENTER CONTACT
CRIMPING TOOL: M22520/2-01 (RADIAL 282281)
SELECTOR ON: 4
POSITIONER: RADIAL 282 572



STEP 3:
INTRODUCE THIS SUB-ASSEMBLY INTO OUTER CONTACT AND PUSH THE FERRULE UNTIL BUTTING
CRIMP OUTER CONTACT
CRIMPING TOOL: M22520/5-01 (RADIAL 282293)
DIE: M22520/5-45 (RADIAL 282236)
HEX: A 5,90 (.232) ON FLATS



This information is given as an indication. In the continual goal to improve our products, we reserve the right to make any modifications judged necessary.