

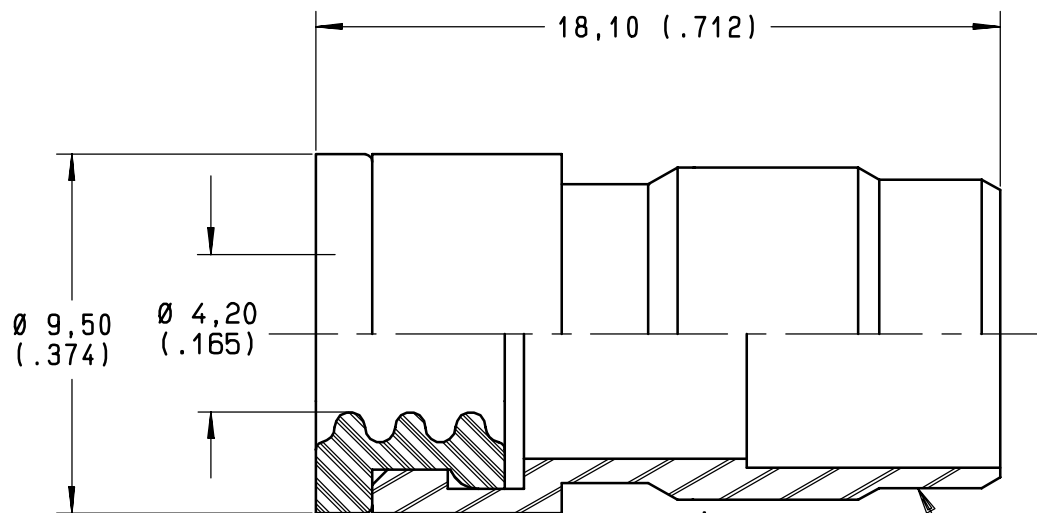
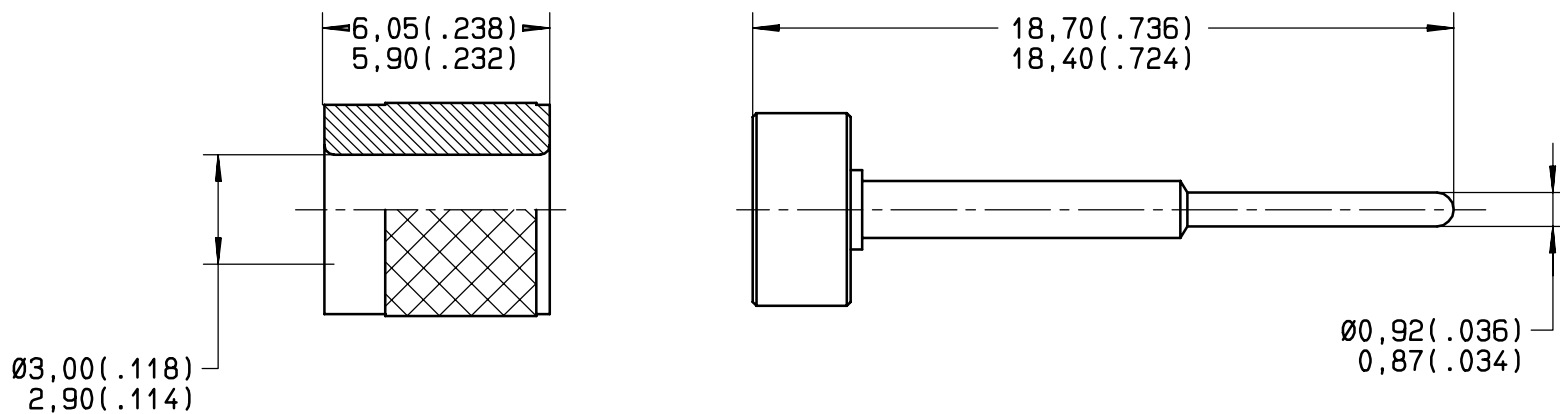
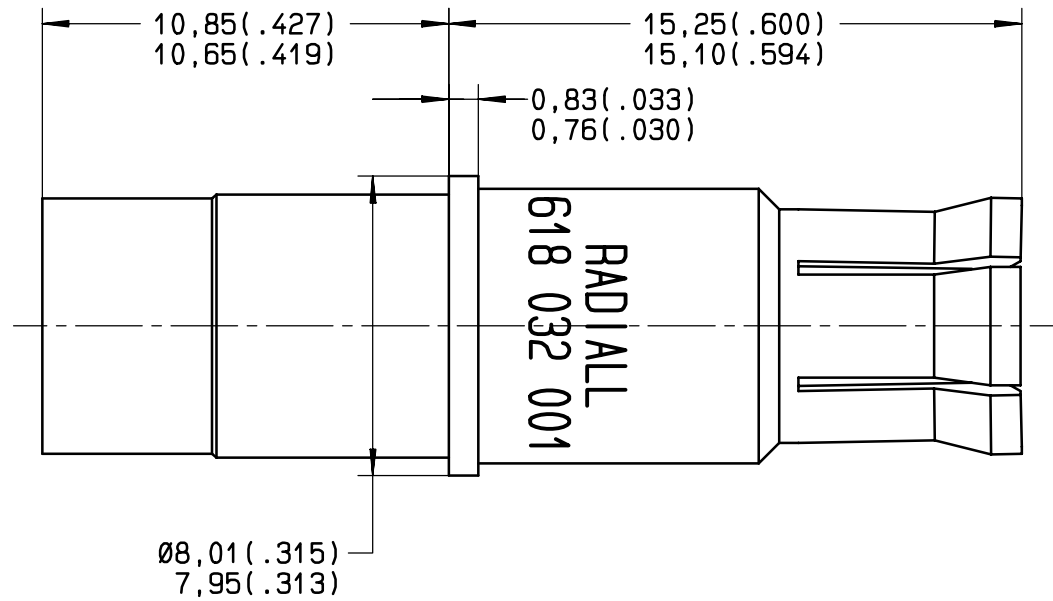


Series
MPX

SIZE 8 CRIMP SOCKET CONTACT ENVIRONMENTAL
FOR KX22 - RG316/U - RG174/U CABLES

Issue:
04 SEP 2002

Page
1 / 1



MATERIAL:
 BODY: BERYLLIUM COPPER PER ASTM-B-196
 CENTER CONTACT: BRASS PER QQ-B-726
 FERRULE: BRASS PER QQ-B-726
 INSULATOR: PTFE PER ASTM-D-1710 OR EQUIVALENT
 SEAL: FLUOROSILICONE ELASTOMER

FINISH:
 BODY, CENTER CONTACT AND FERRULE: GOLD PER MIL-G-45204 TYPE I OR II, GRADE C OR D,
 CLASS 1 OVER NICKEL PER QQ-N-290
 PROTECTIVE SLEEVE: PASSIVATED PER QQ-P-35

EXTRACTION TOOL: M81969/28-03 (RADIALL 282 549 001)

SEE WIRING INSTRUCTIONS RP 6523

This information is given as an indication. In the continual goal to improve our products, we reserve the right to make any modifications judged necessary.

4112-9610

CREATION
PEN: 89073
NOM: FALETTI
DATE: 22 FEB 2002
APPR.: BALDYROU	04 SEP 02	REDRAWN	VALGRESY	GOMBERT
	Issue	Revisions	Name	Approved