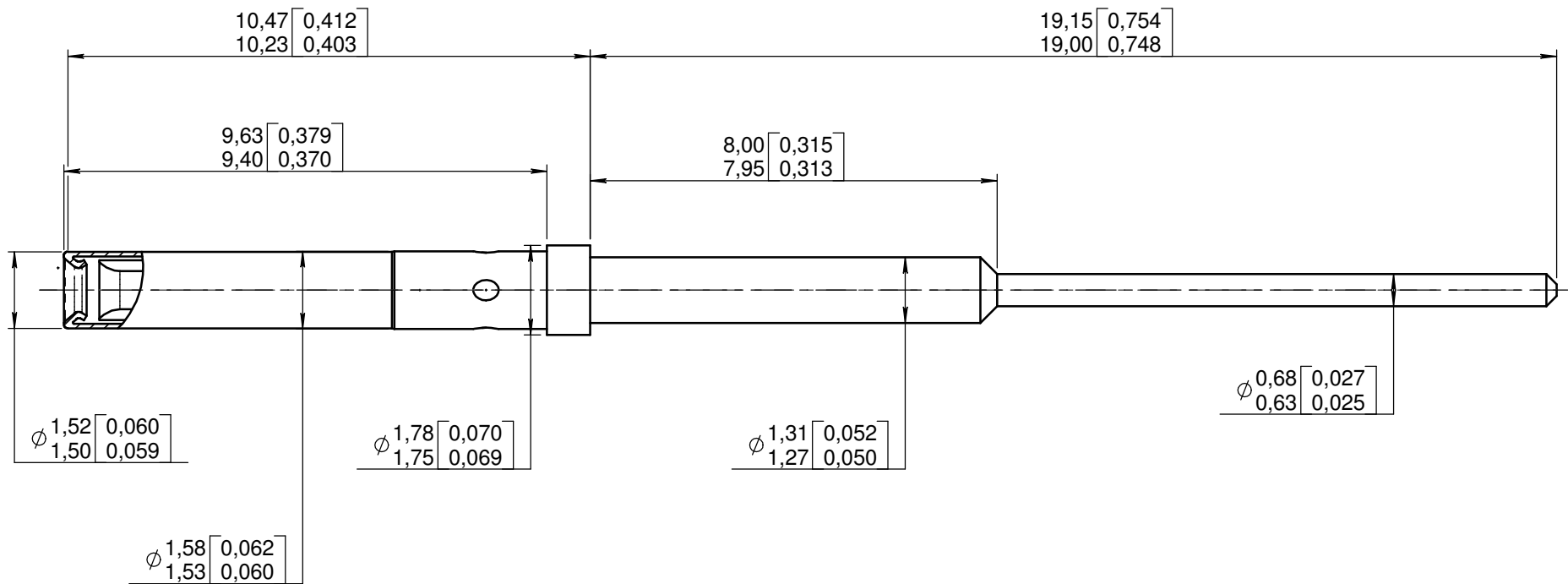


Series  
EPXB

Size 22 pc tail socket contact  
Rear release, rear removable

Issue:  
Aug 24, 2005

Page  
1/1



MATERIAL :

- BODY : COPPER ALLOY C97
- SLEEVE STAINLESS STEEL PER AISI 305

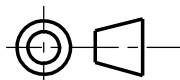
FINISH :

- BODY : GOLD PER SAE AMS-2422 OVER NICKEL PLATE PER SAE AMS-QQ-N-290

RADIALL TOOLING RECOMMANDATION

INSERTION/EXTRACTION TOOL : M81969/1-01 (RADIALL 282 885)  
SPL RADIALL INS. 282 880 / EXT. 282 890

DIMENSIONS : mm (inch) -



This information is given as an indication. In the continual goal to improve our products, we reserve the right to make any modifications judged necessary.

4112\_9311

CREATION				
PEN: M050400001D				
NOM: M.PESSARD				
DATE: June 09, 2005	Aug 24, 2005	Material becomes C97	M.PESSARD	L.GARCIA
APPR.: L.GARCIA	July 20, 2005	RR RR added in the title	M.PESSARD	LAHOREAU
	Issue	Revisions	Name	Approved