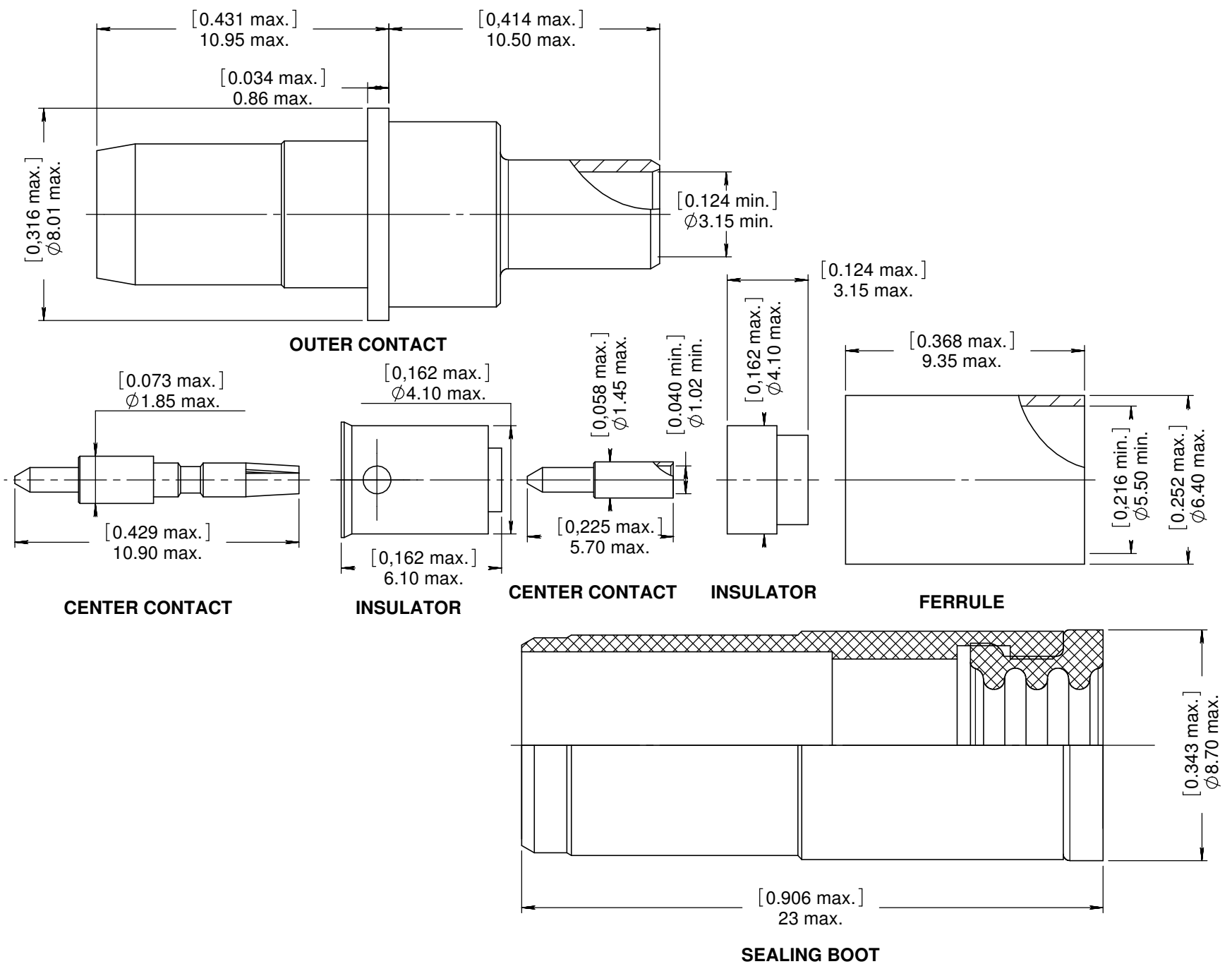


Series  
EPXB

ENVIRONMENTAL SIZE 8 PIN BMA QUADRAX CONTACT  
FOR RG142 CABLE

Issue:  
March 23, 2010

Page  
1/1



### MATERIALS & FINISHES :

- OUTER CONTACT : Stainless steel, passivated
- CENTER CONTACT : Copper alloy, Gold over nickel
- INSULATOR : PTFE or equivalent
- FERRULE : Brass, Nickel
- SEALING BOOT : Thermoplastic & Fluorosilicone elastomer

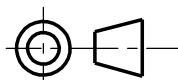
### ELECTRICAL CHARACTERISTICS :

- IMPEDANCE : 50 Ω
- FREQUENCY : 0-12.4 Ghz
- VSWR = 1.15 + 0.0100 x F(Ghz) Maxi
- INSERTION LOSS = 0.03 √ F (Ghz) dB Maxi
- VOLTAGE RATING : 350 Veff Maxi
- DIELECTRIC WITHSTANDING VOLTAGE : 1000 Veff Mini
- INSULATION RESISTANCE : 5000 MΩ mini

### NOTES :

- EXTRACTION TOOL : M81869/28-03 (RADIALL : 282 549 001) or M81869/14-06
- MOUNTING INSTRUCTION : MICT0500001

DIMENSIONS : mm (inch are given for information only)



CREATION				
PEN: 1007992				
NOM: PAILOT N.				
DATE: March 23, 2010	/	/	/	/
APPR.: LE GLOAHEC	Issue	Revisions	Name	Approved