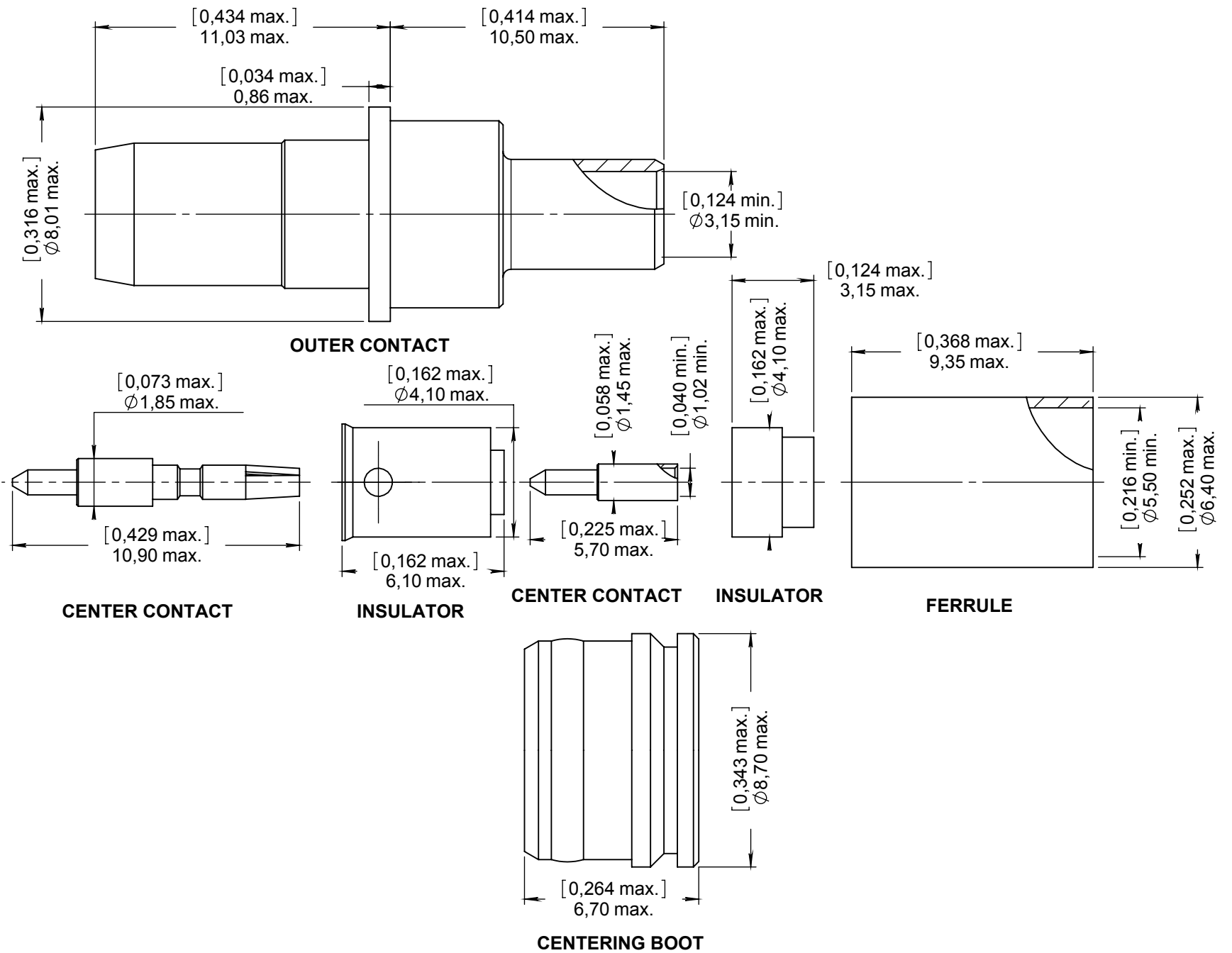


**Series
EPXB**
**SIZE 8 PIN BMA QUADRAX CONTACT
FOR RG142 CABLE**
**Issue:
Dec. 16, 2019**
**Page
1/1**

MATERIALS & FINISHES :

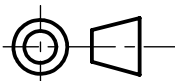
- OUTER CONTACT : Stainless steel, passivated
- CENTER CONTACT : Copper alloy, Gold over nickel
- INSULATOR : PTFE or equivalent
- FERRULE : Brass, Nickel
- CENTERING BOOT : PTFE or equivalent

ELECTRICAL CHARACTERISTICS :

- IMPEDANCE : 50 Ω
- FREQUENCY : 0-12.4 Ghz
- VSWR = 1.15 + 0.0100 x F(Ghz) Maxi
- INSERTION LOSS = 0.03 √ F (Ghz) dB Maxi
- VOLTAGE RATING : 350 Veff Maxi
- DIELECTRIC WITHSTANDING VOLTAGE : 1000 Veff Mini
- INSULATION RESISTANCE : 5000 MΩ mini

NOTES :

- EXTRACTION TOOL : M81869/28-03 (RADIALL : 282 549 001) or M81869/14-06
- MOUNTING INSTRUCTION : MICT0500001

DIMENSIONS : mm (inch are given for information only)


Estimated weight : 3,2 g

CREATION

PEN: 1007992

NOM: PAILOT N.

DATE: March 23, 2010

APPR.: LE GLOAHEC

Dec. 16, 19	Corrected dimension 10,95 max --> 11,03 max	WEIHS H.	LOPEZ C.
Issue	Revisions	Name	Approved

617171020EN

RADIALL PROPRIETARY INFORMATION

This document contains proprietary information and such information shall not be disclosed to any third party for any purpose whatsoever or used for manufacturing purposes without prior written agreement from RADIALL. This information is given as an indication. In the continual goal to improve our products, we reserve the right to make any modifications judged necessary.

4112_9311