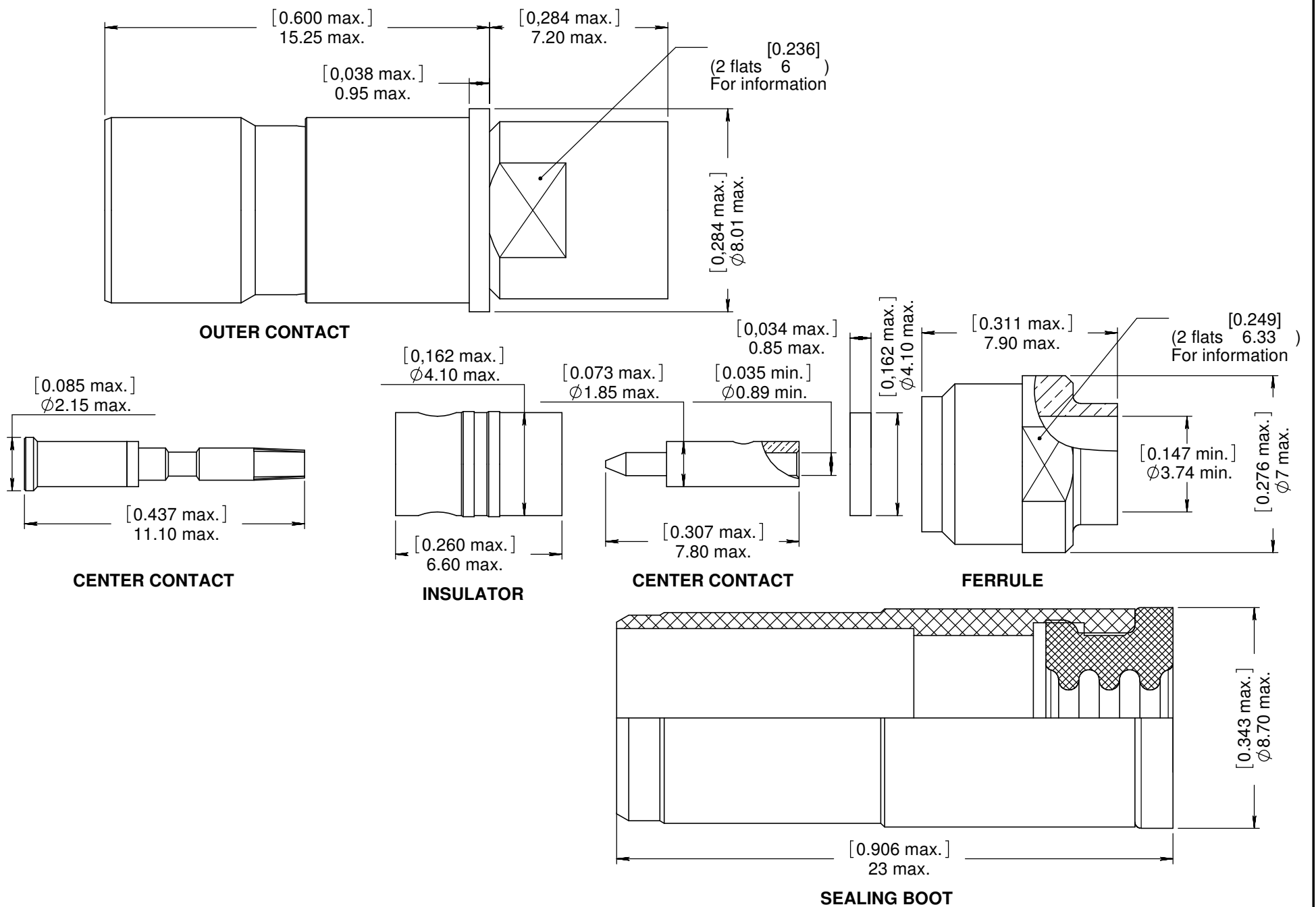


Series
EPXB

**ENVIRONMENTAL SIZE 8 SOCKET BMA CONTACT
FOR SHF3 CABLE**

Issue:
March 23, 2010

Page
1/1



MATERIALS & FINISHES :

- OUTER CONTACT : Stainless steel, passivated, with clip in Beryllium copper, gold over nickel
- CENTER CONTACT : Copper alloy, Gold over nickel
- INSULATOR : PTFE or equivalent
- FERRULE : Brass, Gold over Nickel plated
- SEALING BOOT : Thermoplastic & Fluorosilicone Elastomer

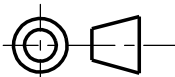
ELECTRICAL CHARACTERISTICS :

- IMPEDANCE : 50 Ω
- FREQUENCY : 0-18 Ghz
- VSWR = 1.05 + 0.0100 x F(Ghz) Maxi
- INSERTION LOSS = 0.03 √ F (Ghz) dB Maxi
- RF LEAKAGE = -(80 -F (Ghz)) dB Maxi
- VOLTAGE RATING : 335 Veff Maxi
- DIELECTRIC WITHSTANDING VOLTAGE : 1000 Veff Mini
- INSULATION RESISTANCE : 5000 MΩ mini

NOTES :

- EXTRACTION TOOL : M81869/28-03 (RADIALL : 282 549 001) or M81869/14-06
- Contacts for SHF cables can't be sold alone but with a complete cable assembly

DIMENSIONS : mm (inch are given for information only)



Confidential information not to be disclosed to third parties without Radiall approval. This information is given as an indication in the continual goal to improve our products, we reserve the right to make any modifications judged necessary.

4112_9311

CREATION				
PEN: 1007992				
NOM: PAILOT N.				
DATE: March 29, 2010	/	/	/	/
APPR.: LE GLOAHEC	Issue	Revisions	Name	Approved