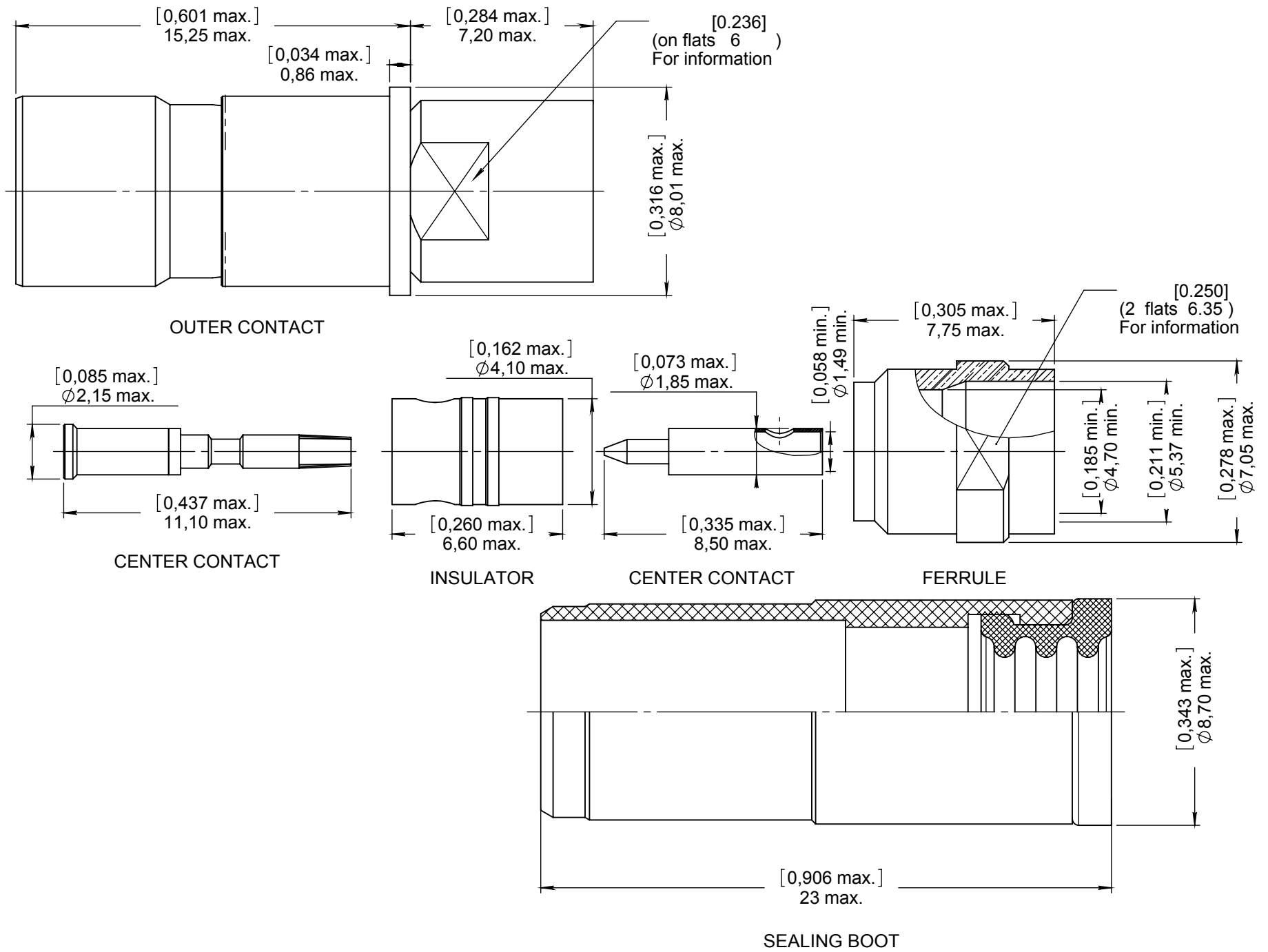


Series  
EPXB

ENVIRONMENTAL SIZE 8 SOCKET BMA QUADRAX CONTACT  
FOR SHF5 ; SHF5M ; SHF5MAF-2 & SHF5L1 VERT CABLES

Issue:  
Aug 08, 2012

Page  
1/1



**MATERIALS & FINISHES :**

- OUTER CONTACT : Stainless steel, passivated with Clip in Beryllium copper, gold over nickel
- CENTER CONTACT : Copper alloy, Gold over nickel
- INSULATOR : PTFE or equivalent
- FERRULE : Brass, gold over Nickel
- SEALING BOOT : Thermoplastic & Fluorosilicone elastomer

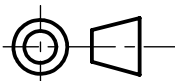
**ELECTRICAL CHARACTERISTICS :**

- IMPEDANCE : 50  $\Omega$
- FREQUENCY : 0-18 Ghz
- VSWR = 1.05 + 0.0100 x F(Ghz) Maxi
- INSERTION LOSS = 0.03  $\sqrt{F}$  (Ghz) dB Maxi
- RF LEAKAGE = -( 80 -F (Ghz)) dB Maxi
- VOLTAGE RATING : 335 Veff Maxi
- DIELECTRIC WITHSTANDING VOLTAGE : 1000 Veff Mini
- INSULATION RESISTANCE : 5000 M $\Omega$  mini

**NOTES :**

- EXTRACTION TOOL : M81869/28-03 (RADIALL : 282 549 001) or M81869/14-06
- Contacts for SHF cables can't be sold alone but with a complete cable assembly

DIMENSIONS : mm (inch are given for information only)



Confidential information not to be disclosed to third parties without Radiall approval. This information is given as an indication. In the continual goal to improve our products, we reserve the right to make any modifications judged necessary.

4112\_9311

CREATION				
PEN: 1007992				
NOM: PAILOT N.				
DATE: March 23, 2010	Aug 08, 2012	Title corrected	CHEVREAU M.	LE GLOAHEC Y.
APPR.: LE GLOAHEC Y.	Issue	Revisions	Name	Approved