

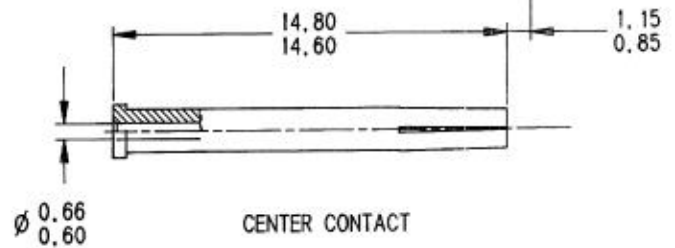
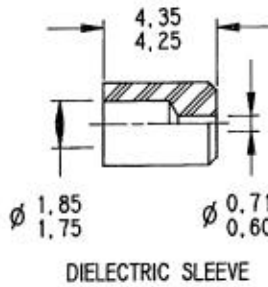
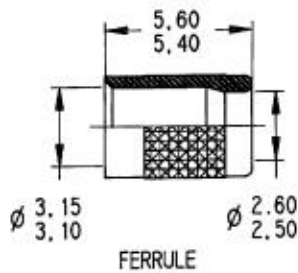
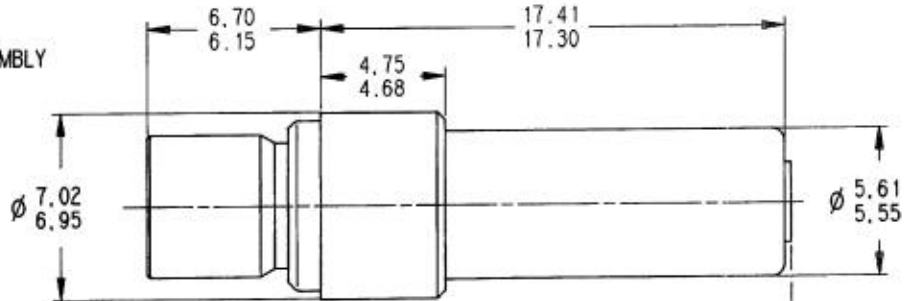
Séries
DSX

SIZE 5 COAXIAL PIN CONTACT
FOR KX 22 DT AND RG 316 DT

Issue:
30 MARCH 93

Page
1 / 1

OUTER CONTACT SUB ASSEMBLY

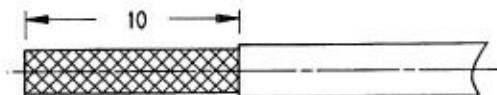


MATERIAL AND FINISH:
 OUTER CONTACT: COPPER ALLOY _ GOLD OVER NICKEL UNDERPLATE
 CENTER CONTACT: BERYLLIUM COPPER _ GOLD OVER NICKEL UNDERPLATE
 FERRULE: ANNEALED BRASS _ GOLD OVER NICKEL UNDERPLATE
 DIELECTRIC: PTFE

WIRING INSTRUCTIONS:

STEP 1

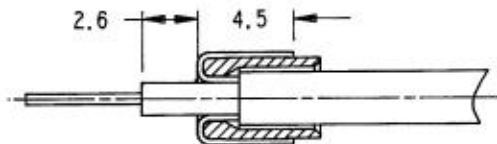
STRIP THE 1st BRAID AT DIMENSION SHOWN



SLIDE THE FERRULE OVER THE BRAID UNTILL IT BUTTS AGAINST CABLE JACKET
 FOLD COMBED BACK BRAID OVER FERRULE. STRIP AND FOLD BACK 2nd BRAID OVER THE FIRST

STEP 2

CUT BRAIDS AT DIMENSION SHOWN
 STRIP CENTER CONDUCTOR AT DIMENSION SHOWN



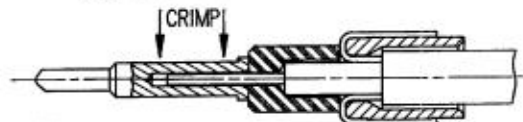
STEP 3

SLIDE DIELECTRIC SLEEVE AND CENTER CONTACT OVER CENTER CONDUCTOR

CRIMP CENTER CONTACT USING:

CRIMPING TOOL : M22520/2-01 (RADIALL 282281)
 SELECTOR : 7 FOR KX 22 DT AND RG 316 DT

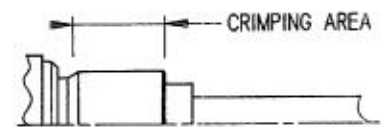
POSITIONNER : RADIALL 282974



STEP 4

INTRODUCE CENTER CONTACT SUB ASSEMBLY INTO OUTER CONTACT AND CRIMP USING:

CRIMPING TOOL : M22520/5-01 (RADIALL 282293)
 DIE : M22520/5-05 (RADIALL 282246) HEX B 4.5/FLATS



This information is given as an indication. In the continual goal to improve our products, we reserve the right to make any modifications judged necessary.

4112_9212

CREATION			
PEN: 93014			
EP: .			
Name: BALDYROU			
Date: 15 MAR.93	30.03.93	UPDATE	JP MACARI
	Issue	Revisions	Name

RADIALL[®]

101, rue Philibert Hoffmann, Z.I. Ouest
 93116 ROSNY/BOIS Cedex (France)
 Tél.: (1) 49 35 35 35
 Fax.: (1) 48 54 63 63
 Télex: RADIA 235220

XXXXXXXX

Ces renseignements sont donnés à titre indicatif. Dans le but constant d'améliorer nos produits, nous nous réservons le droit d'apporter toutes modifications jugées utiles.