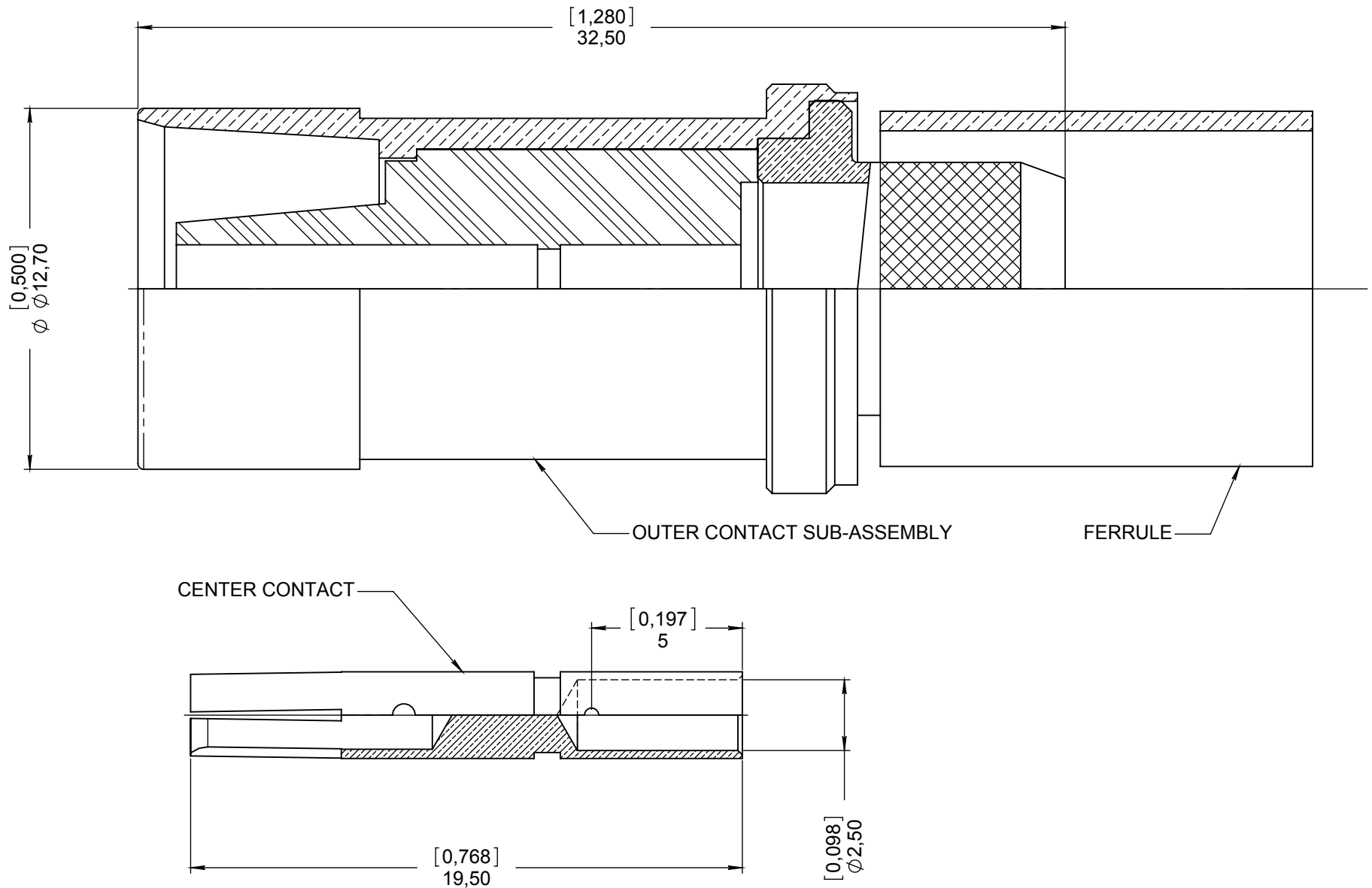


Series  
DSX

SIZE 1 COAXIAL SOCKET CONTACT  
FOR RG 225 AND KX 24 CABLES

Issue:  
Jan. 27, 2015

Page  
1/1



WIRING INSTRUCTIONS: SEE MICT0100022  
ASSEMBLING INSTRUCTION (in MC2 insert) : SEE MICT0100045

**MATERIAL:**

- OUTER CONTACT BODY: BRASS PER ASTM B 16/B 16M
- CENTER CONTACT: BERYLLIUM COPPER PER ASTM-B-196
- DIELECTRIC : PTFE PER ASTM-D-1710 OR EQUIVALENT
- FERRULE: BRASS PER ASTM B 16/B 16M

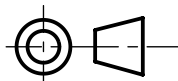
**FINISH:**

- OUTER CONTACT BODY, CENTER CONTACT AND FERRULE:  
PLATING .00005 INCH OF GOLD PER MIL-G-45204 TYPE I OR II GRADE C OR D CLASS 1  
OVER NICKEL QQ-N-290

**ELECTRICAL CHARACTERISTICS:**

- IMPEDANCE : 50 OHMS
- R.O.S 1,3 OF 10 MHz TO 5 GHz
- DIELECTRIC WITHSTANDING VOLTAGE : 1500 V

DIMENSIONS : mm (inch are given for information only)



Estimated weight : 17 g

<b>CREATION</b>  PEN: 82076  NOM: GESBERT DATE: Apr, 19. 1982 APPR.: .				
	Jan. 27, 15	TDS updated and add MICT0100022 / MICT0100045	Moutault	Legendre
	Apr. 13, 84	Ajouter trou dans ct central	Macari	/
	Dec. 12, 83	Aménagement du fut de sertissage	Macari	/
	Issue	Revisions	Name	Approved