



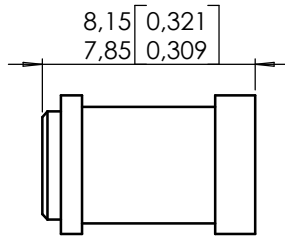
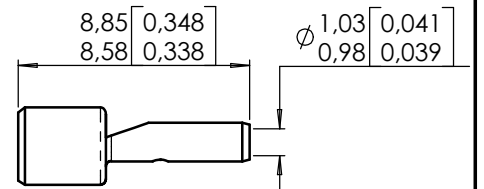
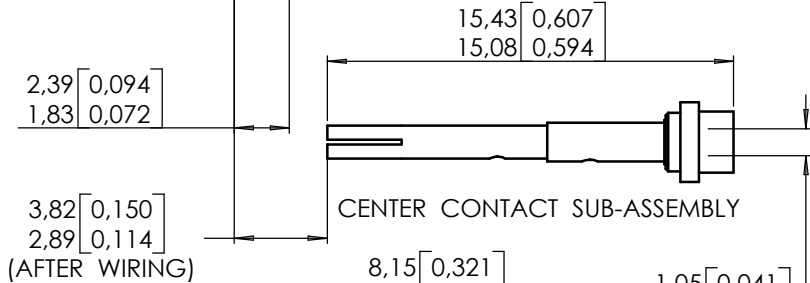
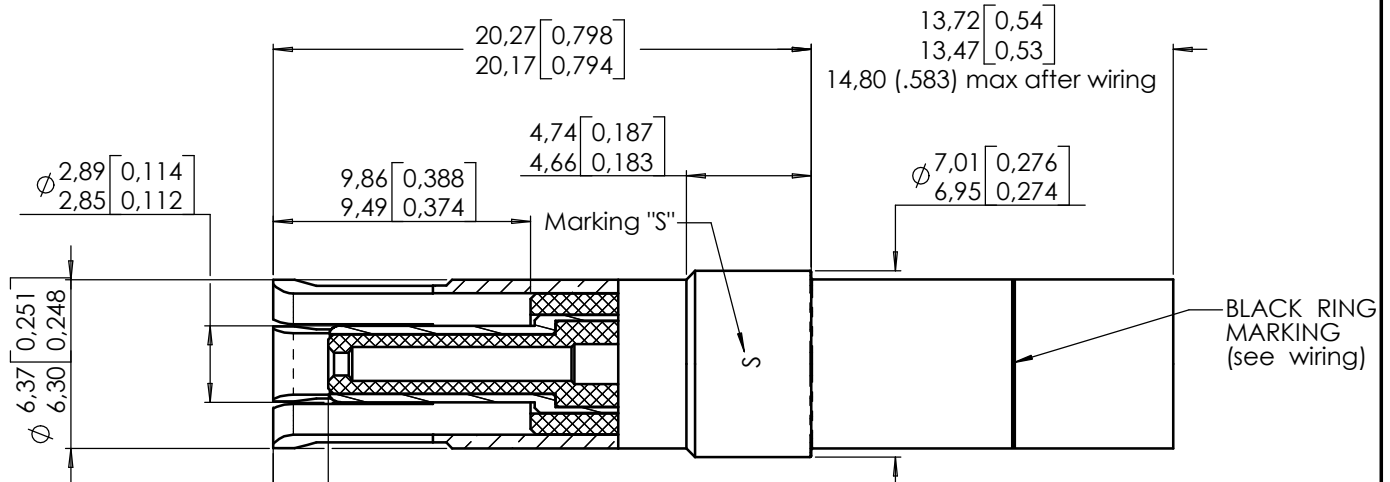
Series  
DSX

ENVIRONMENTAL SIZE 9 CONCENTRIC TWINAX SOCKET CONTACT FOR 32C4, 32T4 and 14C8 ONLY  
FOR F2709/9 CABLE

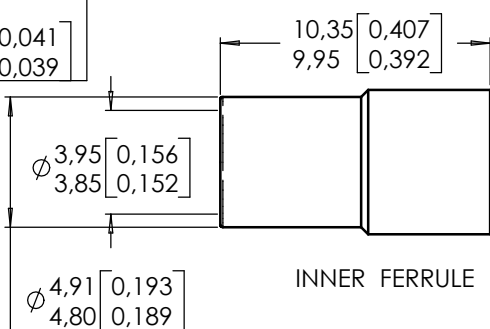
Issue:  
18 APRIL 05

Page  
1/2

OUTER AND INTERMEDIATE CONTACT SUB-ASSEMBLY

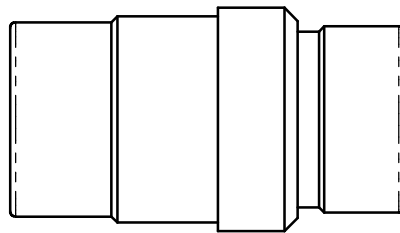


DIELECTRIC SLEEVE

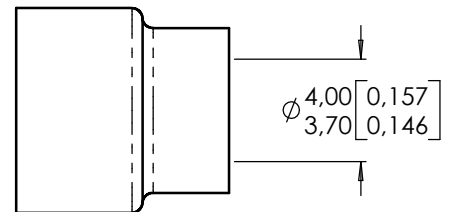


INNER FERRULE

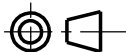
SEALING BUSHING



SEALING SLEEVE



DIMENSIONS : mm (inch) -



This information is given as an indication, in the continual goal to improve our products, we reserve the right to make any modifications judged necessary.

4112\_9311

CREATION				
PEN: M040009031A				
NOM: B.GOMBERT				
DATE: 29 SEPT. 04	18/04/05	$\phi$ 0,98/1,03 were $\phi$ 0,85/0,92 for wiring	B.Gombert	C.Lahoreau
APPR.: C.LAHOREAL	06/01/05	SPECIFICATION WIRING WAS RP57916	B.Gombert	C.Lahoreau
	Issue	Revisions	Name	Approved



MATERIAL AND FINISH

ALL METAL PARTS: COPPER ALLOY\_0.000050 INCH OF GOLD NICKEL  
 DIELECTRIC PARTS: P.T.F.E.  
 SEALING BUSHING : PEI  
 SEALING SLEEVE : ELASTOMER SILICONE

TOOLS : (order separatly)

CENTER CONTACT : CRIMPING TOOL M22520/2\_01 (RADIALL 282281)  
 POSITIONER RADIALL 282576  
 INTERMEDIATE CONTACT CRIMP POT : CRIMPING TOOL M22520/2\_01 (RADIALL 282281)  
 POSITIONER RADIALL 282574  
 OUTER CONTACT : CRIMPING TOOL M22520/5\_01 (RADIALL 282293)  
 DIE M22520/5\_45 (RADIALL 282236)

EXTRACTION TOOL M81659/28\_01 (RADIALL 282946)

WIRING : SEE SPECIFICATION MICT0300003

4112\_9311 This information is given as an indication. In the continual goal to improve our products, we reserve the right to make any modifications judged necessary.