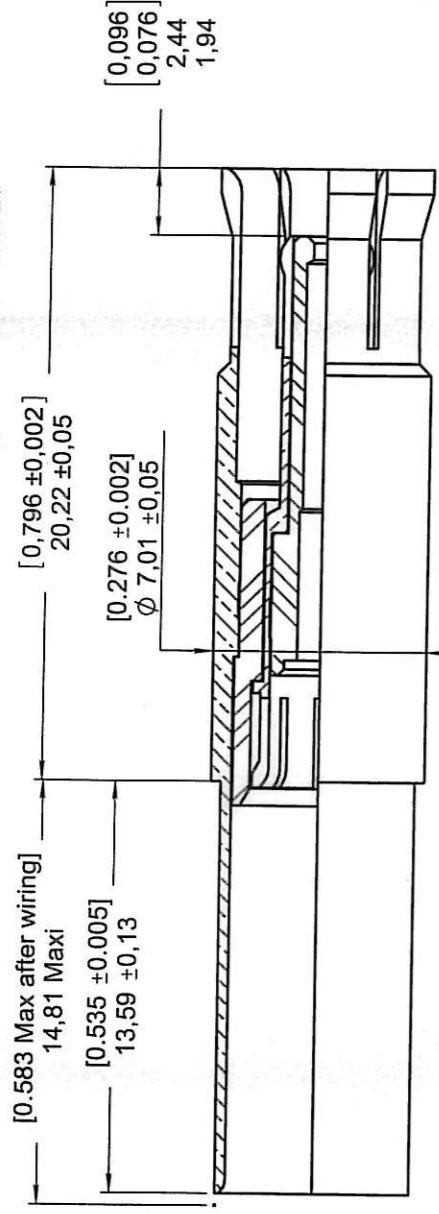
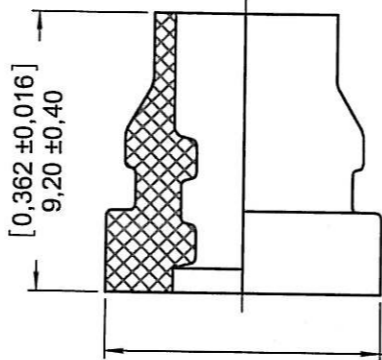
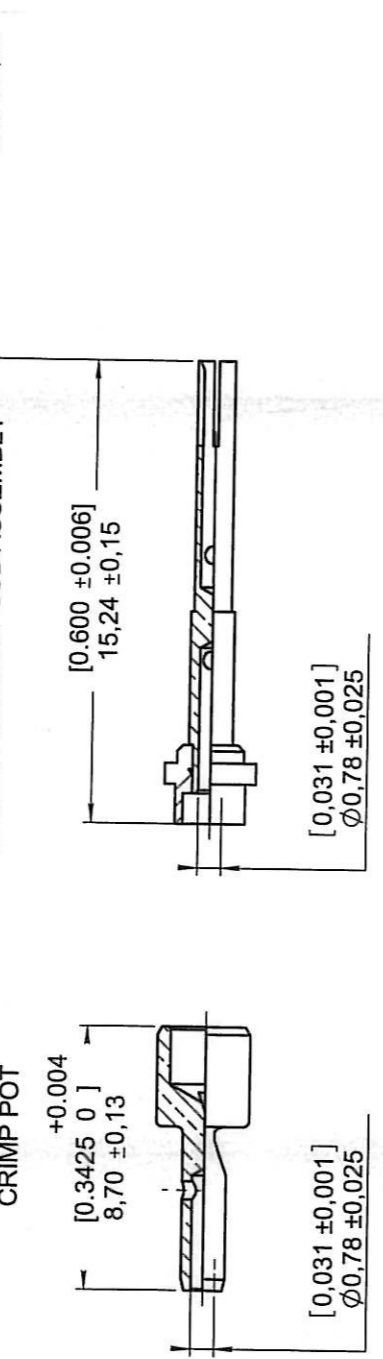


OUTER CONTACT AND INTERMEDIATE CONTACT SUB ASSEMBLY

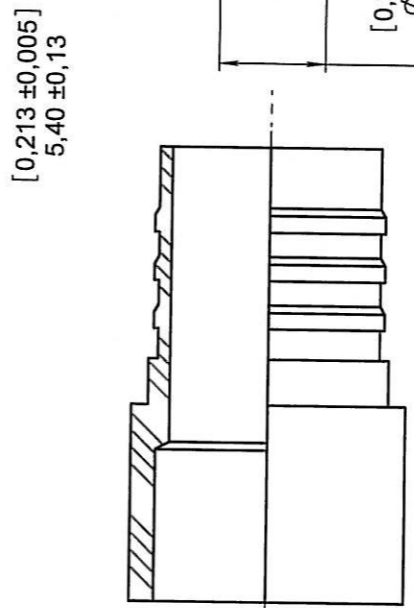


CENTER CONTACT SUB ASSEMBLY

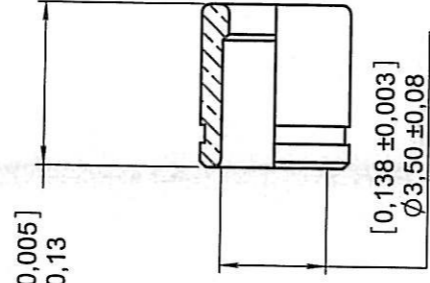


SEALING BOOT

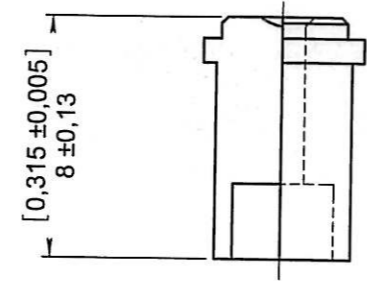
[0,354 ±0,008]
Ø9 ±0,20



SEALING BUSHING



INNER FERRULE



DIELECTRIC SLEEVE

MATERIAL

OUTER, INTERMEDIATE AND CENTER CONTACT: BERYLLIUM COPPER PER ASTM-B-196 OR EQUIVALENT
INNER FERRULE: BRASS PER ASTM B 16/B 16M
INSULATOR, SEALING BUSHING AND DIELECTRIC SLEEVE : PTFE PER ASTM-D-1710 OR EQUIVALENT
SEALING BOOT : FLUOROSILICONE ELASTOMER PER SAE AMS-R.25988

FINISH :

ALL METALIC PARTS : 00005 OF GOLD PER MIL-G-45204, TYPE I or II, GRADE C ou D
CLASS 1 OVER NICKEL PER QQ-N-290

CENTER CONTACT :

CRIMPING TOOL M22520/2-01 (RADIALL P/N 282281)
SELECTOR SET : 5
POSITIONER RADIALL P/N 282576

INTERMEDIATE CONTACT :

CRIMPING TOOL M22520/2-01 (RADIALL P/N 282281)
SELECTOR SET : 5

OUTER CONTACT :

POSITIONER RADIALL P/N 282574
CRIMPING TOOL M22520/5-01 (RADIALL P/N 282293)
DIE M22520/5-45, DIE CLOSURE A (RADIALL P/N 282236) DIE CLOSURE B

EXTRACTION TOOL M81969/28-01 (RADIALL 282946) MUST BE ORDER SEPARATLY
EXTRACTION AND INSERTION TOOL FOR SEALING BUSHING (RADIALL P/N 282549015) MUST BE ORDER SEPARATLY

WIRING : SEE SPECIFICATION RP3364

ATTENTION: SLIDE OUTER SEALING BOOT AND SEALING BUSHING OVER THE CABLE BEFORE WIRING



DIMENSIONS : mm (inch are given for information only)

CREATION			
PEN: MIL12302			
NOM: MACARI			
DATE: 12 OCT 1993	APRIL 08, 09	ADDED P/N CUSTOMER	MONDOT BROCHET
APPR.:	12 OCT 07	REDRAWN - ADDED PRECISION OF MATERIAL	VALGRESY MONDOT
	Issue	Revisions	Name
			Approved

616095009EN

RADIALL PROPRIETARY INFORMATION

This information is given as an indication. In the continual goal to improve our products, we reserve the right to make any modifications judged necessary.