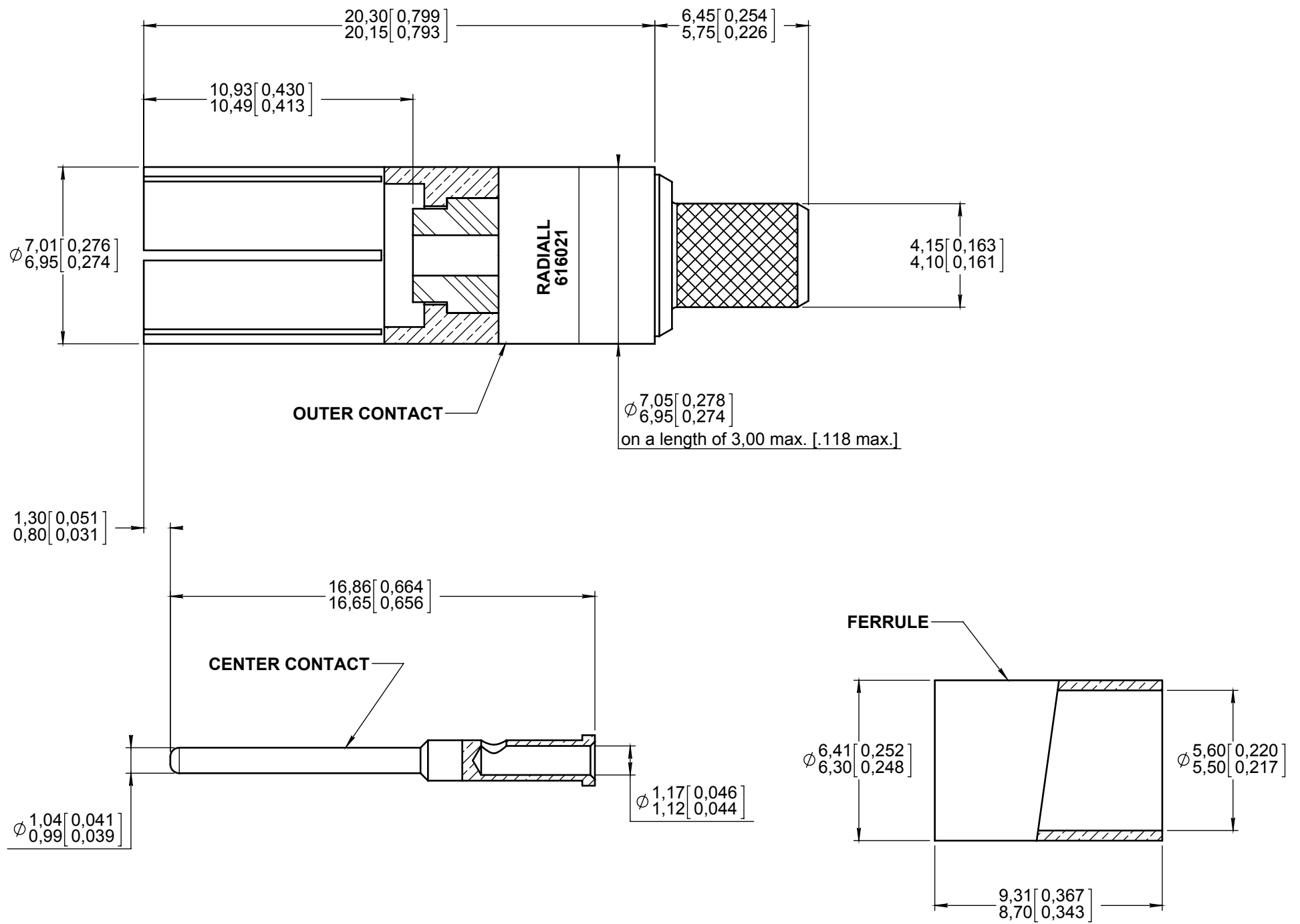


Series  
DSX

NON ENVIRONMENTAL SIZE 5 CRIMP COAX SOCKET CONTACT  
FOR RG142/U, RG223/U, KX23, RG400 AND ASNE0293XF CABLES

Issue:  
Sept. 18, 2014

Page  
1/2



**MATERIAL :**  
 OUTER CONTACT : BERYLLIUM COPPER PER ASTM-B-196  
 INSULATOR : PTFE PER ASTM-D-1710 or EQUIVALENT  
 CENTER CONTACT and FERRULE: BRASS PER ASTM B 453/B453M or EQUIVALENT  
 CRIMP BARREL: BRASS PER ASTM B 455 or EQUIVALENT

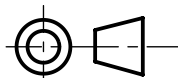
**FINISH:**  
 ALL METALIC PARTS: PLATING .00005 INCH OF GOLD PER SAE AMS-2422 OVER NICKEL PER AMS-2403

**DESIGN REQUIREMENTS**  
 TEMPERATURE RANGE: -65°C to +125°C  
 IMPEDANCE : 50 OHMS NOMINALE  
 DIELECTRIC WITHSTANDING VOLTAGE: 750 V rms AT SEA LEVEL  
 VSWR: 1.3 from DC to 1500 MHz

EXTRACTION TOOL: 282946 (M81969/28-01) (MUST BE ORDER SEPARATLY)

WIRING INSTRUCTIONS: SEE PAGE 2/2

**DIMENSIONS : mm (inch are given for information only)**



Estimated weight : 4,20 g

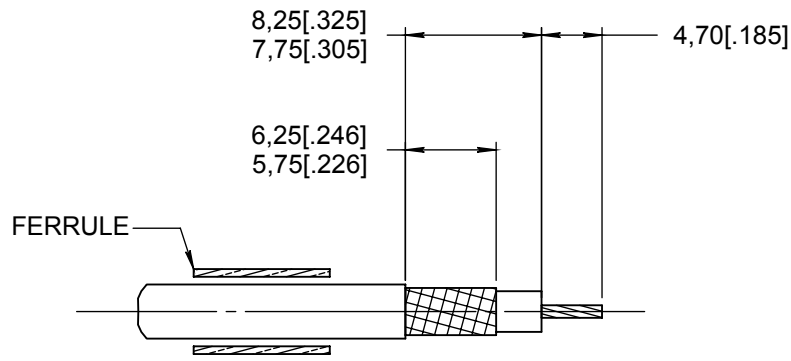
<b>CREATION</b>	Sept. 18, 14	Ø7.05/6.95 on 2 mm min -> on 3mm max	Branjonneau	Dupuis
	Sept. 12, 14	Dim body updated : add Ø7.05/6.95 on 2 mm	Moutault	Dupuis
<b>PEN:</b>	Feb. 03, 12	Positionner : Radiall 282974 replaced by Positionner : Daniels K345 (Radiall 282550)	Mondot JC	Dupuis
<b>NOM: MACARI</b>	Feb. 02, 12	Add ASNE0293XF cable and see P2/2	Mondot JC	Dupuis
<b>DATE: May 12, 1982</b>	29/12/03	Add RG400 cable and see P2/2 ; supp RP4284	Gombert	Lahoreau
<b>APPR.:</b>	11/09/87	Creation english draw	Faletti	/
	Issue	Revisions	Name	Approved

616021EN

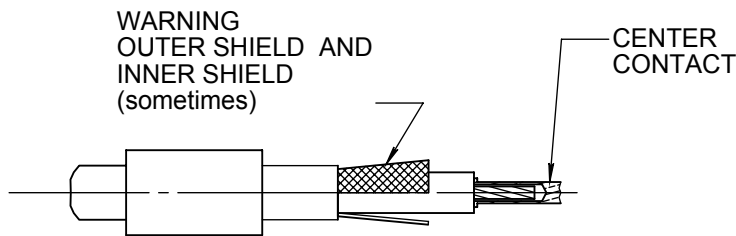
RADIALL PROPRIETARY INFORMATION

This document contains proprietary information and such information shall not be disclosed to any third party for any purpose whatsoever or used for manufacturing purposes without prior written agreement from RADIALL. This information is given as an indication. In the continual goal to improve our products, we reserve the right to make any modifications judged necessary.

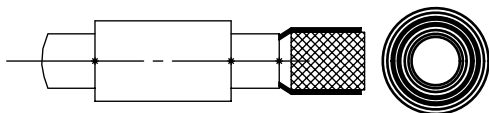
4112\_9311



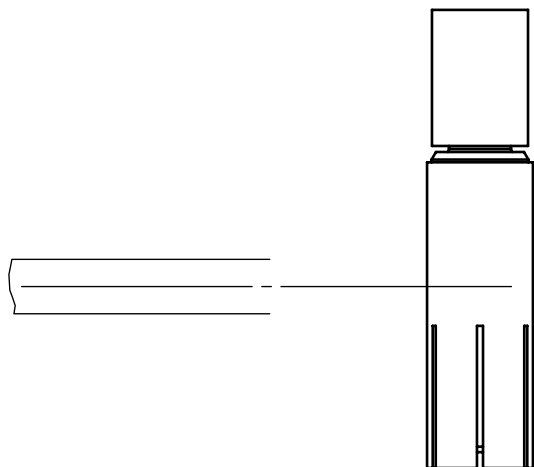
**STEP 1**  
SLIDE FERRULE OVER CABLE  
STRIP CABLE TO DIMENSIONS SHOWN



**STEP 2**  
SLIDE CENTER CONTACT BARREL OVER CABLE CONDUCTOR  
CONTACT SHOULDER BUTTING AGAINST CABLE DIELECTRIC  
CRIMP CENTER CONTACT USING :  
CRIMPING TOOL : M22250/2-01 (RADIALL 282281)  
SELECTOR ON: 6 FOR RG400 AND ASNE0293XF CABLES  
SELECTOR ON: 8 FOR RG142/U; RG223/U; KX23 CABLES  
POSITIONNER : DANIELS K345 (RADIALL 282550)  
FLARE BRAIDS  
  
(CRIMPING TOOL AND POSITIONNER MUST BE ORDER SEPARATLY)



**STEP 3**  
INSERT CENTER CONTACT INTO THE OUTER CONTACT BODY  
PLACE BRAIDS OVER KNURLED PART OF OUTER CONTACT BODY



**STEP 4**  
SLIDE FERRULE OVER BRAIDS UNTIL IT BUTTS AGAINST SHOULDER OF  
OUTER CONTACT BODY  
CRIMP FERRULE USING :  
CRIMPING TOOL: M22520/5-01 (RADIALL 282293)  
DIE : M22520/5-05 (RADIALL 282246)  
HEX: A 5,40 (.213) / FLATS  
  
(CRIMPING TOOL AND DIE MUST BE ORDER SEPARATLY)

This document contains proprietary information and such information shall not be disclosed to any third party for any purpose whatsoever or used for manufacturing purposes without prior written agreement from RADIALL. This information is given as an indication. In the continual goal to improve our products, we reserve the right to make any modifications judged necessary.

4112\_9311