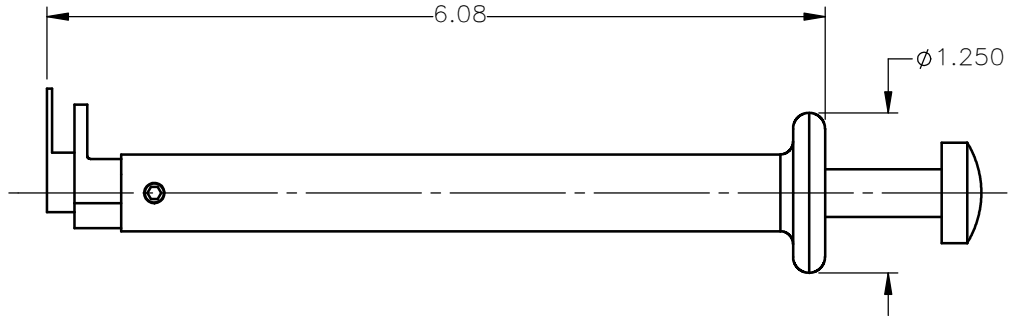
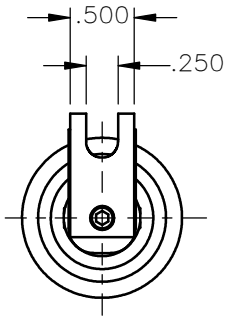
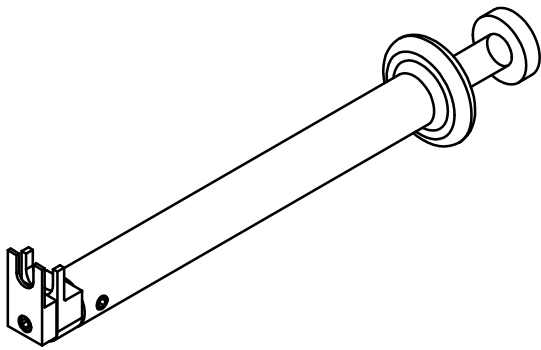




REVISIONS			
REV.	DESCRIPTION	DATE	APPROVED
A	INITIAL RELEASE	03/19/08	A.D.M.
B00	Ø1.25 WAS Ø1.50	02/25/15	D.N.



NOTES:

MATERIALS:

1. BODY SHAFT & PALM PAD = 2011 ALUMINUM.
2. BRACKET & POSITIONER = 1018 STEEL.
3. PUSHER SHAFT & ALIGNMENT PIN = STAINLESS STEEL PER ASTM A582, ALLOY 303, CONDITION "A".

UNLESS OTHERWISE SPECIFIED DIMENSIONS ARE IN INCHES TOLERANCES ON	DWN: A.D.M.	DATE 03/19/08	 Property of Radiall This document cannot be reproduced or communicated to a third party without prior written permission of RADIALL.			
	CHKD: D.N.	DATE 03/19/08				
DECIMAL	ANGLE	APVD: J.M.			DATE 03/19/08	
REFERENCE: ORIGINATED: A.D.M. DATE: 03/19/08		MATERIALS: SEE NOTES			SIZE A	FSCM NO. 19505
		SCALE 1:1.5	THIRD ANGLE PROJECTION	SHEET 1 OF 1		

TA-0457