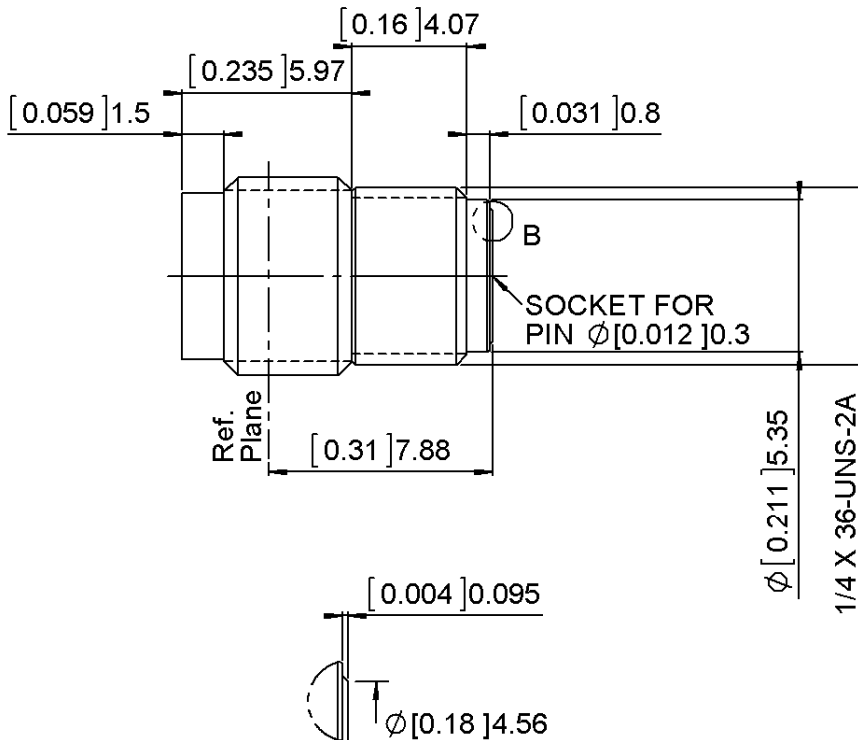


UNIVERSAL SCREW RECEPTACLE

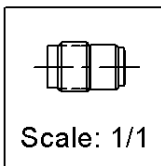
R327.556.000

FOR AXIS 0.3 MM

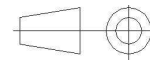
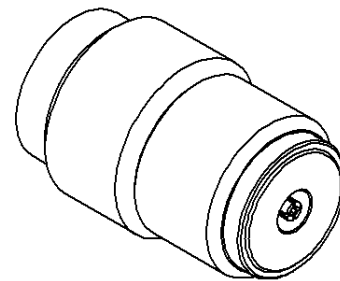
Series : **2.4MM**



DETAIL B
SCALE 8 : 1



All dimensions are in mm.



COMPONENTS	MATERIALS	PLATING (µm)
BODY	BERYLLIUM COPPER	GOLD 0.8 OVER COPPER 2.5
CENTER CONTACT	BERYLLIUM COPPER	GOLD 1.3 OVER NICKEL 2
OUTER CONTACT	BRASS.	GOLD 0.8 OVER COPPER 2.5
INSULATOR	PEEK	
GASKET		
OTHERS PARTS		
-	-	-
-	-	-

Issue : 1351 A

In the effort to improve our products, we reserve the right to make changes judged to be necessary.



UNIVERSAL SCREW RECEPTACLE
FOR AXIS 0.3 MM

R327.556.000

Series : **2.4MM**

PACKAGING

Standard	Unit	Other
1	'W' option	Contact us

SPECIFICATION

ELECTRICAL CHARACTERISTICS

Impedance	50	Ω
Frequency	0-50	GHz
VSWR	1.05 + 0.0040	x F(GHz) Maxi
Insertion loss	0.04	\sqrt{F} (GHz) dB Maxi
RF leakage	- (100*	- F(GHz)) dB Maxi
Voltage rating	250	Veff Maxi
Dielectric withstanding voltage	500	Veff mini
Insulation resistance	5000	M Ω mini

ENVIRONMENTAL

Operating temperature	-65/+165	$^{\circ}$ C
Hermetic seal	NA	Atm.cm3/s
Panel leakage	NA	

OTHER CHARACTERISTICS

Assembly instruction

Others :

*RF leakage at 1 GHz

MECHANICAL CHARACTERISTICS

Center contact retention		
Axial force – Mating end	27	N mini
Axial force – Opposite end	27	N mini
Torque	NA	N.cm mini
Recommended torque		
Mating	NA	N.cm
Panel nut	NA	N.cm
Mating life	500	Cycles mini
Weight	2.3400	g

Issue : 1351 A

In the effort to improve our products, we reserve the right to make changes judged to be necessary.

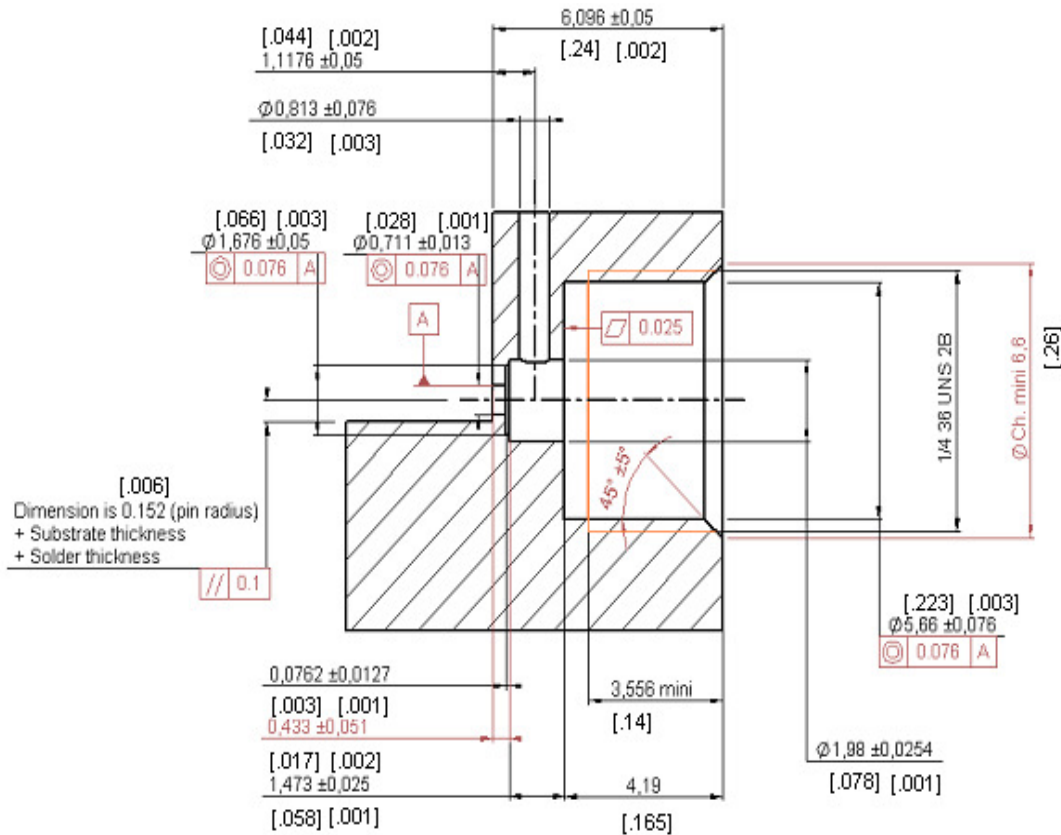
RADIALL 

UNIVERSAL SCREW RECEPTACLE

R327.556.000

FOR AXIS 0.3 MM

Series : **2.4MM**



To obtain correct concentricity and dimensions on the panel drilling,
we recommend to use RADIALL special tools:
R282.080.000 drilling tool
and R282.082.000 screw tap

Issue : 1351 A

In the effort to improve our products, we reserve the right to make changes judged to be necessary.



UNIVERSAL SCREW RECEPTACLE
FOR AXIS 0.3 MM

R327.556.000

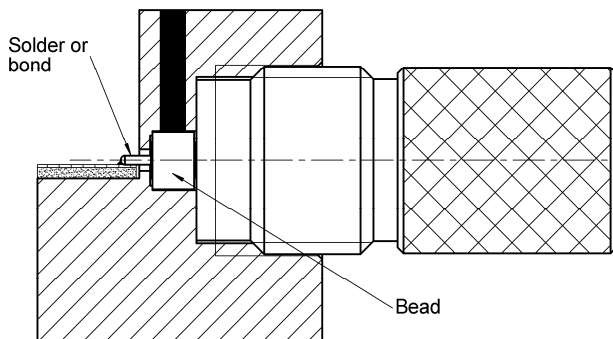
Series : 2.4MM

Soldering of the glass bead and mounting of the 2.4mm on the housing

1

SOLDERING of the glass bead

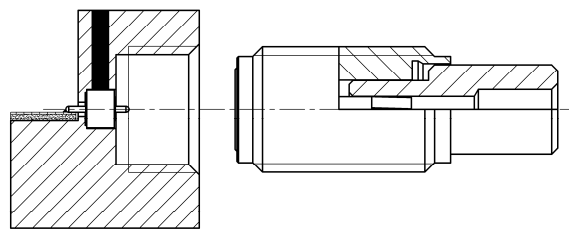
Set up of the R280.760.000 glass bead in the housing.
 keep the glass Bead into position thanks to
 R282.745.000 Positioneer



3

MOUNTING of the flange on the box

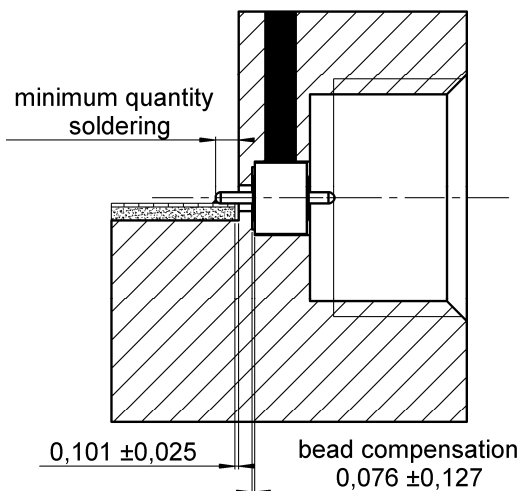
Set up the R282.860.000 position gauge on the flange to ensure a good concentricity.
 Screw the assembly on the housing.



2

POSITION of the glass bead after soldering

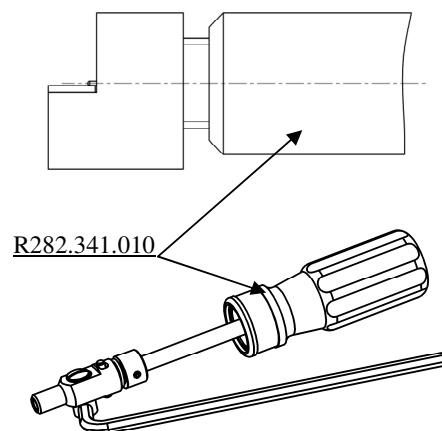
Check the soldering quality as well as the position of the glass bead in the housing.



4

Locking of the flange on the box

Lock the flange on the housing thanks to
 R282.341.010 dynamometer screw-driver



Issue : 1351 A

In the effort to improve our products, we reserve the right to make changes judged to be necessary.

