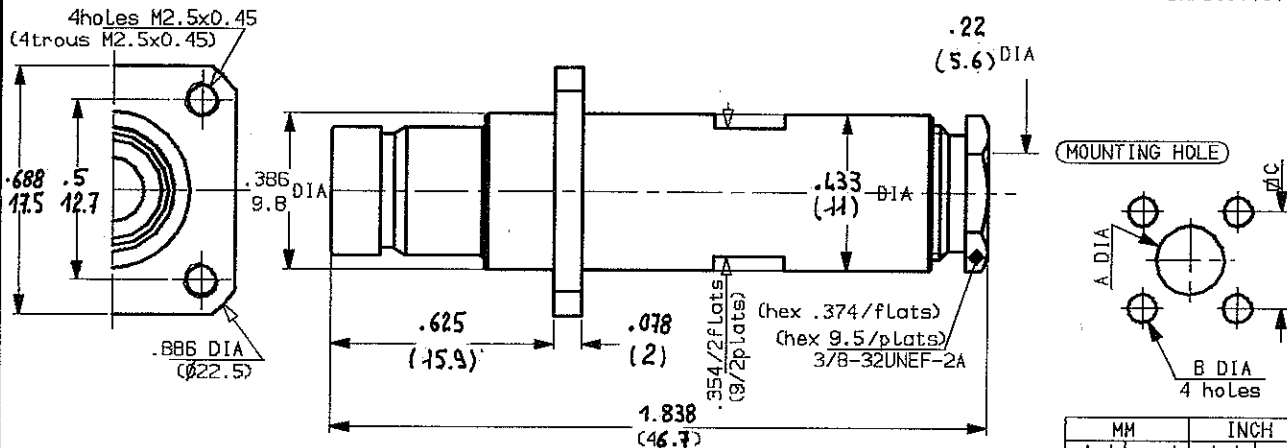


STRAIGHT FLANGE CABLE JACK

CABLE 5/50

DMP90.11.002



WEIGHT oz (g)

CABLES : 5/50 +

CHARACTERISTICS

NOMINAL IMPEDANCE	50 Ω
FREQUENCY RANGE	0-2 GHz
TEMPERATURE RATING	-65/+165 °C
VSWR	AD Max
RF INSERTION LOSS	AD √F dB Maxi
VOLTAGE RATING	AD Vrms Maxi
DIELECTRIC WITHSTANDING VOLTAGE	12000 Vrms mini
INSULATION RESISTANCE	10000 MΩ mini
HERMETIC SEAL	NA cc/s Atm.cm ³ /s
LEAKAGE (pressurized only)	AD psi MPa
-	-
-	-

STANDARDISATION

CABLE RETENTION	40.5 lb mini 180 N
CENTER CONTACT RETENTION	
Axial force - mating end	NA lb mini N
Axial force - opposite end	NA lb mini N
Torque (Min)	NA Inch.oz cm.N
RECOMMENDED TORQUES	
Mating	NA inch.lb cm.N
Panel nut	NA Inch.lb cm.N
Clamp nut	13.29 inch.lb 150 cm.N

CONSTRUCTION

CONNECTOR PARTS	MATERIALS	FINISH
BODY	BRASS	BLACK CHROMIUM
OUTER CONTACT	BRASS	NICKEL
CENTER CONTACT	BERYLLIUM COPPER	GOLD
INSULATORS	PTFE	-
-	-	-
-	-	-
-	-	-
-	-	-
-	-	-
-	-	-

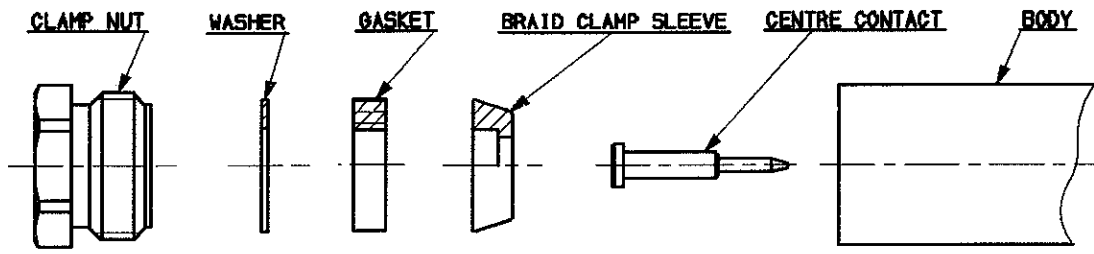
ISSUE	REVISION No	DESCRIPTION	BY	DATE
.
.
.
.

Initiated on 14-NOV-90

The information given here is subject to change without notice. Design changes may be in order to improve the product.

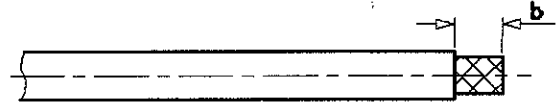


Superseded on



1

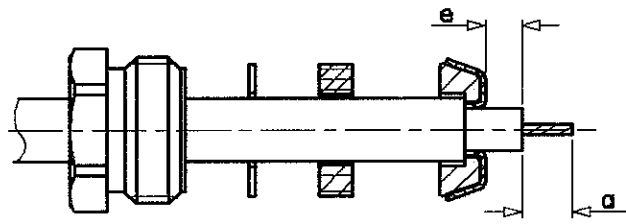
1-1 Strip the cable .



Stripping	a	b	c	d	e
inch	.138	.787	-	-	.61
mm	3.5	20	-	-	15.5

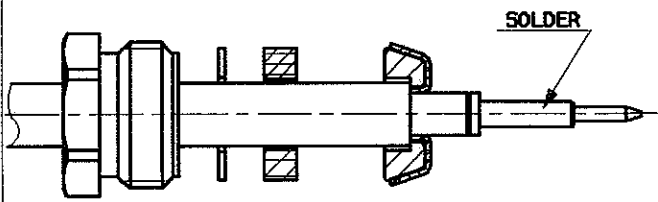
2

- 2-1 Slide the clamp nut, the washer and the gasket onto the cable .
- 2-2 Slide clamp braid sleeve over braid .
- 2-3 Fold back braid and trim off surplus braid .
- 2-4 Trim back dielectric as shown .



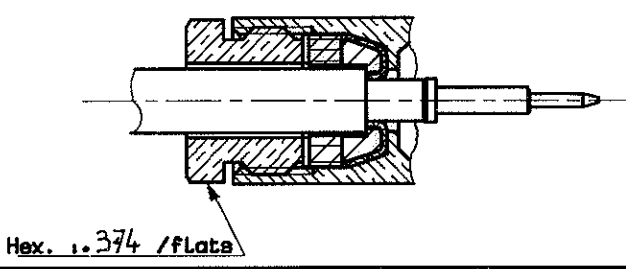
3

3-1 Solder the cable inner conductor into centre contact .



4

4-1 Screw sub-assembly into the connector body .
Recommended coupling torque
13.29 in. lb



ISSUE	REVISION No	DESCRIPTION	BY	DATE
.
.
.

Initiated on 15 Nov 90
Superseded on _____

The information given here is subject to change without notice. Design changes may be in order to improve the product.

