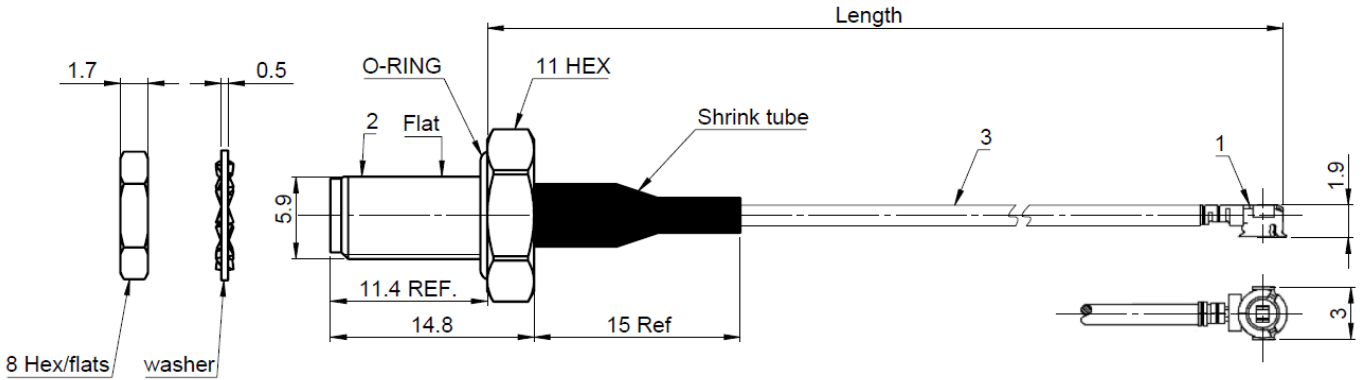
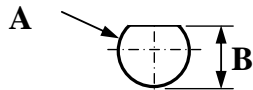


PAGE 1/1	ISSUE 30-11-15A	SERIES MML	PART NUMBER <b>R302255014 XXX</b>
----------	-----------------	------------	-----------------------------------



### PANEL CUT OUT

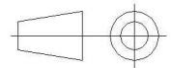


mm		
	Maxi	mini
<b>A</b>	<b>6.6</b>	<b>6.5</b>
<b>B</b>	<b>6.1</b>	<b>6.0</b>

Length=XXX	Step	Tolerance
30 to 100	10	±2
110 to 200		±3
225 to 300	25	±5
325 to 400		±10

E.g. XXX=090 means length is  $90 \pm 2$ , the part number is R302.255.014 090

All dimensions are in mm.



- \* 1 \* Connector A : **MML H2.5 PLUG (gold plated)**
  - \* 2 \* Connector B : **SMA JACK BULKHEAD PANEL SEALED (gold plated)**
  - \* 3 \* Cable **1.13/50S BLACK**
- Type

### ELECTRICAL CHARACTERISTICS

Impedance	<b>50</b>	$\Omega$
Frequency	<b>0-6</b>	GHz
Operating temperature	<b>-40/+90</b>	$^{\circ}C$
VSWR	<b>1.3** + 0.000</b>	x F(GHz) Maxi
Insertion loss	<b>0.92*</b>	$\sqrt{F}$ (GHz) dB Maxi
Voltage rating	<b>200</b>	Veff Maxi
Dielectric withstanding voltage	<b>300</b>	Veff mini
Insulation resistance	<b>500</b>	M $\Omega$ mini

### SPECIFICATION

Weight	<b>3.00*</b>	g
Cable retention	<b>4</b>	N mini
Mating life	<b>30</b>	Cycles

Others : \*\*VSWR up to 3GHz 1.3 max  
Up to 6GHz 1.5 max

Length	*Insertion loss(Maxi)	*Weight(Maxi)
30 to 100	0.92 dB	3.00 g
110 to 200	1.44 dB	3.69 g
225 to 400	2.48 dB	4.10 g

### Mating status

