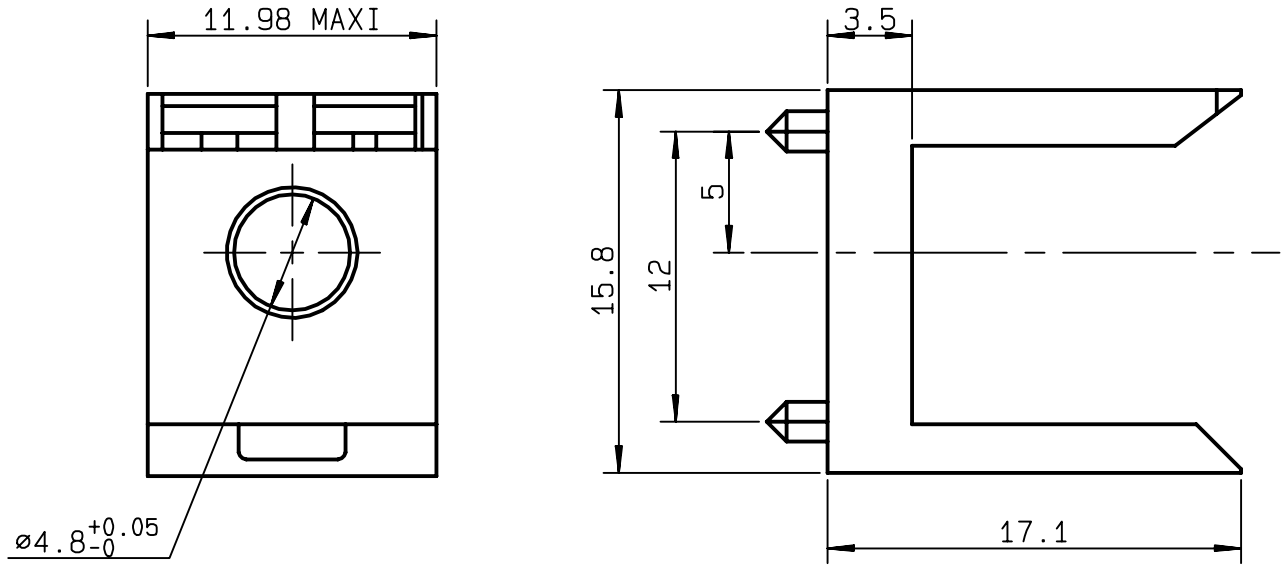


MALE HOUSING FOR GUIDE PIN

R280.420.310
SERIES ACC-COAX



NOMINAL IMPEDANCE	NA Ω	CABLES :		
FREQUENCY RANGE	NA GHz			
TEMPERATURE RATING	-25/+125 °C			
V.S.W.R	NA + x F(GHz)Maxi			
RF INSERTION LOSS	NA √F(GHz) dB Maxi			
VOLTAGE RATING	NA Veff Maxi			
DIELECTRIC WITHSTANDING VOLTAGE	NA Veff Mini			
INSULATION RESISTANCE	M ΩMini		OTHERS CHARACTERISTICS	
HERMETIC SEAL	NA Atm.cm ³ /s		CABLE RETENTION	NA N Mini
LEAKAGE (pressurized only)	NA		CENTER CONTACT RETENTION	
MECHANICAL DURABILITY	Cycles	Axial force - mating end	NA N Mini	
WEIGHT	1.2 gr	Axial force - opposite end	NA N Mini	
SPECIFICATION		Torque	NA cm.N Mini	
		RECOMMENDED TORQUES		
		Mating	NA cm.N	
		Panel nut	NA cm.N	
		Clamp nut	NA cm.N	

CONNECTOR PARTS:	MATERIALS	FINISH	(all values are given) in micrometers
BODY			
OUTER CONTACT			
CENTER CONTACT			
INSULATOR			
GASKET			
OTHERS PIECES	LIQUID CRISTAL POLYMER		

ISSUE 0230A00	CREATION DATE 03/12/1996	FILE PART-NUMBER
-------------------------	------------------------------------	------------------



BAFFERT

The information given here is subject to change without notice.
 Design changes may be in order to improve the product .

Connect to the future