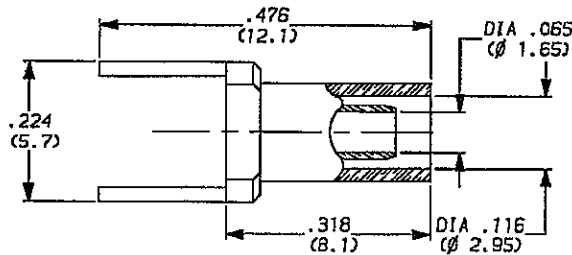


**FEEDTHROUGH FOR P.C.B CRIMPING TYPE  
CABLE 2,6/50**

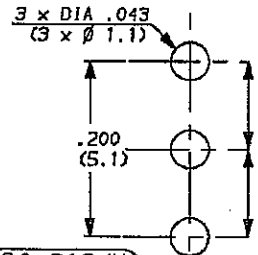
SERIES:

MCX

01/02



**MOUNTING HOLE**



(---) DIMENSIONS IN MM

WEIGHT 0 oz (..... g)

Cable : RG 174/U, RG 188/U, RG 316/U

**CHARACTERISTICS**

NOMINAL IMPEDANCE	50 $\Omega$	STANDARDISATION	-
FREQUENCY RANGE	0-3 GHz		-
TEMPERATURE RATING	-55 $\alpha$ +155 $^{\circ}$ C		-
VSWR	NA Max		-
RF INSERTION LOSS	NA dB Max	CABLE RETENTION	11.925 Lb Max 53 N Max
VOLTAGE RATING	900 Vrms	CENTER CONTACT RETENTION	
DIELECTRIC WITHSTANDING VOLTAGE	2000 Vrms	Axial force - mating end	0 Lb Max NA N Max
INSULATION RESISTANCE	NA Ma	Axial force - opposite end	0 Lb Max NA N Max
HERMETIC SEAL	NA cc/s cm <sup>3</sup> /s	Torque (Max)	0 Inch. oz NA cm.N
LEAKAGE (pressurized only)	0 psi NA kg/cm <sup>2</sup>	MATING TORQUE RECOMMENDED	0 Inch. Lb NA cm.N
-	-	-	-
-	-	-	-

**CONSTRUCTION**

CONNECTOR PARTS	MATERIALS	FINISH
Body	Brass	Tin
Outer contact	-	-
Center contact	-	-
Insulators	-	-
Ferrule	Brass	Nickel
-	-	-
-	-	-
-	-	-
-	-	-

ISSUE	REVISION No	DESCRIPTION	BY	DATE

Initiated on 03 11 88

Superseded on \_\_\_\_\_

The information given here is subject to change without notice. Design changes may be in order to improve the product.

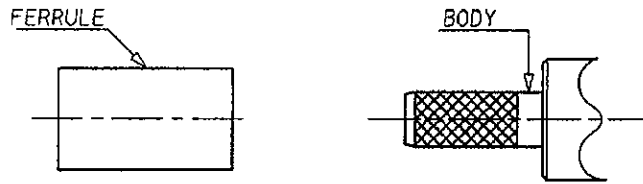


Panel cable receptacle, crimp-type  
- cable 2,6/50

SERIES:

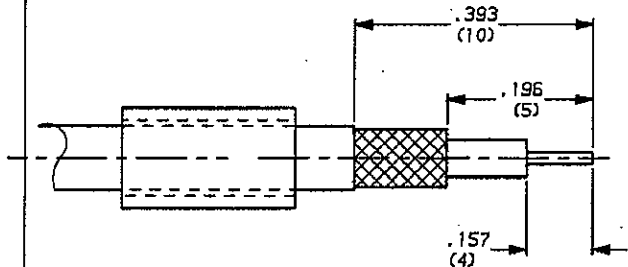
MCX

02/02



1-1 To slide ferrule on the cable

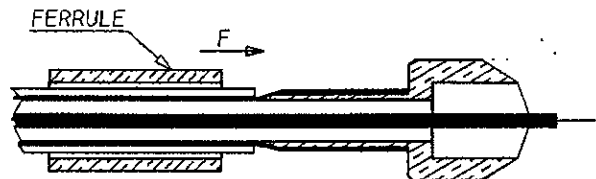
1-2 Cable stripping



2-1 To open the braid

2-2 To slide body under braid

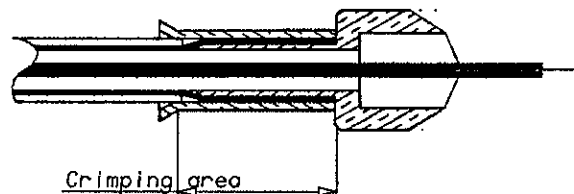
2-3 To slide the ferrule on braid  
according to F direction



3-3 To crimp the ferrule

crimping tool R 282 271

Hex : .127 (3,25)



ISSUE	REVISION No	DESCRIPTION	BY	DATE

Initiated on 29 08 88

The information given here is subject to change without notice. Design changes may be in order to improve the product.



Superseded on -----