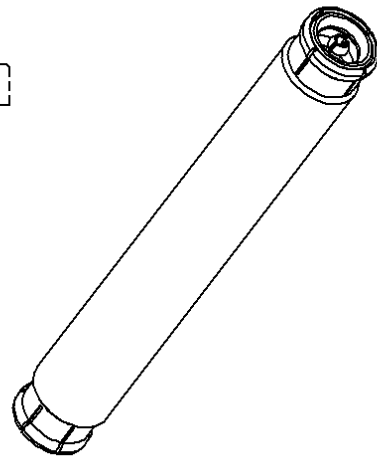
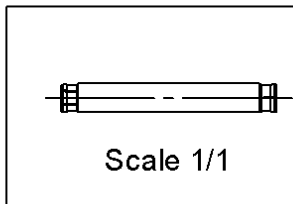
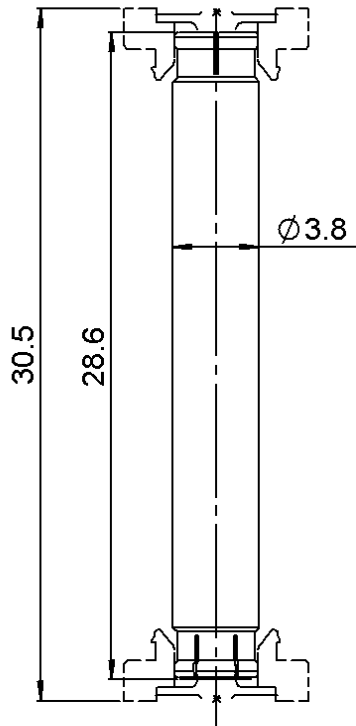


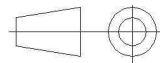
**MALE TO MALE ADAPT
BOARD TO BOARD 30.5MM**

R223.703.100

Series : MMBX



All dimensions are in mm.



COMPONENTS	MATERIALS	PLATING (µm)
BODY	BERYLLIUM COPPER	NPGR
CENTER CONTACT	BERYLLIUM COPPER	NPGR
OUTER CONTACT		
INSULATOR	PTFE	
GASKET		
OTHERS PARTS		
-	-	-
-	-	-

Issue : 0815 A

In the effort to improve our products, we reserve the right to make changes judged to be necessary.



PRELIMINARY

**MALE TO MALE ADAPT
BOARD TO BOARD 30.5MM**

R223.703.100

Series : MMBX

PACKAGING

SPECIFICATION

Standard	Unit	Other
100	'W' option	Contact us

ELECTRICAL CHARACTERISTICS

ENVIRONMENTAL

Impedance **50** Ω
 Frequency **0-12.4** GHz
 VSWR **1.20*** + **0.0000** x F(GHz) Maxi
 Insertion loss **0.18** √F(GHz) dB Maxi
 RF leakage - (**100**** - F(GHz)) dB Maxi
 Voltage rating **330** Veff Maxi
 Dielectric withstanding voltage **500** Veff mini
 Insulation resistance **1000** MΩ mini

Operating temperature **-55/+155** ° C
 Hermetic seal **NA** Atm.cm3/s
 Panel leakage **NA**

OTHER CHARACTERISTICS

Assembly instruction

Others :
 *to 6 GHz
 ** Interface MMBX only up to 2.5 GHz
 PCB to PCB -50dB up to 2.5Ghz

MECHANICAL CHARACTERISTICS

Center contact retention
 Axial force – Mating end **10** N mini
 Axial force – Opposite end **10** N mini
 Torque **NA** N.cm mini

Recommended torque
 Mating **NA** N.cm
 Panel nut **NA** N.cm

Mating life **100** Cycles mini
 Weight **1.4200** g

Issue : 0815 A

In the effort to improve our products, we reserve the right to make changes judged to be necessary.



PRELIMINARY