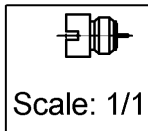
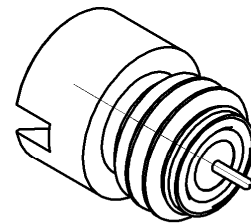
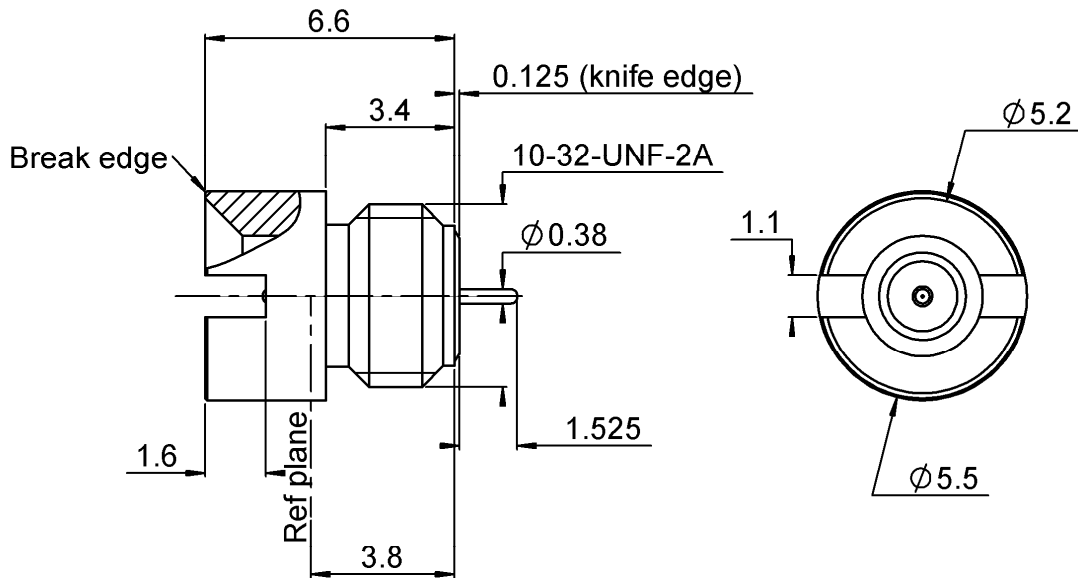
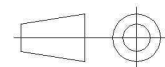


|          |                 |            |                        |
|----------|-----------------|------------|------------------------|
| PAGE 1/3 | ISSUE 20-06-18A | SERIES SMP | PART NUMBER R222645760 |
|----------|-----------------|------------|------------------------|



All dimensions are in mm. Tolerances according ISO 2768 m-H



| COMPONENTS     | MATERIALS              | PLATING (µm)                      |
|----------------|------------------------|-----------------------------------|
| Body           | <b>STAINLESS STEEL</b> | <b>GOLD 1.27 OVER NICKEL 2.54</b> |
| Center contact | <b>DILVER P1</b>       | <b>GOLD OVER NICKEL</b>           |
| Outer contact  |                        |                                   |
| Insulator      | <b>CORNING 7070</b>    |                                   |
| Gasket         |                        |                                   |
| Others parts   |                        |                                   |
| -              | -                      | -                                 |
| -              | -                      | -                                 |

|          |                 |            |                        |
|----------|-----------------|------------|------------------------|
| PAGE 2/3 | ISSUE 20-06-18A | SERIES SMP | PART NUMBER R222645760 |
|----------|-----------------|------------|------------------------|

**PACKAGING**

| Standard | Unit       | Other      |
|----------|------------|------------|
| 100      | Contact us | Contact us |

**ELECTRICAL CHARACTERISTICS**

|                                 |                |               |                  |
|---------------------------------|----------------|---------------|------------------|
| Impedance                       |                | <b>50</b>     | Ω                |
| Frequency                       |                | <b>0-26.5</b> | GHz              |
| VSWR                            | <b>1.07*</b> + | <b>0,0100</b> | x F(GHz) Maxi    |
| Insertion loss                  |                | <b>0.045</b>  | √F(GHz) dB Maxi  |
| RF leakage                      | - (            | <b>90*</b>    | - F(GHz) dB Maxi |
| Voltage rating                  |                | <b>335</b>    | Veff Maxi        |
| Dielectric withstanding voltage |                | <b>500</b>    | Veff mini        |
| Insulation resistance           |                | <b>5000</b>   | MΩ mini          |

**ENVIRONMENTAL**

|                       |                 |           |
|-----------------------|-----------------|-----------|
| Operating temperature | <b>-65/+165</b> | °C        |
| Hermetic seal         | <b>10-8</b>     | Atm.cm3/s |
| Panel leakage         | <b>NA</b>       |           |

**MECHANICAL CHARACTERISTICS**

|                            |  |               |             |
|----------------------------|--|---------------|-------------|
| Center contact retention   |  |               |             |
| Axial force – Mating End   |  | <b>6.7</b>    | N mini      |
| Axial force – Opposite end |  | <b>6.7</b>    | N mini      |
| Torque                     |  |               | N.cm mini   |
| Recommended torque         |  |               |             |
| Mating                     |  | <b>NA</b>     | N.cm        |
| Panel nut                  |  | <b>85</b>     | N.cm        |
| Mating life                |  | <b>1000</b>   | Cycles mini |
| Weight                     |  | <b>0,7500</b> | g           |

**SPECIFICATION**

**OTHER CHARACTERISTICS**

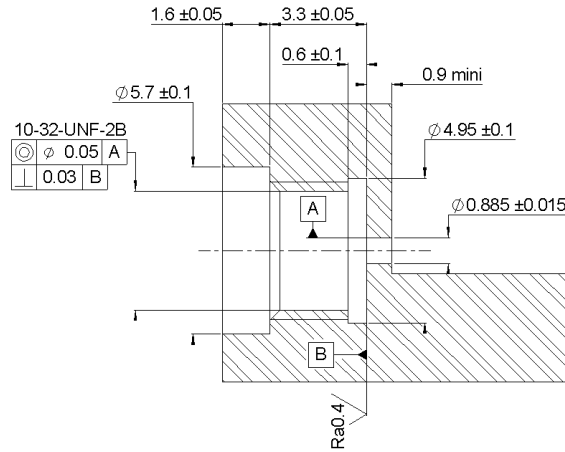
Assembly instruction:

Others:

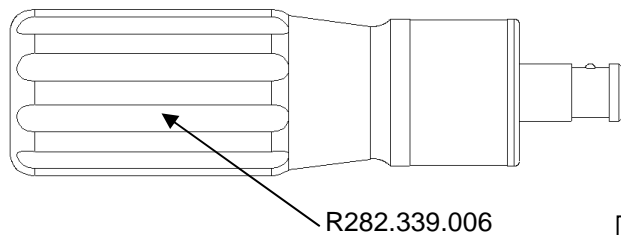
**\*Coaxial transmission line only**

|          |                 |            |                        |
|----------|-----------------|------------|------------------------|
| PAGE 3/3 | ISSUE 20-06-18A | SERIES SMP | PART NUMBER R222645760 |
|----------|-----------------|------------|------------------------|

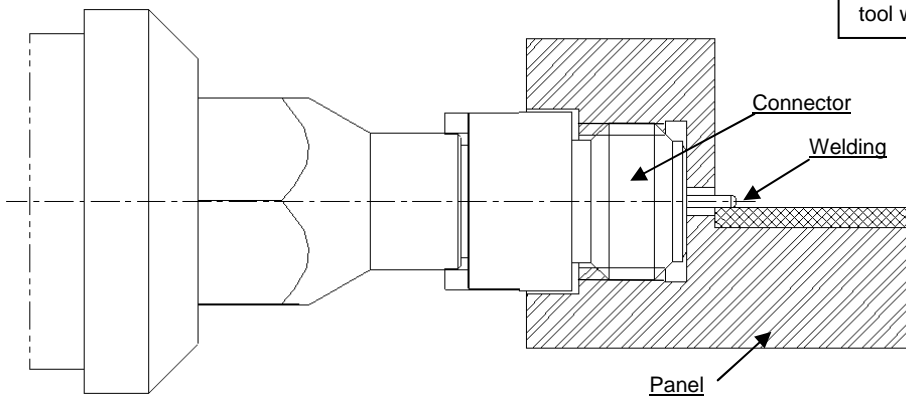
PANEL DRILLING



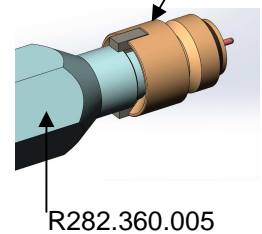
INSTALLATION



Slide the hexagonal tip tool in bottom against the torque screw driver



Slide the connector onto the hexagonal tip tool with slot orientation



Screw the connector into the housing with the torque screw driver. Tighten the connector up to 85 Ncm ±5 Ncm to garanty hermeticity 10-8cc/sec. Then solder the pin on the track. Beware there is not too much solder.

Important: for maximum RF characteristics the link track/pin must be as thin as possible. We advise you to respect rigorously the 0.5±0.1 dimension by welding accurately the bead pin directly on the track.

