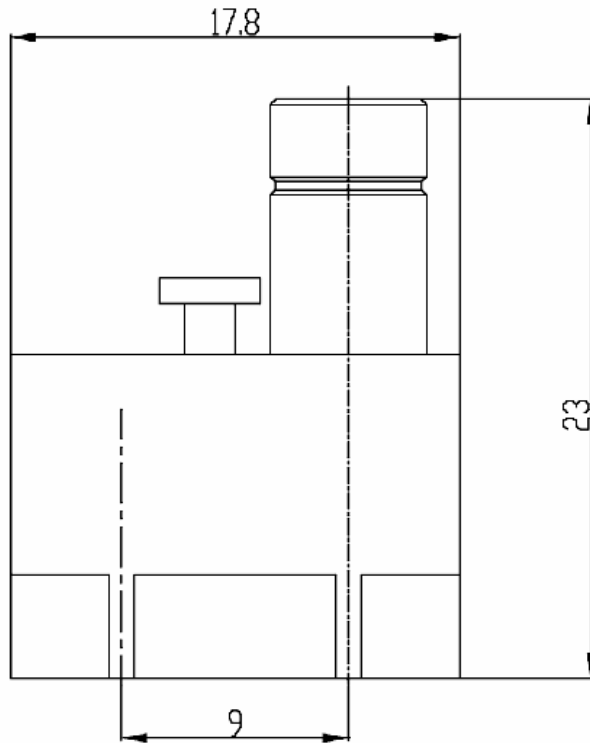


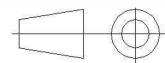
**U LINK FEMALE-FEMALE
PITCH 9MM WITH TEST PORT PACK 50**

R214.798.723

Series : UHDC 43



All dimensions are in mm.



COMPONENTS	MATERIALS	PLATING (µm)
BODY	ZAMAK	NICKEL
CENTER CONTACT	BRONZE	GOLD
OUTER CONTACT	BRASS	GOLD
INSULATOR	PTFE	
GASKET	-	
OTHERS PARTS	-	
-	-	
-	-	

Issue : 1132 C

In the effort to improve our products, we reserve the right to make changes judged to be necessary.



**U LINK FEMALE-FEMALE
PITCH 9MM WITH TEST PORT PACK 50**

R214.798.723

Series : UHDC 43

PACKAGING

Standard	Unit	Other
50	-	Contact us

SPECIFICATION

ELECTRICAL CHARACTERISTICS

Impedance		75 Ω
Frequency		0-3 GHz
VSWR	NA +	0,0000 x F(GHz) Maxi
Insertion loss		NA √F(GHz) dB Maxi
RF leakage	- (NA - F(GHz)) dB Maxi
Voltage rating		500 Veff Maxi
Dielectric withstanding voltage		1500 Veff mini
Insulation resistance		5000 MΩ mini

ENVIRONMENTAL

Operating temperature	-40/+100 ° C
Hermetic seal	- Atm.cm3/s
Panel leakage	-

OTHER CHARACTERISTICS

Assembly instruction **NA**

Others :
-

MECHANICAL CHARACTERISTICS

Center contact retention		
Axial force – Mating end	22	N mini
Axial force – Opposite end	-	N mini
Torque	-	N.cm mini
Recommended torque		
Mating	-	N.cm
Panel nut	-	N.cm
Mating life	0	Cycles mini
Weight	8,1000	g

Issue : 1132 C

In the effort to improve our products, we reserve the right to make changes judged to be necessary.

