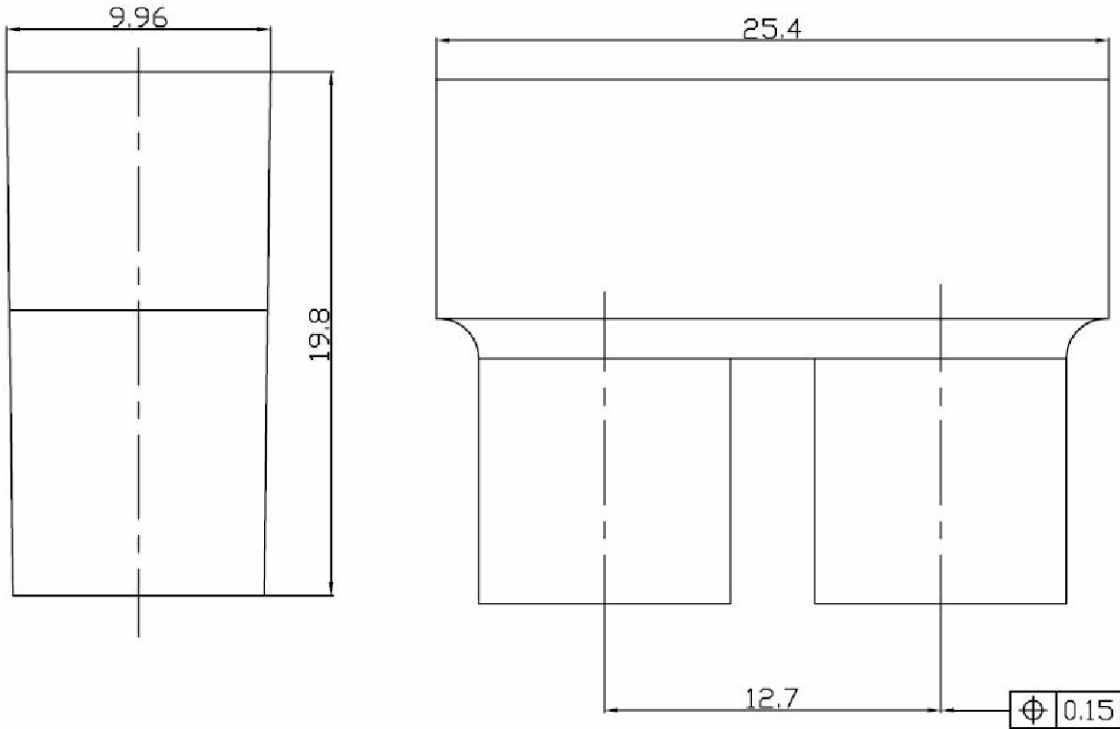


'U' LINK FEMALE-FEMALE PITCH 12.7

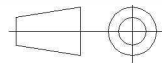
**R214.790.703**

**PACK 50**

Series : T43



All dimensions are in mm.



COMPONENTS	MATERIALS	PLATING (µm)
<b>BODY</b>	<b>ZAMAK</b>	<b>NICKEL</b>
<b>CENTER CONTACT</b>	<b>BRONZE</b>	<b>GOLD OVER NICKEL</b>
<b>OUTER CONTACT</b>	<b>BRASS</b>	<b>GOLD OVER NICKEL</b>
<b>INSULATOR</b>	<b>PTFE</b>	
<b>GASKET</b>	-	
<b>OTHERS PARTS</b>	-	
-	-	
-	-	

Issue : 1227 C

In the effort to improve our products, we reserve the right to make changes judged to be necessary.



'U' LINK FEMALE-FEMALE PITCH 12.7

**R214.790.703**

**PACK 50**

Series : T43

**PACKAGING**

**SPECIFICATION**

Standard	Unit	Other
<b>50</b>	-	<b>Contact us</b>

**ELECTRICAL CHARACTERISTICS**

**ENVIRONMENTAL**

Impedance		<b>75</b> Ω
Frequency		<b>0-3</b> GHz
VSWR	<b>NA</b> +	<b>0,0000</b> x F(GHz) Maxi
Insertion loss		<b>NA</b> √F(GHz) dB Maxi
RF leakage	- (	<b>NA</b> - F(GHz)) dB Maxi
Voltage rating		<b>500</b> Veff Maxi
Dielectric withstanding voltage		<b>1500</b> Veff mini
Insulation resistance		<b>5000</b> MΩ mini

Operating temperature	<b>-40/+100</b> ° C
Hermetic seal	<b>NA</b> Atm.cm3/s
Panel leakage	<b>NA</b>

**OTHER CHARACTERISTICS**

Assembly instruction

Others :

**MECHANICAL CHARACTERISTICS**

Center contact retention		
Axial force – Mating end	<b>22</b>	N mini
Axial force – Opposite end	<b>NA</b>	N mini
Torque	<b>NA</b>	N.cm mini
Recommended torque		
Mating	<b>NA</b>	N.cm
Panel nut	<b>NA</b>	N.cm
Mating life	<b>100</b>	Cycles mini
Weight	<b>22,0000</b>	g

Issue : 1227 C

In the effort to improve our products, we reserve the right to make changes judged to be necessary.

