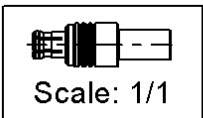
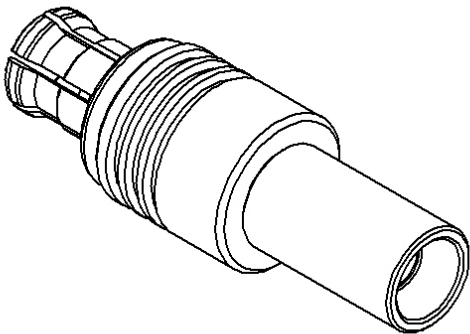
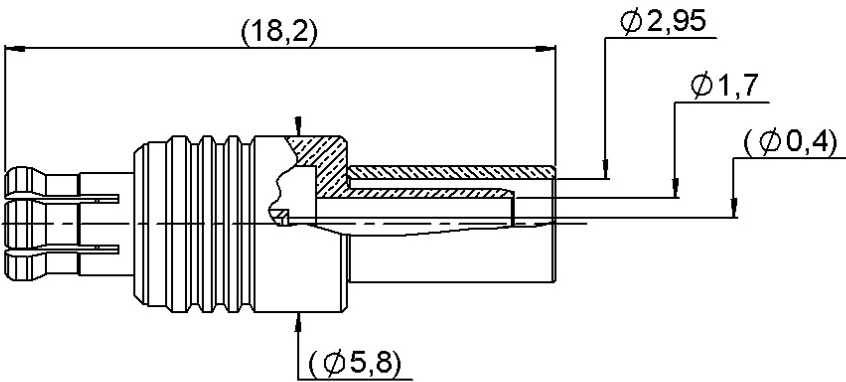
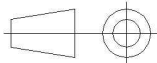


PAGE 1/3	ISSUE 03-04-24A	SERIES MCX 75	PART NUMBER R213082007
----------	--------------------	---------------	------------------------



All dimensions are in mm. Tolerances according ISO 2768 m-H



COMPONENTS	MATERIALS	PLATING (µm)
Body	BRASS	BBR
Center contact	BRASS	GOLD OVER NICKEL
Outer contact	BERYLLIUM COPPER	BBR
Insulator	PTFE	
Gasket		
Others parts	BRASS	BBR
-	-	-
-	-	-

PAGE 2/3

ISSUE  
03-04-24A

SERIES MCX 75

PART NUMBER R213082007

### PACKAGING

Standard	Unit	Other
100	Contact us	Contact us

### ELECTRICAL CHARACTERISTICS

Impedance	75	Ω
Frequency	0-6	GHz
VSWR	1.05 + 0,0200	x F(GHz) Maxi
Insertion loss	0.06	√F(GHz) dB Maxi
RF leakage	- (NA	- F(GHz)) dB Maxi
Voltage rating	335	Veff Maxi
Dielectric withstanding voltage	750	Veff mini
Insulation resistance	1000	MΩ mini

### MECHANICAL CHARACTERISTICS

Center contact retention		
Axial force – Mating End	10	N mini
Axial force – Opposite end	10	N mini
Torque	NA	N.cm mini

Recommended torque		
Mating	NA	N.cm
Panel nut	NA	N.cm
Clamp nut	NA	N.cm
A/F clamp nut	0,0000	mm

Mating life	500	Cycles mini
Nominal Weight (Add +15% for max weight)	1,4000	g

### ENVIRONMENTAL

Operating temperature	-55/+155	°C
Hermetic seal	NA	Atm.cm3/s
Panel leakage	NA	

### SPECIFICATION

### CABLE ASSEMBLY

Stripping	a	b	c	d	e	f
mm	2,3000	5,5000	10,3000	0,0000	8,0000	0,0000

Assembly instruction:

Recommended cable(s)

Characteristics indicated on this data sheet are those that can be achieved with the highest performance cable. Intrinsic limitations of the cable may diminish the performance of the assembly

Cable retention

- pull off	53	N mini
- torque	NA	N.cm

### TOOLING

Part Number	Description	Other
R282271000	PINCE SERT CAR 0.72 H3.25-3.84	

### OTHER CHARACTERISTICS

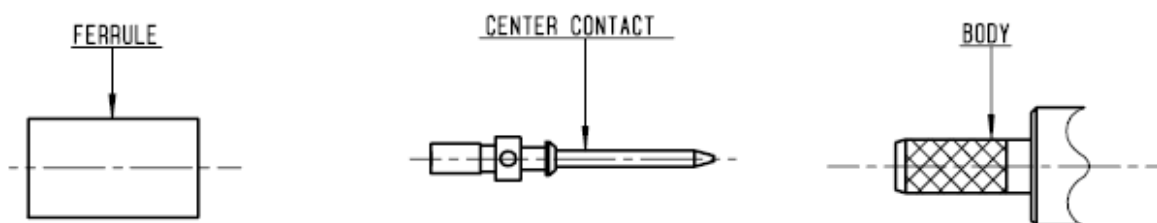
-

PAGE 3/3

ISSUE  
03-04-24A

SERIES MCX 75

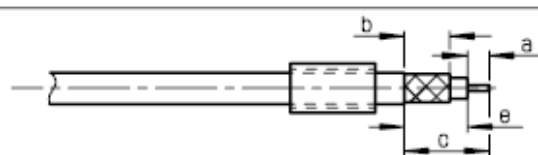
PART NUMBER R213082007



①

Slide ferrule onto cable .  
Strip the cable .

-  
-

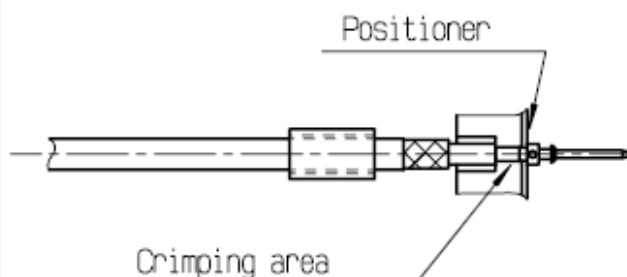


Stripping	a	b	c	d	e
inch	0.091	0.217	0.406	0	0.315
mm	2.3	5.5	10.3		8

②

Crimp the center contact with the crimping tool R282.271.000 square .028 (carre 0.72)

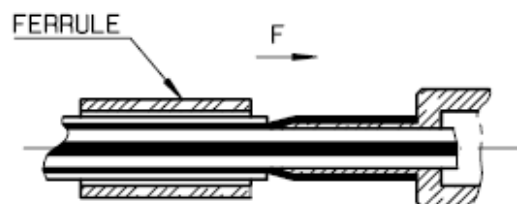
-  
-  
-  
-  
-  
-



③

Open the braid  
Slide body under braid  
Slide ferrule over the braid  
(In direction F)

-



④

Crimp the ferrule with crimping tool R282.271.000 ( Hex. : .127 ) (3.25)

-  
-  
-  
-

