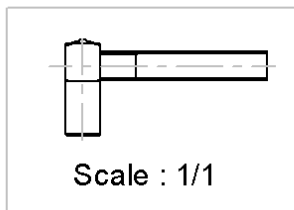
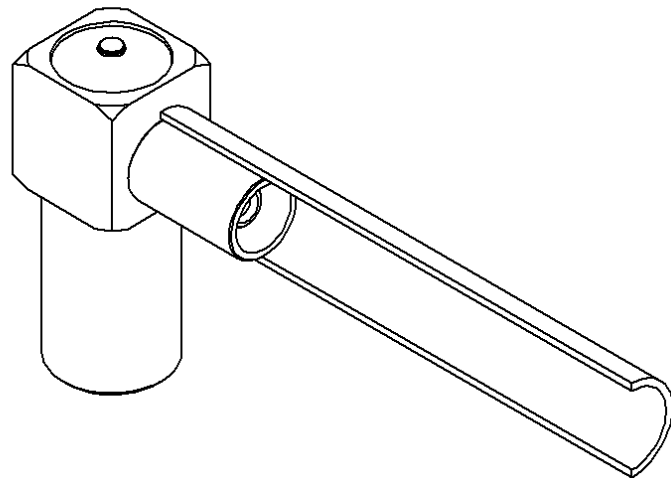
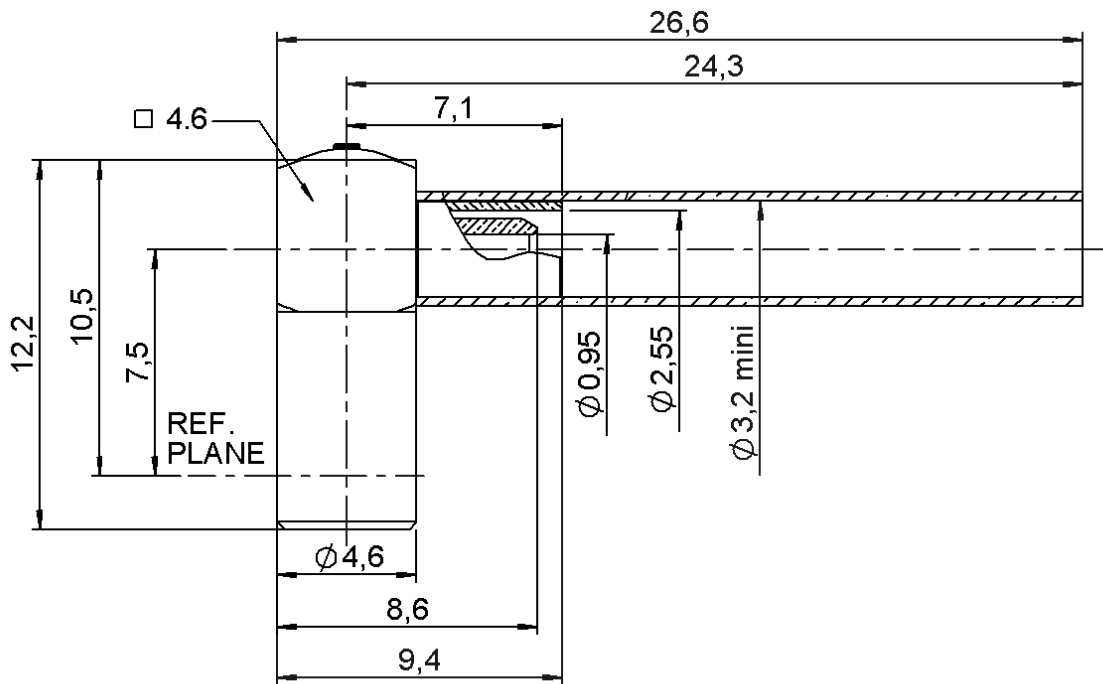
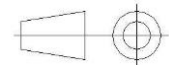


| | | | |
|----------|-----------------|-------------|------------------------|
| PAGE 1/3 | ISSUE 23-02-16B | SERIES SSMB | PART NUMBER R203173170 |
|----------|-----------------|-------------|------------------------|



All dimensions are in mm.



| COMPONENTS | MATERIALS | PLATING (µm) |
|----------------|-------------------------|-------------------------------|
| Body | BRASS | GOLD 0.5 OVER NICKEL 2 |
| Center contact | BERYLLIUM COPPER | GOLD 1.3 OVER NICKEL2 |
| Outer contact | BERYLLIUM COPPER | GOLD 0.5 OVER NICKEL 2 |
| Insulator | PTFE | |
| Gasket | - | |
| Others parts | BRASS | GOLD 0.2 OVER NICKEL 2 |
| - | - | - |
| - | - | - |

| | | | |
|-----------------|------------------------|--------------------|-------------------------------|
| PAGE 2/3 | ISSUE 23-02-16B | SERIES SSMB | PART NUMBER R203173170 |
|-----------------|------------------------|--------------------|-------------------------------|

PACKAGING

| | | |
|------------------------|---------------------------|----------------------------|
| Standard 100 | Unit Contact us | Other Contact us |
|------------------------|---------------------------|----------------------------|

ELECTRICAL CHARACTERISTICS

| | | |
|---------------------------------|----------------------|------------------|
| Impedance | 50 | Ω |
| Frequency | 0-4 | GHz |
| VSWR | 1.30 + 0,0200 | x F(GHz) Maxi |
| Insertion loss | 0.30 | √F(GHz) dB Maxi |
| RF leakage | - (NA) | - F(GHz) dB Maxi |
| Voltage rating | 175 | Veff Maxi |
| Dielectric withstanding voltage | 500 | Veff mini |
| Insulation resistance | 5000 | MΩ mini |

MECHANICAL CHARACTERISTICS

| | | |
|----------------------------|---------------|-------------|
| Center contact retention | | |
| Axial force – Mating End | 8 | N mini |
| Axial force – Opposite end | 8 | N mini |
| Torque | NA | N.cm mini |
| Recommended torque | | |
| Mating | NA | N.cm |
| Panel nut | NA | N.cm |
| Clamp nut | NA | N.cm |
| A/F clamp nut | 0,0000 | mm |
| Mating life | 500 | Cycles mini |
| Weight | 0,0000 | g |

ENVIRONMENTAL

| | | |
|-----------------------|-----------------|-----------|
| Operating temperature | -65/+165 | °C |
| Hermetic seal | NA | Atm.cm3/s |
| Panel leakage | NA | |

SPECIFICATION

CABLE ASSEMBLY

| Stripping | a | b | c | d | e | f |
|-----------|----------|------------|------------|----------|------------|----------|
| mm | 2 | 4,5 | 7,5 | 0 | 5,5 | 0 |

Assembly instruction:

Recommended cable(s)

- RG 178**
- RG 196**
- RG 178 LC**
- KX 21**

Characteristics indicated on this data sheet are those that can be achieved with the highest performance cable. Intrinsic limitations of the cable may diminish the performance of the assembly

Cable retention

| | | |
|------------|-----------|--------|
| - pull off | 54 | N mini |
| - torque | NA | N.cm |

TOOLING

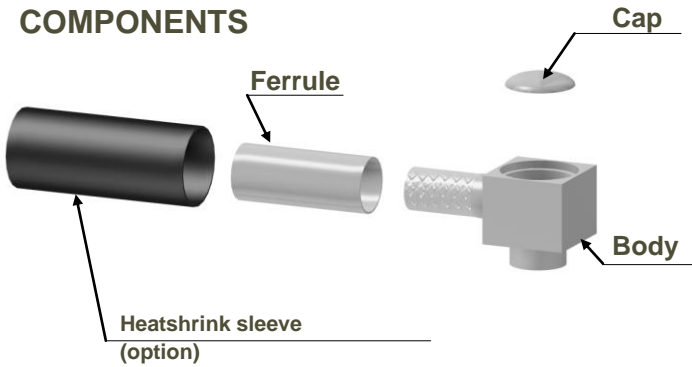
| Part Number | Description | Hexagon |
|-------------|---------------------------|---------|
| R282235011 | CRIMPING DIES M22520/5-11 | 2.67 |
| R282235003 | CRIMPING DIES M22520/5-03 | 2.67 |
| R282293000 | CRIMPING TOOL M22520/5-01 | - |

OTHER CHARACTERISTICS

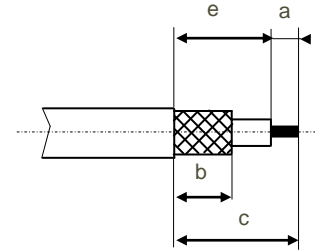
-

| | | | |
|----------|-----------------|-------------|------------------------|
| PAGE 3/3 | ISSUE 23-02-16B | SERIES SSMB | PART NUMBER R203173170 |
|----------|-----------------|-------------|------------------------|

COMPONENTS



STRIPPING DIMENSIONS



1

Slide the heatshrink sleeve onto the cable (Option).
Slide the ferrule onto the cable.
Strip the cable.

2

Fan the braid.

3

Push the connector body under the braid.
Slide the ferrule over the braid.

4

Crimp the ferrule with crimping tool (see connector TDS).
Solder the inner conductor.

5

Place the cap into the body.

6

Press on the cap flush or slightly below the surface of the body assembly.
Slide the sleeve over the ferrule and heatshrink it in place (Option).