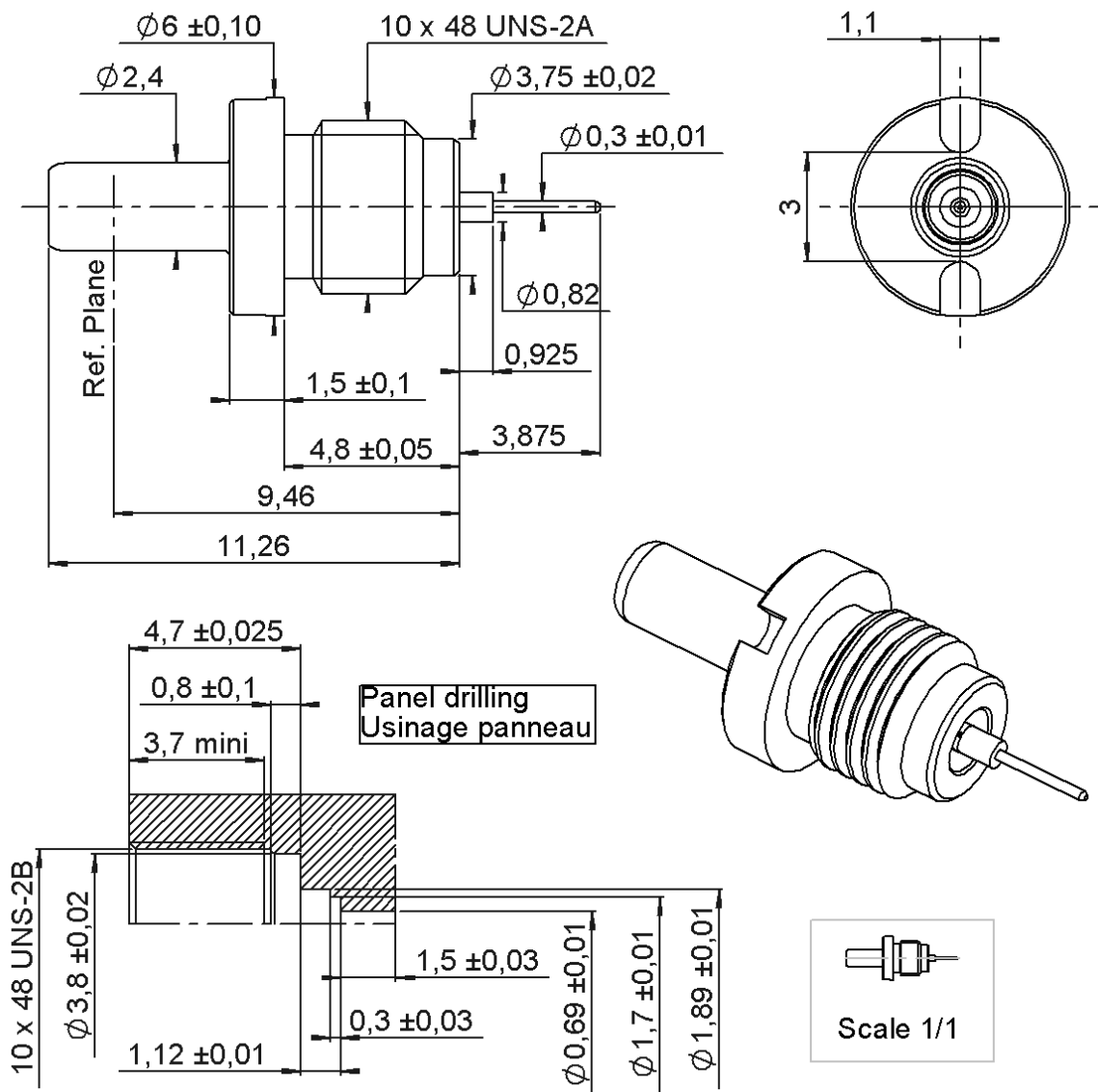


PAGE 1/6

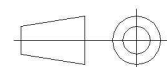
ISSUE
18-03-25A

SERIES MCC #12

PART NUMBER R199012524



All dimensions are in mm. Tolerances according ISO 2768 m-H



COMPONENTS	MATERIALS	PLATING (μm)
Body	BRONZE	GOLD 1.3 OVER NICKEL2
Center contact	BERYLLIUM COPPER	GOLD 1.3 OVER NICKEL2
Outer contact		
Insulator	PTFE+PEEK	
Gasket		
Others parts	BERYLLIUM COPPER	GOLD 0.5 OVER NICKEL 2
-	-	-
-	-	-

PAGE 2/6

ISSUE
18-03-25A

SERIES **MCC #12**

PART NUMBER **R199012524**

PACKAGING

Standard	Unit	Other
100	Contact us	Contact us

ELECTRICAL CHARACTERISTICS

Impedance	50	Ω
Frequency	DC-40	GHz
VSWR	* + 0,000	x F(GHz) Maxi
Insertion loss	0.1	\sqrt{F} (GHz) dB Maxi
RF leakage	- (**80	- F(GHz)) dB Maxi
Voltage rating	335	Veff Maxi
Dielectric withstanding voltage	1000	Veff mini
Insulation resistance	5000	M Ω mini

ENVIRONMENTAL

Operating temperature	-65/+165	°C
Hermetic seal	NA	Atm.cm3/s
Panel leakage	NA	

MECHANICAL CHARACTERISTICS

Center contact retention		
Axial force – Mating End	6.7	N mini
Axial force – Opposite end	6.7	N mini
Torque	NA	N.cm mini

SPECIFICATION

Recommended torque		
Mating	NA	N.cm
Panel nut	90	N.cm

OTHER CHARACTERISTICS

Mating life	500	Cycles mini
Nominal Weight (Add +15% for max weight)	1,050	g

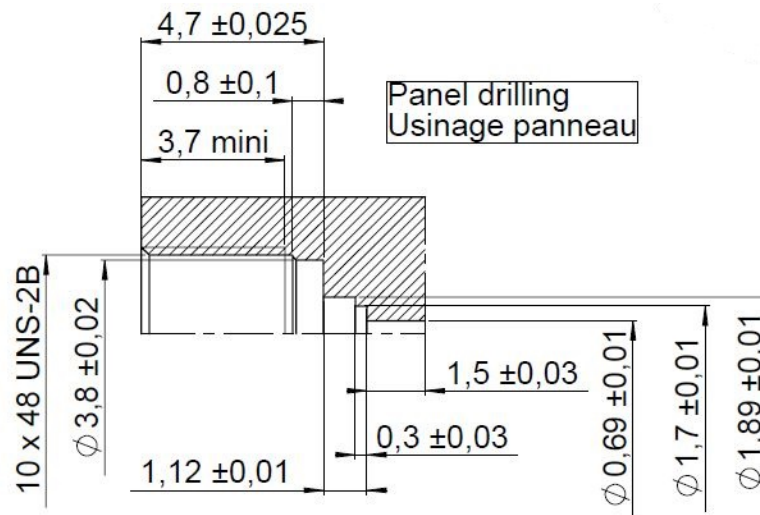
Assembly instruction:

Others:

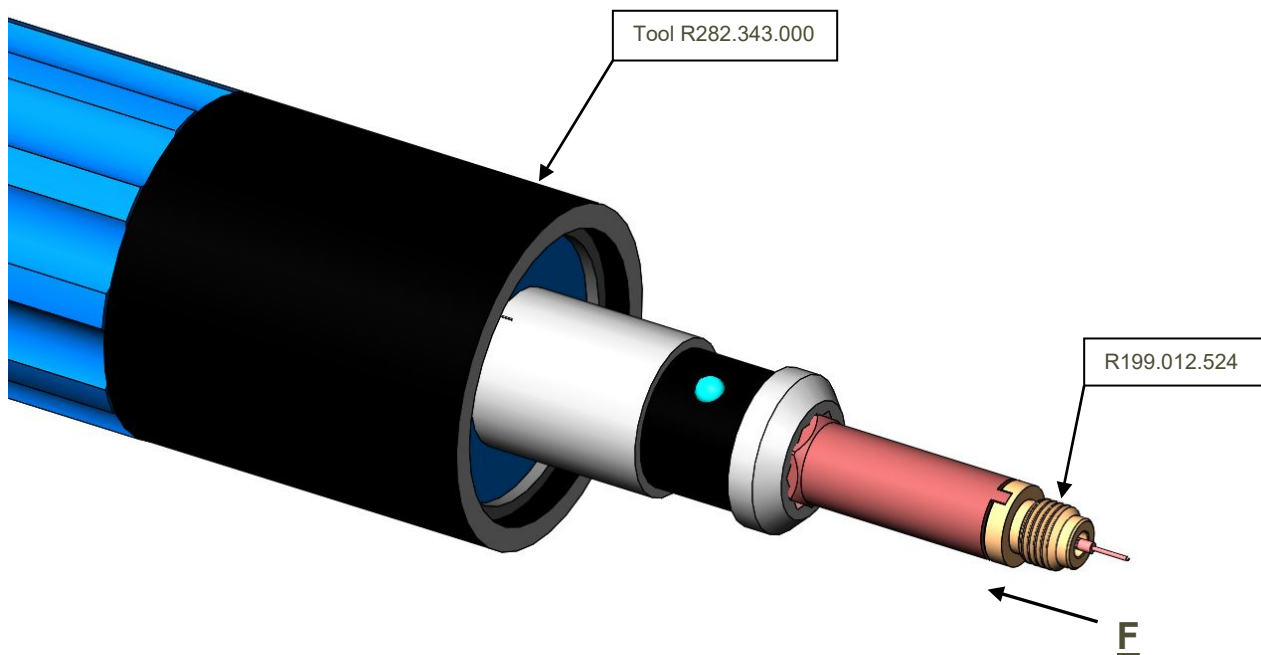
***VSWR@DC-40GHz: 1.10**

**** 3 to 26GHz: -65dB**

ADDITIONNAL INFORMATIONS
MOUNTING AND REPLACEMENT INSTRUCTIONS



- 1) Connector must be screwed or unscrewed with adapted torque driver R282.343.000, recommended coupling torque: 90N.cm.
- 2) Slide on the connector in F direction until it stops against the tool.



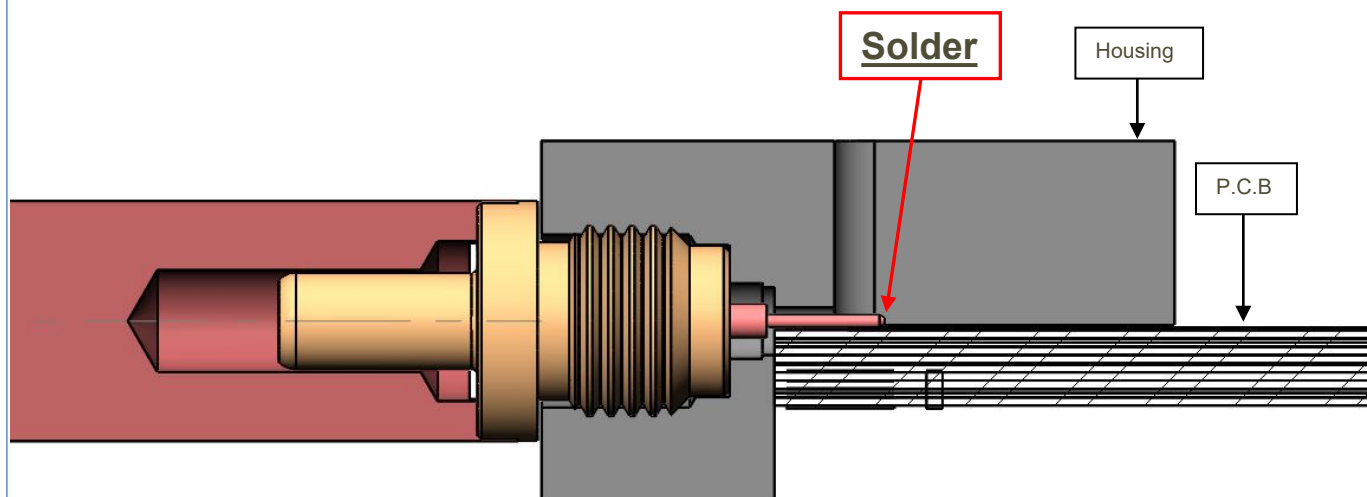
PAGE 4/6

ISSUE
18-03-25A

SERIES **MCC #12**

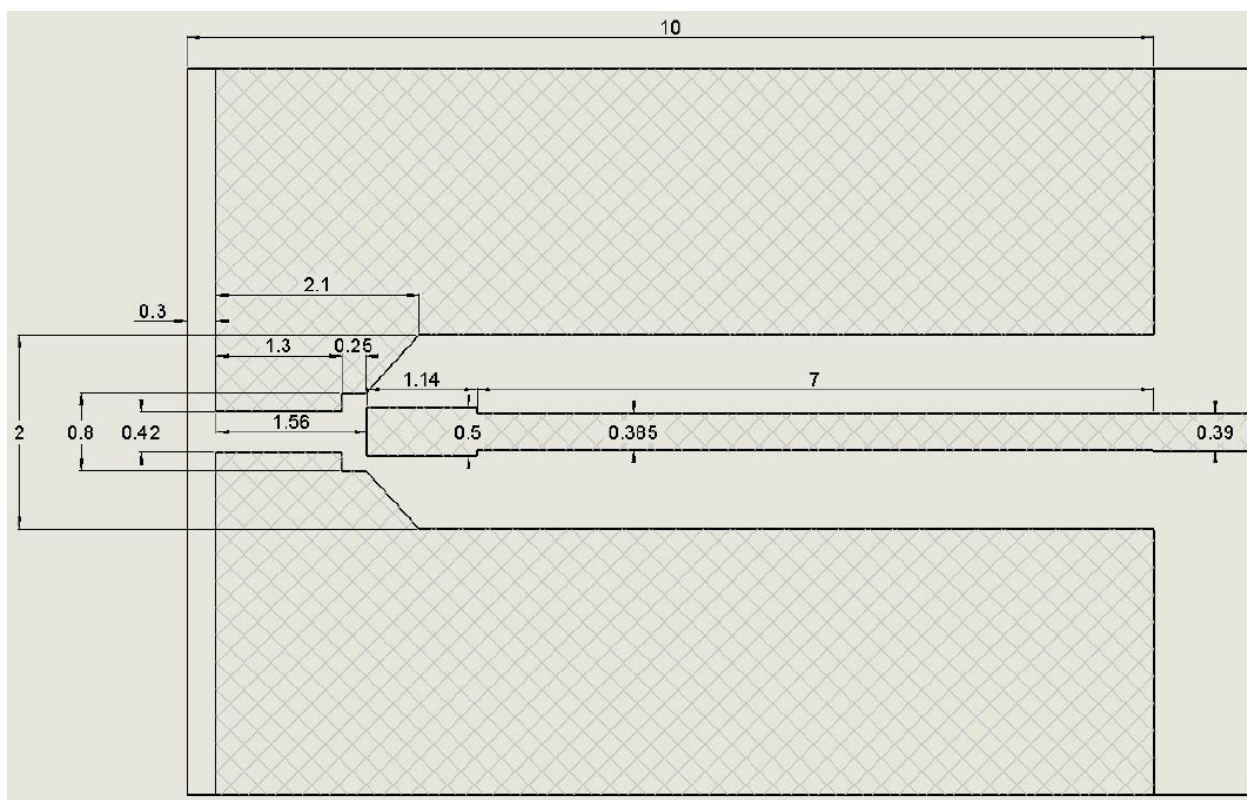
PART NUMBER **R199012524**

- 1) Screw the whole into the housing until activation of the torque driver.
- 2) Withdraw the tool and solder the center contact.



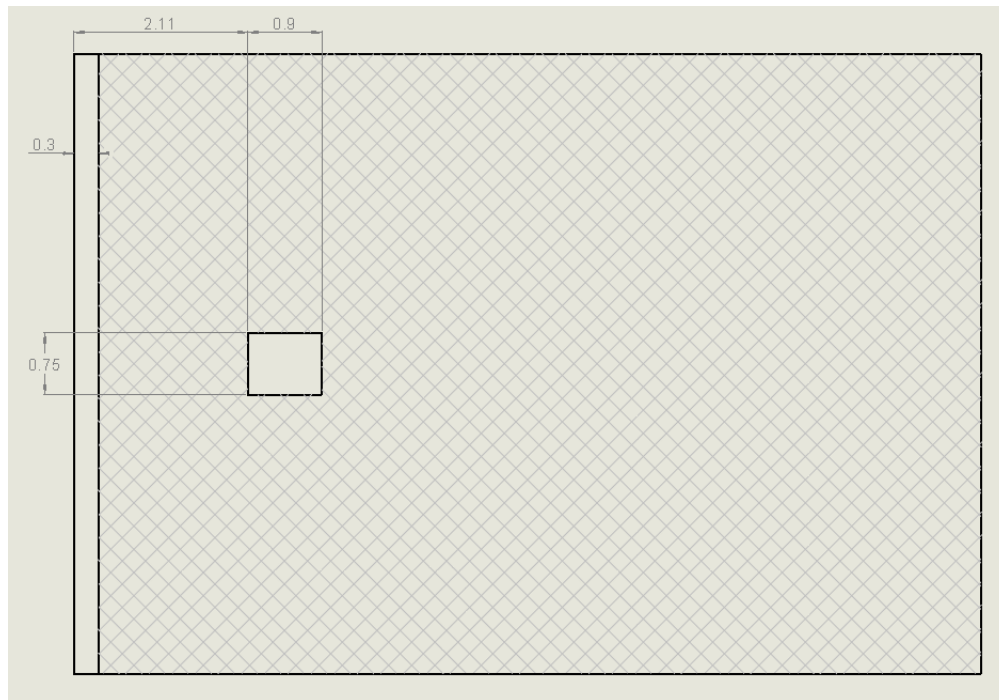
Definition of P.C.B

PCB Layer 1

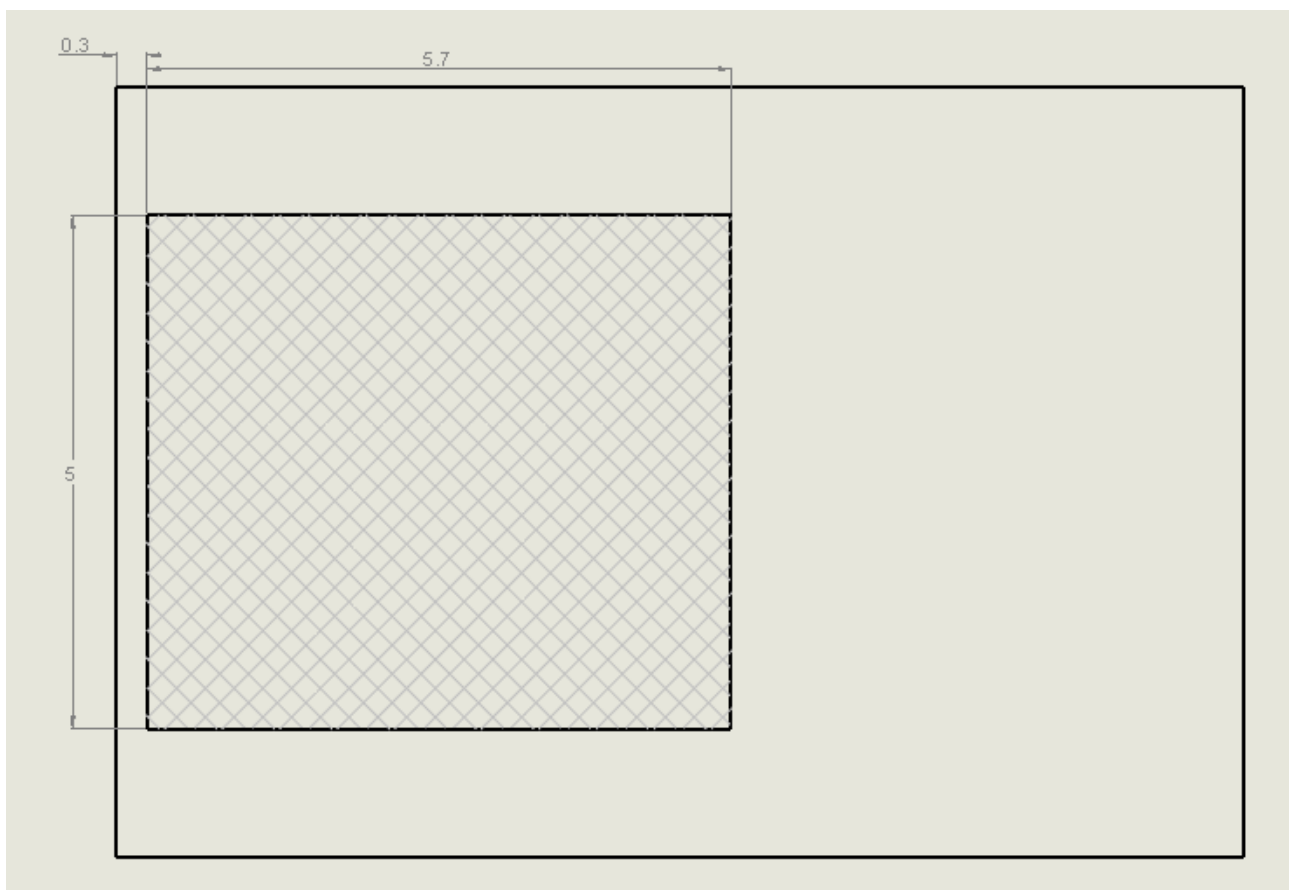


PAGE 5/6	ISSUE 18-03-25A	SERIES MCC #12	PART NUMBER R199012524
----------	--------------------	----------------	------------------------

PCB Layer 2



PCB Layer 3 at 10



PAGE 6/6

ISSUE
18-03-25A

SERIES **MCC #12**

PART NUMBER **R199012524**

Metallic holes

