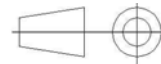
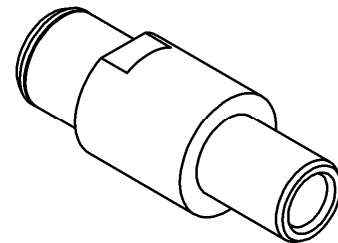
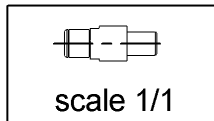
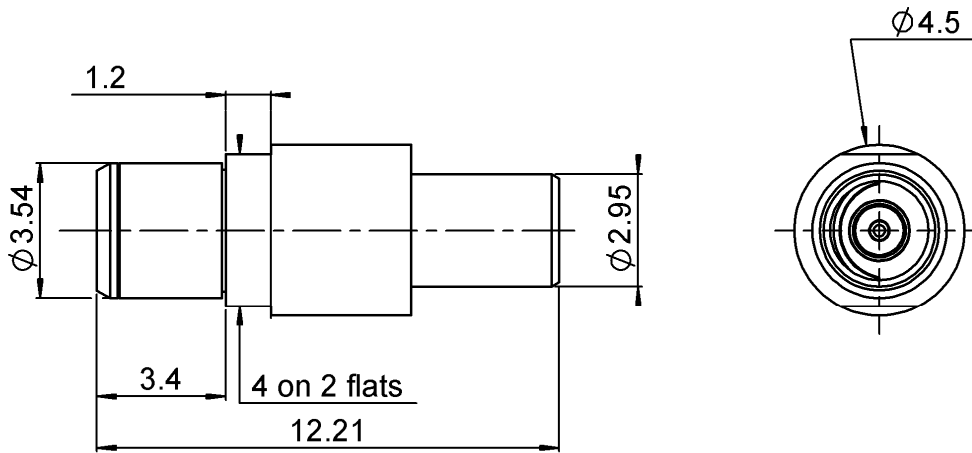


MOEBIUS MALE-MC CARD FEMALE

R191.860.080

Série : ADAPTOR



All dimensions are in mm.

COMPONENTS	MATERIALS	PLATING (µm)
BODY	BRASS	NPGR
CENTER CONTACT	BERYLLIUM COPPER	NPGR
OUTER CONTACT	-	-
INSULATOR	PTFE	-
GASKET	-	-
OTHERS PARTS	BERYLLIUM COPPER	NPGR
-	-	-
-	-	-

Issue : 0823 A

In the effort to improve our products, we reserve the rights to make changes judged to be necessary.



MOEBIUS MALE-MC CARD FEMALE

R191.860.080

Série : ADAPTOR

PACKAGING

SPECIFICATION

Standard	Unit	Other
100	'W' option	Contact us

ELECTRICAL CHARACTERISTICS

ENVIRONMENTAL

Impedance	50	Ω
Frequency	0~6	GHz
VSWR	*1.25 + 0.0000	x F(GHz) Maxi
Insertion loss	0.3	\sqrt{F} (GHz) dB Maxi
RF leakage	- (- F(GHz)) dB Maxi
Voltage rating	170	Veff Maxi
Dielectric withstanding voltage	500	Veff mini
Insulation resistance	3000	M Ω mini

Operating	-40~+110	$^{\circ}$ C
Hermetic seal		Atm.cm3/s
Panel leakage	NA	

MECHANICAL CHARACTERISTICS

OTHER CHARACTERISTICS

Center contact retention		
Axial force – Mating end	2	N mini
Axial force – Opposite end	2	N mini
Torque	NA	N.cm mini

40000 cycles for Moebius
* at 3GHz

Recommended torque		
Mating	MC-CARD	0 N.cm
	MOEBIUS	0 N.cm
		0 N.cm
Panel nut		N.cm

Mating life	5000	Cycles mini
Weight	0.8200	g

Issue : 0823 A

In the effort to improve our products, we reserve the rights to make changes judged to be necessary.

