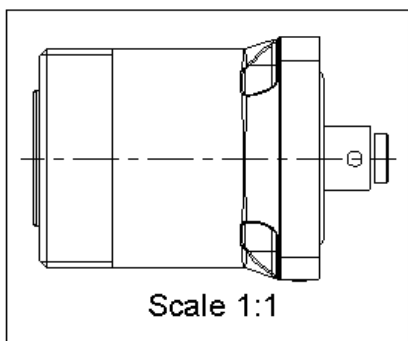
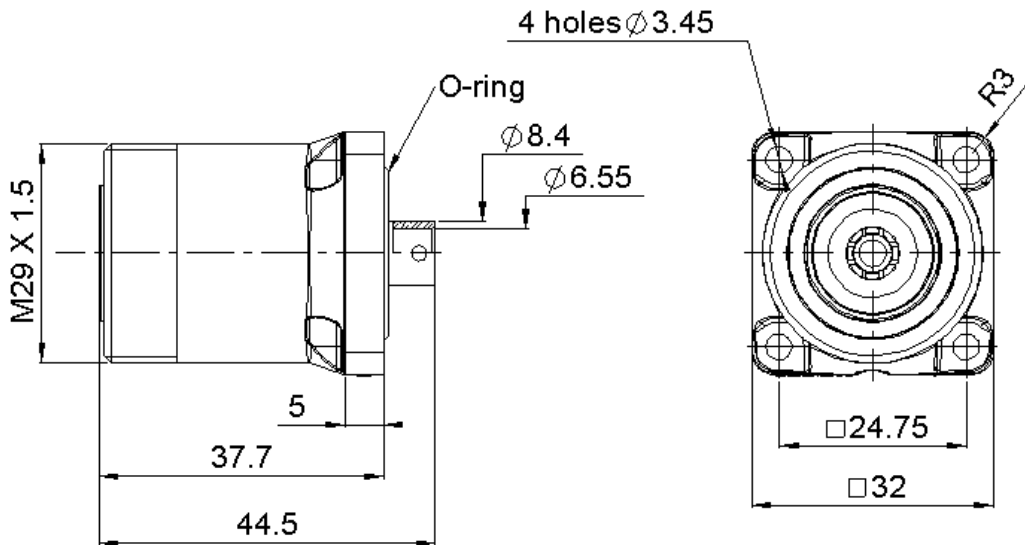


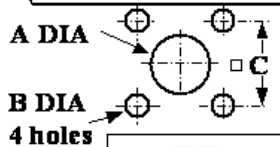
**COMPOSITE STRAIGHT SQUARE FLANGE JACK  
SOLDER TYPE  
CABLE .250**

**R187.130.000**

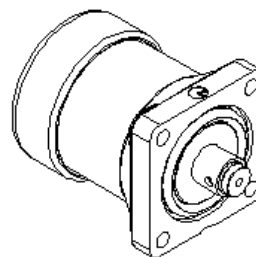
Series : 7/16 COMPOSITE



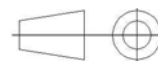
**PANEL CUT OUT**



	mm	
	Maxi	mini
A	16.2	16
B	3.7	3.6
C	24.8	24.7



All dimensions are in mm.



COMPONENTS	MATERIALS	PLATING (µm)
BODY	COMPOSITE MATERIAL - BLACK	
CENTER CONTACT	BRONZE	SILVER 5 OVER COPPER 0.5
OUTER CONTACT	BRASS	ARGENT 3 SUR-BBR 0.5
INSULATOR	PTFE	
GASKET	SILICONE RUBBER	
OTHERS PARTS		
-	-	
-	-	

Issue : 0908 A

In the effort to improve our products, we reserve the right to make changes judged to be necessary.



**COMPOSITE STRAIGHT SQUARE FLANGE JACK  
SOLDER TYPE  
CABLE .250**

**R187.130.000**

Series : 7/16 COMPOSITE

**PACKAGING**

Standard	Unit	Other
<b>10</b>	<b>'W' option</b>	<b>Contact us</b>

**SPECIFICATION**

**807752-0E - -**

**CABLE ASSEMBLY**

Stripping	a	b	c	d	e	f
mm	5.10	0.00	0.00	0.00	0.00	0.00

**ELECTRICAL CHARACTERISTICS**

Impedance	<b>50</b>	$\Omega$
Frequency	<b>0-7.5</b>	GHz
VSWR	<b>1.20*</b> + <b>0.0000</b>	x F(GHz) Maxi
Insertion loss	<b>0.05</b>	$\sqrt{F}$ (GHz) dB Maxi
RF leakage	- ( <b>NA</b> )	- F(GHz)) dB Maxi
Voltage rating	<b>1400</b>	Veff Maxi
Dielectric withstanding voltage	<b>2700</b>	Veff mini
Insulation resistance	<b>10000</b>	M $\Omega$ mini

Assembly instruction :

Recommended cable(s)  
KS 3  
RG 401

Characteristics indicated on this data sheet are those that can be achieved with the highest performance cable. Intrinsic limitations of the cable may diminish the performance of the assembly

Cable retention

- pull off	<b>200</b>	N mini
- torque	<b>NA</b>	N.cm

**MECHANICAL CHARACTERISTICS**

Center contact retention		
Axial force – Mating end	<b>200</b>	N mini
Axial force – Opposite end	<b>100</b>	N mini
Torque	<b>NA</b>	N.cm mini

**TOOLING**

Part Number	Description	Hexagon
.	.	.

Recommended torque		
Mating	<b>NA</b>	N.cm
Panel nut	<b>NA</b>	N.cm
Clamp nut	<b>NA</b>	N.cm
A/F clamp nut	<b>0.0000</b>	mm

**OTHER CHARACTERISTICS**

VSWR : 1.2 max0~7.5GHz

PIM3:-125dBm under 2 carriers of +43dBm

Mating life	<b>500</b>	Cycles mini
Weight	<b>75.1700</b>	g

**ENVIRONMENTAL**

Operating temperature	<b>-40/+85</b>	$^{\circ}$ C
Hermetic seal	<b>NA</b>	Atm.cm3/s
Panel leakage	<b>IP67</b>	

Issue : 0908 A

In the effort to improve our products, we reserve the right to make changes judged to be necessary.



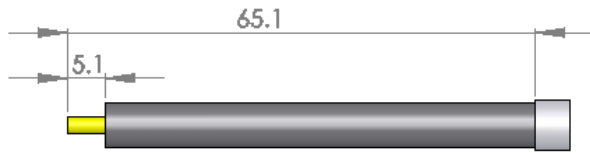
PRELIMINARY

**COMPOSITE STRAIGHT SQUARE FLANGE JACK  
SOLDER TYPE  
CABLE .250**

**R187.130.000**

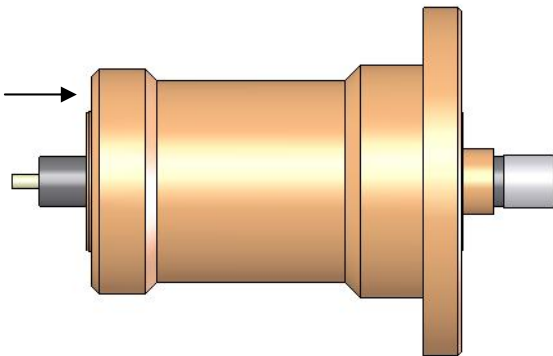
**Series : 7/16 COMPOSITE**

**ASSEMBLY INSTRUCTION**



**Step 1**

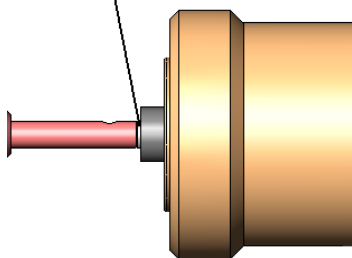
- Remove jacket and dielectric of the cable with stripping tool.
- Trim cable inner conductor with trimmer.
- Check dimension 5.1 mm.



**Step 2**

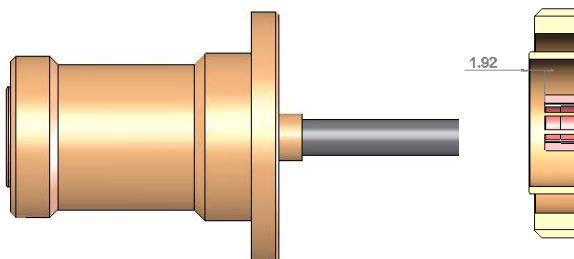
- Push the prepared cable through body.

PTFE washer



**Step 3**

- Input the PTFE washer into cable inner contact,
- Solder the center contact to the cable inner contact (-Solder in wire or paste form can be used.
- Solder with induction soldering, solder tongs or solder iron).



**Step 4**

- Push center contact with hand press until stop,
- check interface dimension 1.92.

**CAUTION:**

To make sure the solder joint on the center contact will not be damaged, it is important to push the center contact and not to pull at the cable

**Issue : 0908 A**

In the effort to improve our products, we reserve the right to make changes judged to be necessary.



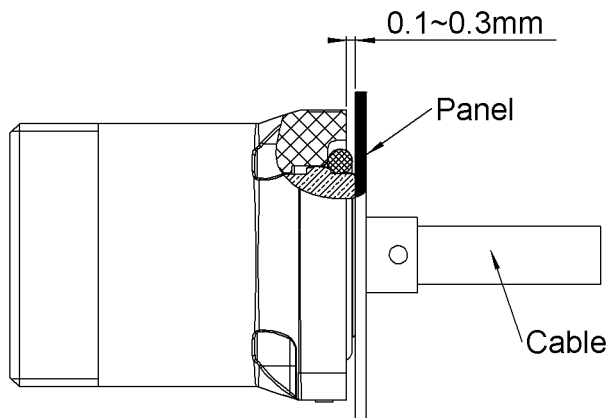
**COMPOSITE STRAIGHT SQUARE FLANGE JACK  
SOLDER TYPE  
CABLE .250**

**R187.130.000**

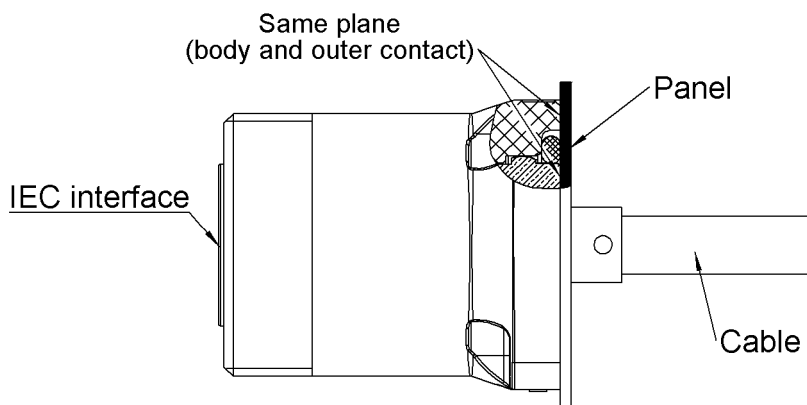
**Series : 7/16 COMPOSITE**

**Assembly instruction**

Before the installation, the outer contact is slightly protruded from the rear flange (0.1~0.3mm).  
During the installation, the outer contact is pushed inside the composite housing.  
In its final position, the outer contact is aligned with the rear flange, and in contact with the panel.  
During mating, the outer contact is pressed against the panel, reducing significantly the IM3 generation.



**Before assembly**



**After assembly**

**Issue : 0908 A**

In the effort to improve our products, we reserve the right to make changes judged to be necessary.



PRELIMINARY