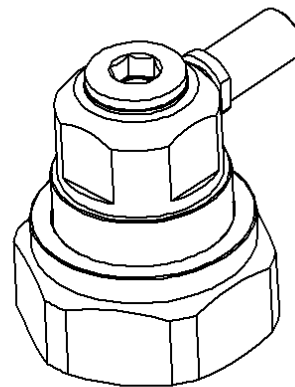
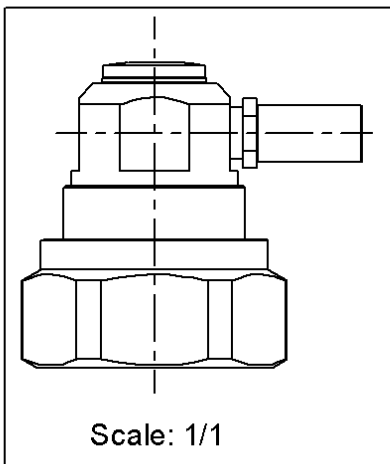
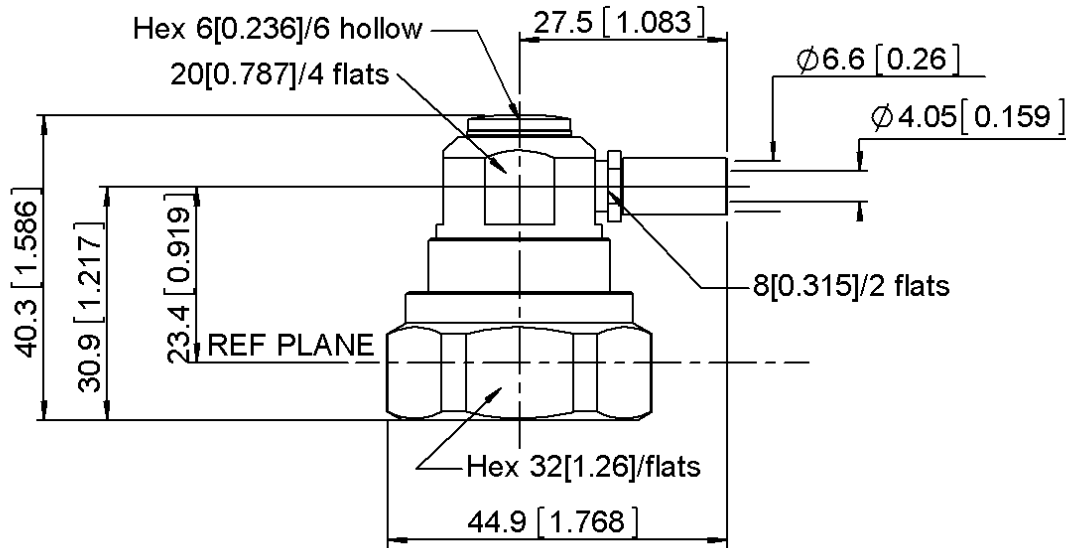


**RIGHT ANGLE PLUG CRIMP TYPE  
FOR AEP-240FR CABLE**

**R185.183.100**

Series : 7-16



All dimensions are in mm.

COMPONENTS	MATERIALS	PLATING (µm)
BODY	BRASS.	BBR 0.5 OVER SILVER 3
CENTER CONTACT	BRASS.	SILVER 5 OVER COPPER 0.5
OUTER CONTACT	BRASS.	SILVER 5 OVER COPPER 0.5
INSULATOR	PTFE	
GASKET	SILICONE RUBBER	
OTHERS PARTS	BRASS.	BBR2
-	-	
-	-	

Issue : 1251 A

In the effort to improve our products, we reserve the right to make changes judged to be necessary.  
 This document contains proprietary information and such information shall not be disclosed to any third party for any purpose whatsoever or used for manufacturing purposes without prior written agreement from RADIALL



**RIGHT ANGLE PLUG CRIMP TYPE  
FOR AEP-240FR CABLE**

**R185.183.100**

Series : 7-16

**PACKAGING**

Standard	Unit	Other
20	'W' option	Contact us

**SPECIFICATION**

**ELECTRICAL CHARACTERISTICS**

Impedance	50	Ω
Frequency	0-2	GHz
VSWR	TBD + 0.0000	x F(GHz) Maxi
Insertion loss	TBD	√F(GHz) dB Maxi
RF leakage	- ( TBD	- F(GHz)) dB Maxi
Voltage rating	500	Veff Maxi
Dielectric withstanding voltage	1500	Veff mini
Insulation resistance	10000	MΩ mini

**CABLE ASSEMBLY**

Stripping	a	b	c	d	e	f
mm	4.50	6.80	21.0	0.00	16.5	0.00

Assembly instruction :

Recommended cable(s)

LMR 240  
AEP-240FR

Characteristics indicated on this data sheet are those that can be achieved with the highest performance cable. Intrinsic limitations of the cable may diminish the performance of the assembly

Cable retention

- pull off	N mini
- torque	NA N.cm

**MECHANICAL CHARACTERISTICS**

Center contact retention	
Axial force – Mating end	200 N mini
Axial force – Opposite end	100 N mini
Torque	2 N.cm mini

**TOOLING**

Recommended torque	
Mating	3500 N.cm
Panel nut	NA N.cm
Clamp nut	220 N.cm
A/F clamp nut	0.0000 mm

Part Number	Description	Hexagon
.	.	.
R282.223.000	CRIMPING TOOL	6.48
R282.235.013	CRIMPING DIES	6.48
R282.293.000	CRIMPING TOOL M22520/5-01	

Mating life	500 Cycles mini
Weight	126.1700 g

**OTHER CHARACTERISTICS**

**ENVIRONMENTAL**

Operating temperature	-55/+155 °C
Hermetic seal	NA Atm.cm3/s
Panel leakage	NA

Issue : 1251 A

In the effort to improve our products, we reserve the right to make changes judged to be necessary.  
This document contains proprietary information and such information shall not be disclosed to any third party for any purpose whatsoever or used for manufacturing purposes without prior written agreement from RADIALL

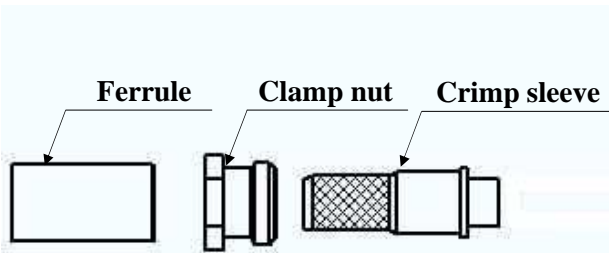


**RIGHT ANGLE PLUG CRIMP TYPE**  
**FOR AEP-240FR CABLE**

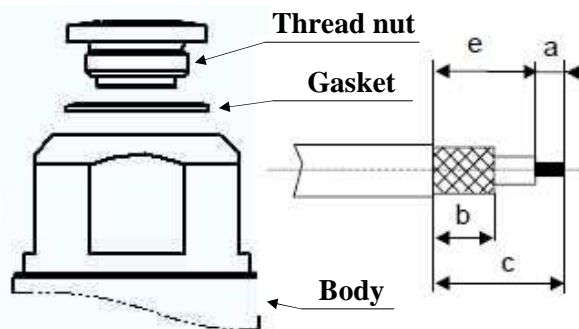
**R185.183.100**

Series : 7-16

**COMPONENTS**



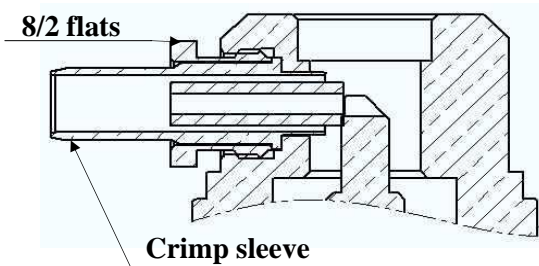
**STRIPPING DIMENSIONS**



**1**

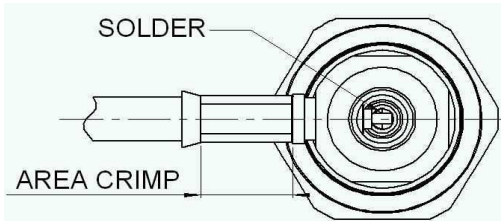
Mount the clamp nut on the crimp sleeve and screw set in the body.

Coupling torque recommended : 220 Ncm



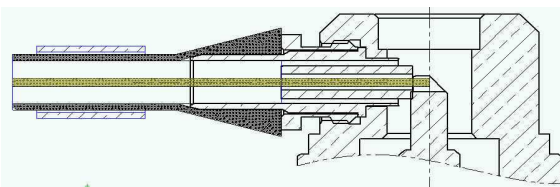
**3**

Crimp the ferrule on the cable by mantening it pushed into the connector.  
Solder the cable inner conductor onto the center contact



**2**

Strip the cable  
Slide the ferrule onto the cable.  
Fan the braid, split the cable foil  
Slide set in the barrel

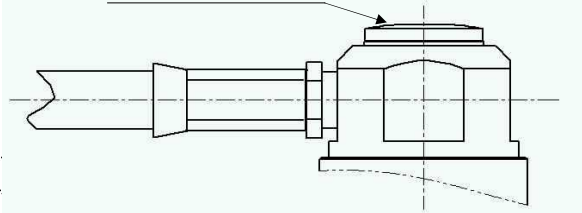


**4**

Screw the thread nut with the gasket

Coupling torque recommended : 900 Ncm

**Hex 6/6 on hollow**



Issue : 1251 A

In the effort to improve our products, we reserve the right to make changes judged to be necessary.  
*This document contains proprietary information and such information shall not be disclosed to any third party for any purpose whatsoever or used for manufacturing purposes without prior written agreement from RADIALL*



PROHIBITED