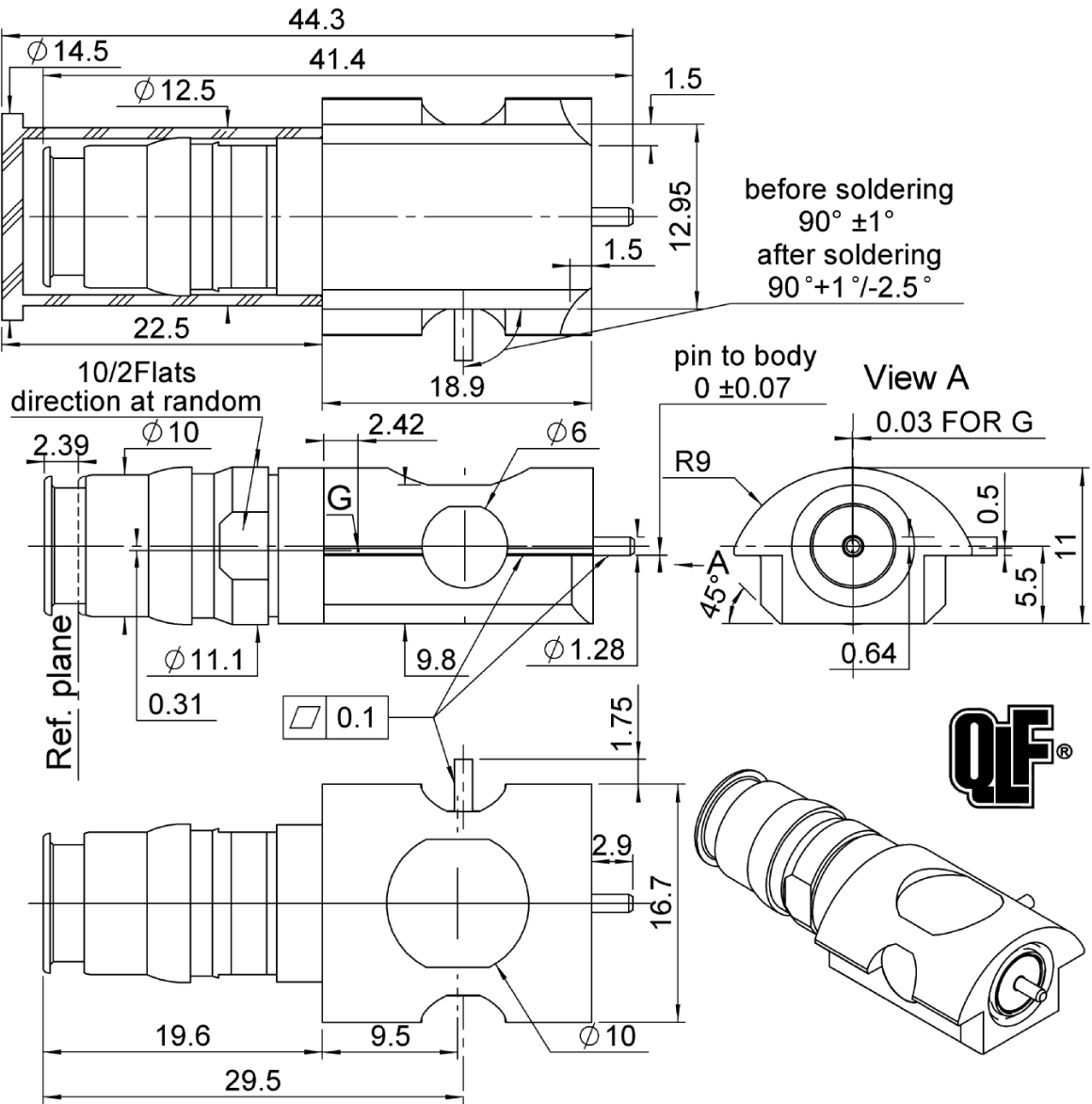


QN SWITCH EDGE CARD SMT LEFT TYPE

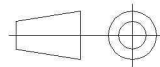
R164.428.823

PACKAGING IN REEL 110

Series : QN



All dimensions are in mm.



COMPONENTS	MATERIALS	PLATING (µm)
BODY	BRASS	NPGR, BBR 2
CENTER CONTACT	BERYLLIUM COPPER	NPGR
OUTER CONTACT	BRASS	BBR 2
INSULATOR	PEEK, PTFE	
GASKET		
OTHERS PARTS	BRASS	NPGR
-	-	-
-	-	-

Issue : 1107 A

In the effort to improve our products, we reserve the right to make changes judged to be necessary.



QN SWITCH EDGE CARD SMT LEFT TYPE

R164.428.823

PACKAGING IN REEL 110

Series : QN

PACKAGING

SPECIFICATION

Standard	Unit	Other
110	'W' option	Contact us

1301-RNT 408 4030 Uen Rev.D

ELECTRICAL CHARACTERISTICS

ENVIRONMENTAL

Impedance	50	Ω
Frequency	DC-3	GHz
VSWR	1.1 + 0,0900	x F(GHz) Maxi
Isolation at DC to 1 GHz	-47	dB Typical
Isolation at 1 to 2 GHz	-43	dB Typical
Isolation at 2 to 3 GHz	-40	dB Typical
Insertion loss at DC to 1 GHz	0.1	dB Maxi
Insertion loss at 1 to 2 GHz	0.15	dB Maxi
Insertion loss at 2 to 3 GHz	0.2	dB Maxi
RF leakage	- (NA)	- F(GHz)) dB Maxi
Voltage rating	300	Veff Maxi
Dielectric withstanding voltage	500	Veff mini
Insulation resistance	5000	M Ω mini
Power withstanding	110	W at 2GHz

Operating temperature	-40/+85	$^{\circ}$ C
Hermetic seal	NA	Atm.cm3/s
Panel leakage	NA	

OTHER CHARACTERISTICS

Assembly instruction **NA**

Others :

Action Mating Force for the spring: 20N max

(1) Do not apply force on the center contact before mounting the switch on PCB

MECHANICAL CHARACTERISTICS

Center contact retention		
Axial force – Mating end	NA	N mini
Axial force – Opposite end	NA	N mini
Torque	NA	N.cm mini
Axial force side pin	(1)	
Recommended torque		
Mating	NA	N.cm
Panel nut	NA	N.cm
Mating life	100	Cycles mini
Weight	27,7400	g

Issue : 1107 A

In the effort to improve our products, we reserve the right to make changes judged to be necessary.



QN SWITCH EDGE CARD SMT LEFT TYPE

R164.428.823

PACKAGING IN REEL 110

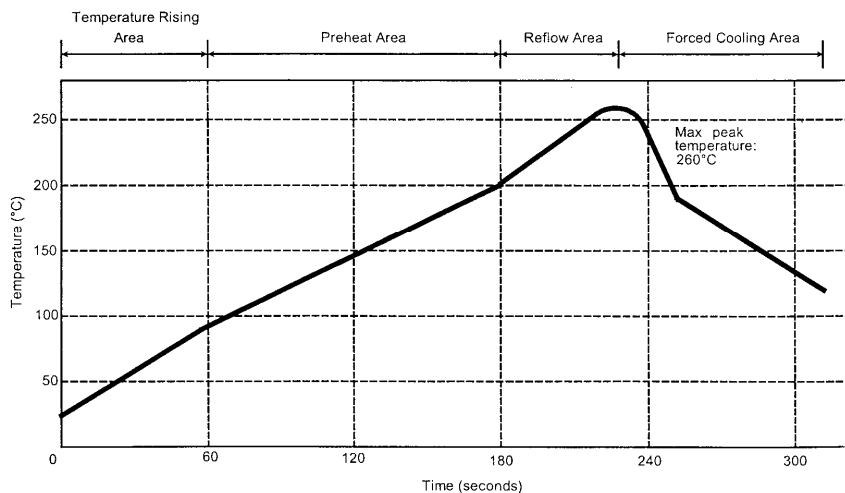
Series : QN

SOLDER PROCEDURE

1. Deposit solder paste ‘Sn Ag4 Cu0.5’ on mounting zone by screen printing application. We recommend a low residue flux.
We advise a thickness of 150 microm (5.850 microinch). Verify that the edges of the zone are clean.
2. Placement of the receptacle on the mounting zone with an automatic machine of ‘pick and place’ type. A video camera is recommended for positioning of the component . Adhesive agents must not be used on the receptacle.
3. This process of soldering has been tested with convection oven .Below please find ,the typical profile to use.
4. The cleaning of printed circuit boards is not obliged .
5. Verification of solder joints and position of the component by visual inspection.

NOTE : The receptacle and the plug must not be mated before completion of this procedure

TEMPERATURE PROFILE



Parameter	Value	Unit
Temperature rising Area	1 - 4	°C/sec
Max Peak Temperature	260	°C
Max dwell time @260°C	10	sec
Min dwell time @235°C	20	sec
Max dwell time @235°C	60	sec
Temperature drop in cooling Area	-1 to - 4	°C/sec
Max dwell time above 100°C	420	sec

Issue : 1107 A

In the effort to improve our products, we reserve the right to make changes judged to be necessary.



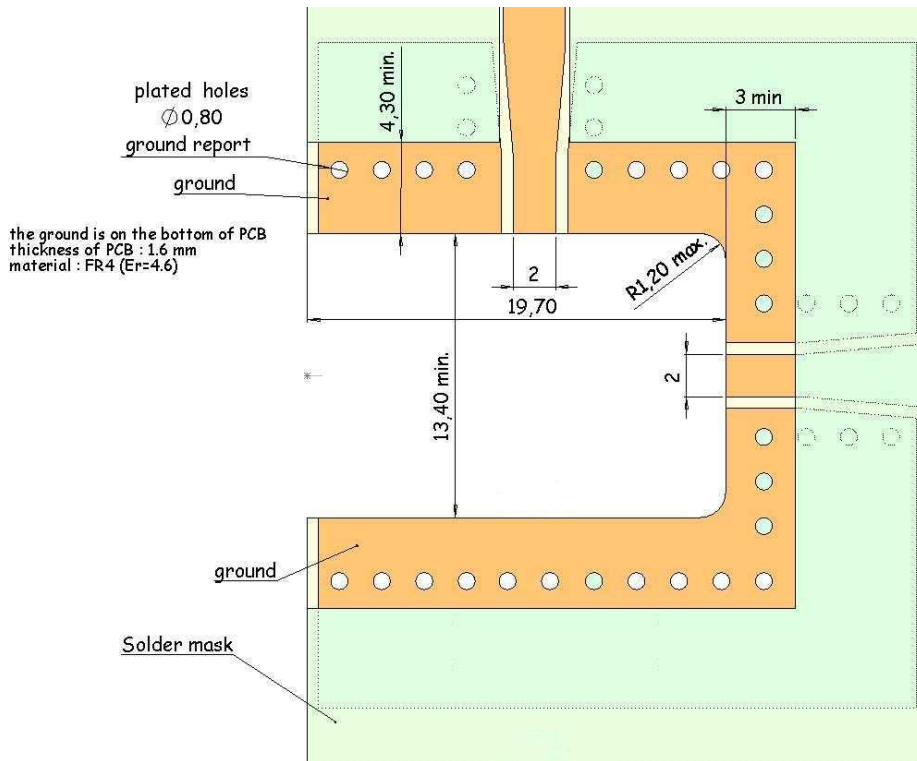
QN SWITCH EDGE CARD SMT LEFT TYPE

R164.428.823

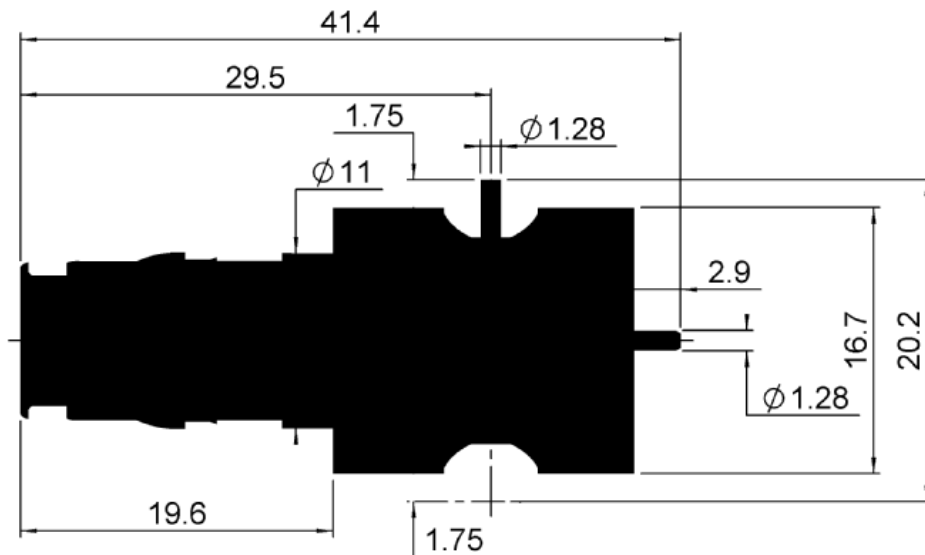
PACKAGING IN REEL 110

Series : QN

PCB for QN switch



Shadow of QN switch for video camera



Issue : 1107 A

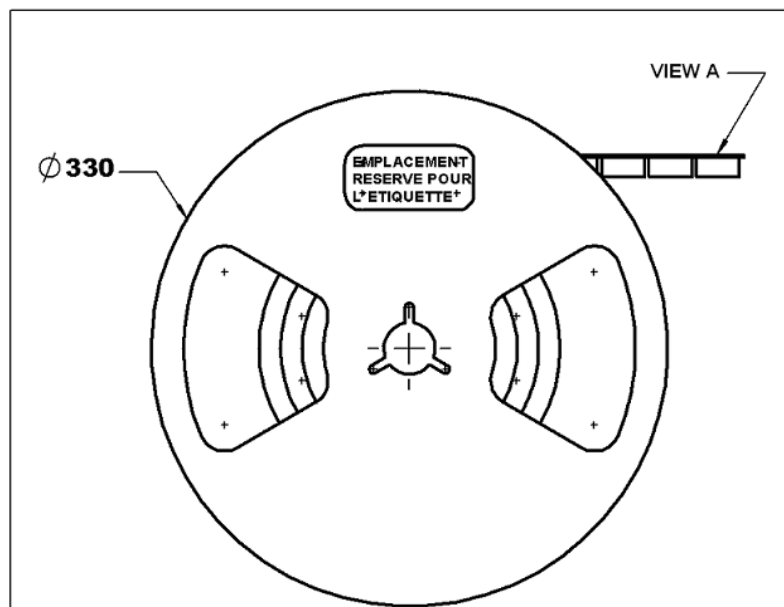
In the effort to improve our products, we reserve the right to make changes judged to be necessary.

QN SWITCH EDGE CARD SMT LEFT TYPE

R164.428.823

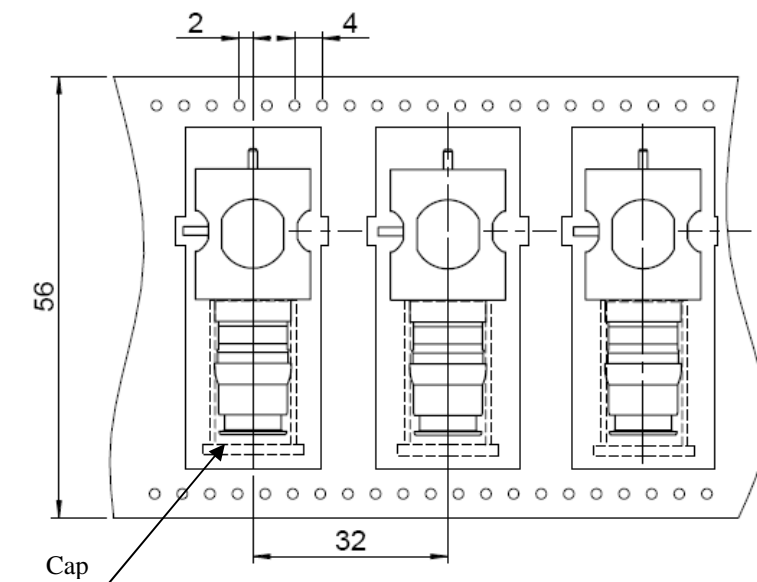
PACKAGING IN REEL 110

Series : QN



bobine Ech :0.7

TAPE FEED DIRECTION



VIEW A

Issue : 1107 A

In the effort to improve our products, we reserve the right to make changes judged to be necessary.