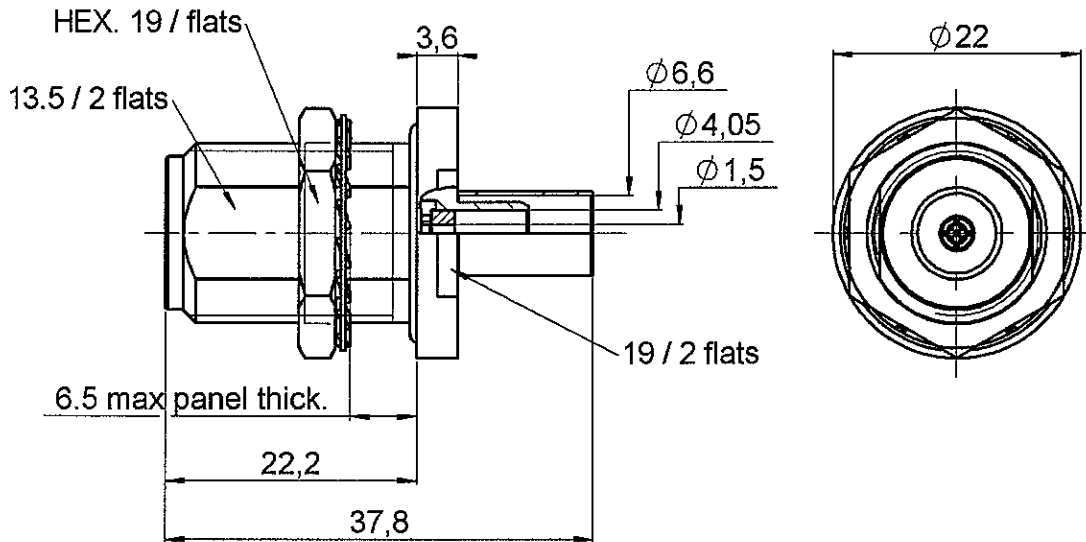


STRAIGHT BULKHEAD JACK PANEL SEAL

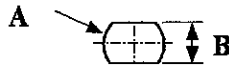
R161.329.140

CABLE LMR240

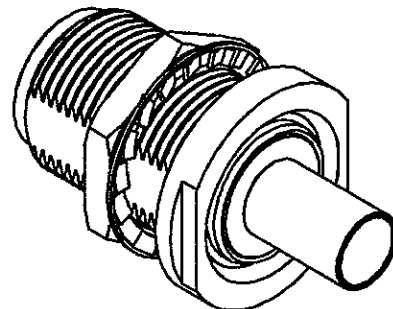
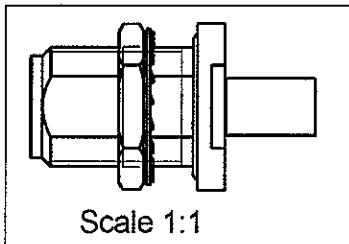
Series : N



PANEL CUT OUT



	mm	
	Maxi	mini
A	16.1	16
B	13.7	13.6



All dimensions are in mm.



COMPONENTS	MATERIALS	PLATING (μm)
BODY	BRASS	BBR 2
CENTER CONTACT	BERYLLIUM COPPER	GOLD 0.5 OVER NICKEL 2
OUTER CONTACT	-	-
INSULATOR	PTFE	-
GASKET	SILICONE RUBBER	-
OTHERS PARTS	BRASS	BBR 2
-	-	-
-	-	-

Issue : 0602 A

In the effort to improve our products, we reserve the right to make changes judged to be necessary.



STRAIGHT BULKHEAD JACK PANEL SEAL

R161.329.140

CABLE LMR240

Series : N

PACKAGING

Standard	Unit	Other
50	'W' option	Contact us

SPECIFICATION

ELECTRICAL CHARACTERISTICS

Impedance		50 Ω
Frequency		*0-11 GHz
VSWR	1.30 +	0,0000 x F(GHz) Maxi
Insertion loss		0,048 √F(GHz) dB Maxi
RF leakage	- (NA - F(GHz)) dB Maxi
Voltage rating		850 Veff Maxi
Dielectric withstanding voltage		1500 Veff mini
Insulation resistance		5000 MΩ mini

CABLE ASSEMBLY

Stripping	a	b	c	d	e	f
mm	6,80	6,30	13,4	0,00	6,60	0,00

Assembly instruction : **Crimp 01**

Recommended cable(s)
LMR 240

Characteristics indicated on this data sheet are those that can be achieved with the highest performance cable. Intrinsic limitations of the cable may diminish the performance of the assembly

Cable retention

- pull off **150** N mini
- torque **NA** N.cm

MECHANICAL CHARACTERISTICS

Center contact retention		
Axial force – Mating end	27	N mini
Axial force – Opposite end	27	N mini
Torque	NA	N.cm mini

Recommended torque		
Mating	NA	N.cm
Panel nut	500	N.cm
Clamp nut	NA	N.cm
A/F clamp nut	0,0000	mm

Mating life	500	Cycles mini
Weight	36,2000	g

TOOLING

Part Number	Description	Hexagon
.	.	.
R282.293.000	CRIMPING TOOL	
R282.235.013	CRIMPING DIES	
R282.223.000	CRIMPING TOOL	

OTHER CHARACTERISTICS

*de 0 à 8 Ghz

ENVIRONMENTAL

Operating temperature	-55/+155	°C
Hermetic seal	NA	Atm.cm3/s
Panel leakage	IP 67	

Issue : 0602 A

In the effort to improve our products, we reserve the right to make changes judged to be necessary.



RADIALL®

STRAIGHT BULKHEAD JACK PANEL SEAL

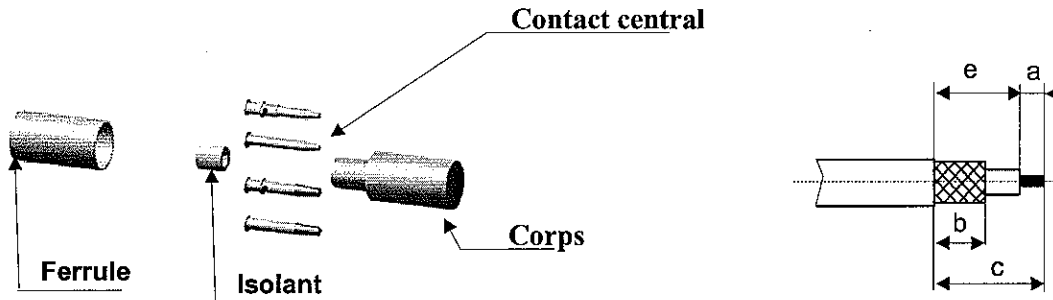
R161.329.140

CABLE LMR240

Series : N

COMPOSANTS

COTES DE DENUDAGE DU CÂBLE



1

Glisser la ferrule sur le câble.
Dénuder le câble suivant les cotes ci dessus.

4

Monter le sous ensemble câble dans le corps, en butée sur l'isolant.

2

Epanouir la tresse.
Monter le manchon réducteur entre le diélectrique et la tresse.
Monter l'isolant.

5

Glisser la ferrule sur la tresse.

3

Monter le contact central en butée sur le diélectrique du câble.
Souder ou sertir le contact central avec la pince (voir fiche technique du connecteur).
Enlever le surplus de soudure et nettoyer si nécessaire.

6

Sertir la ferrule avec la pince (voir fiche technique du connecteur).
Enlever le surplus de tresse.

Issue : 06
In the eff
necessary.

o mak

