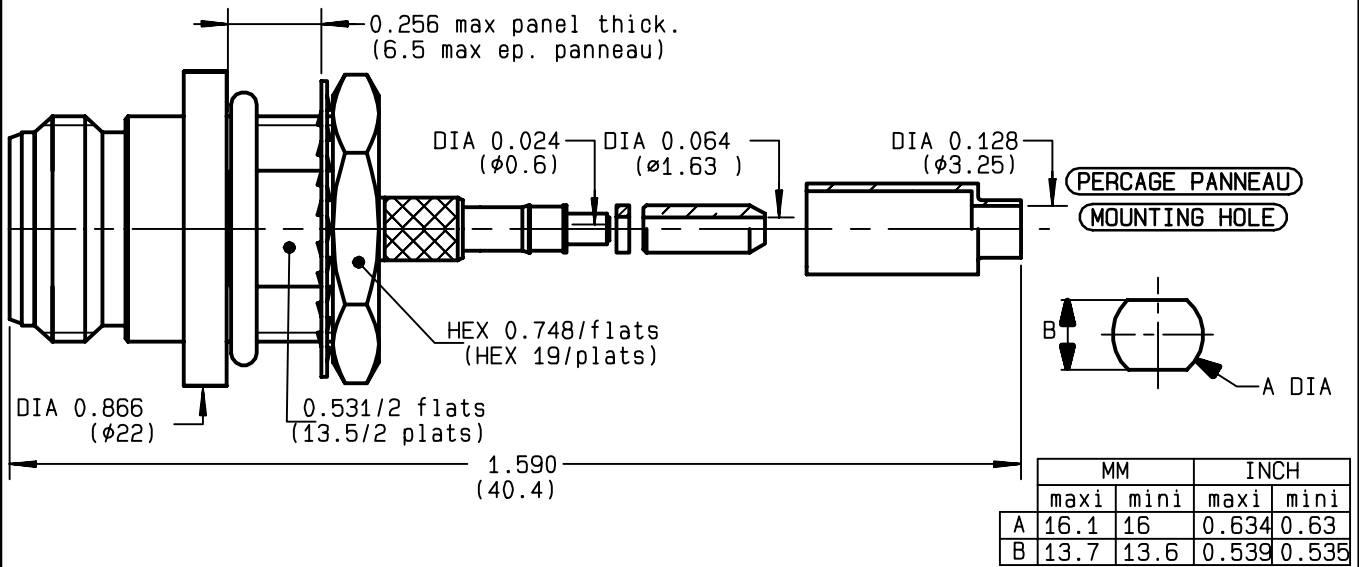


**STRAIGHT BULKHEAD JACK PANEL SEAL  
FULL CRIMP-TYPE - CABLE 2.6/50 S+D**

**R161.311.200**  
**SERIES N**



|                                 |                 |                        |
|---------------------------------|-----------------|------------------------|
| NOMINAL IMPEDANCE               | <b>50</b>       | Ω                      |
| FREQUENCY RANGE                 | <b>0-11</b>     | GHz                    |
| TEMPERATURE RATING              | <b>-55/+155</b> | °C                     |
| V.S.W.R                         | <b>1.40</b> +   | x F(GHz)Maxi           |
| RF INSERTION LOSS               | <b>0.048</b>    | √F(GHz) dB Maxi        |
| VOLTAGE RATING                  | <b>250</b>      | Veff Maxi              |
| DIELECTRIC WITHSTANDING VOLTAGE | <b>750</b>      | Veff Mini              |
| INSULATION RESISTANCE           | <b>5000</b>     | MΩMini                 |
| HERMETIC SEAL                   | <b>NA</b>       | Atm.cm <sup>3</sup> /s |
| LEAKAGE (pressurized only)      | <b>IP 67</b>    |                        |
| MECHANICAL DURABILITY           | <b>500</b>      | Cycles                 |
| WEIGHT                          | <b>36</b>       | gr                     |
| SPECIFICATION                   |                 |                        |

CABLES : **K02252D**  
**KX 22A**  
**RD 316**  
**RG 188**  
**RG 316**

OTHERS CHARACTERISTICS

|                            |            |           |
|----------------------------|------------|-----------|
| CABLE RETENTION            | <b>40</b>  | N Mini    |
| CENTER CONTACT RETENTION   |            |           |
| Axial force - mating end   | <b>68</b>  | N Mini    |
| Axial force - opposite end | <b>68</b>  | N Mini    |
| Torque                     | <b>NA</b>  | cm.N Mini |
| RECOMMENDED TORQUES        |            |           |
| Mating                     | <b>NA</b>  | cm.N      |
| Panel nut                  | <b>500</b> | cm.N      |
| Clamp nut                  | <b>NA</b>  | cm.N      |

| CONNECTOR PARTS | MATERIALS        | FINISH                 | (all values are given in micrometers) |
|-----------------|------------------|------------------------|---------------------------------------|
| BODY            | BRASS            | BBR 2                  |                                       |
| OUTER CONTACT   | BRASS            | BBR 2                  |                                       |
| CENTER CONTACT  | BERYLLIUM COPPER | GOLD 0.5 OVER NICKEL 2 |                                       |
| INSULATOR       | PTFE             | -                      |                                       |
| GASKET          | SILICONE RUBBER  | -                      |                                       |
| OTHERS PIECES   | BRASS            | BBR 2                  |                                       |

|                |                   |                  |
|----------------|-------------------|------------------|
| ISSUE          | CREATION DATE     | FILE PART-NUMBER |
| <b>0012B00</b> | <b>05/03/1997</b> | <b>EPC 96-07</b> |



GONZALES

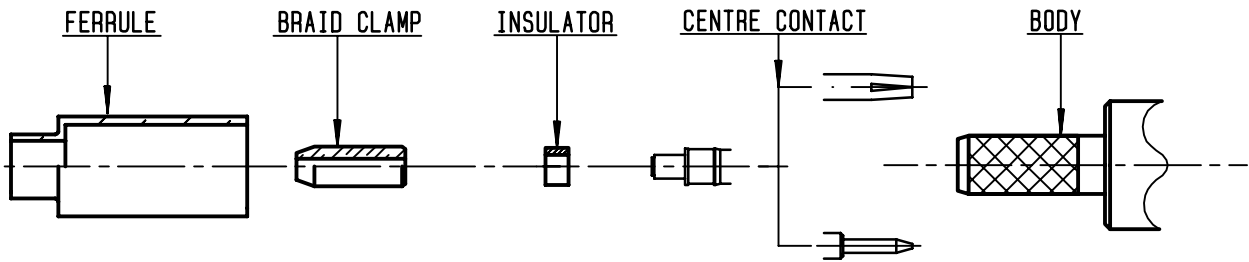
The information given here is subject to change without notice.  
Design changes may be in order to improve the product .

*Connect to the future*



**R161.311.200**

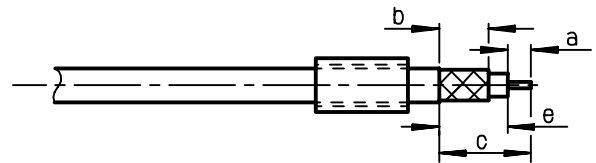
ISSUE **0012B00** SERIES **N**



①

Slide onto the cable the ferrule  
Strip the cable .

-  
-



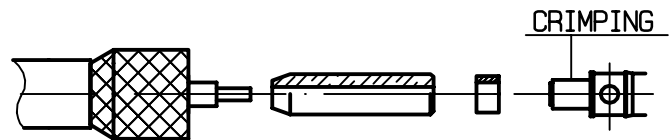
| Stripping | a     | b     | c     | d | e     |
|-----------|-------|-------|-------|---|-------|
| inch      | 0.177 | 0.315 | 0.551 | 0 | 0.374 |
| mm        | 4.5   | 8     | 14    |   | 9.5   |

②

Fan the braid .  
Slide the braid clamp and insulator  
between the dielectrique and the braid .  
Slide on centre contact until it  
bottoms against cable dielectrique .

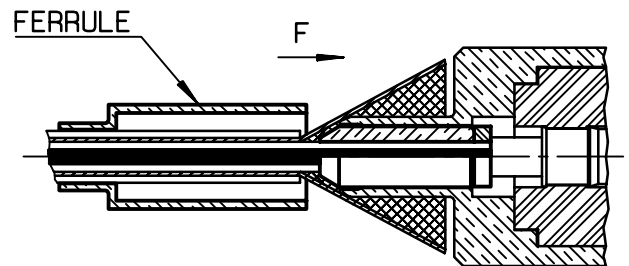
Crimp centre contact .

Crimping tool : R282 223 000 ( Hex. : 0.068 )  
or crimping tool R282 293 000 ( M22520/5-01 )  
+ dies R282 235 011 ( M22520/5-11 )



③

Slide cable dielectric into the body  
while gently grinding the braid over the knurl  
Push until the dielectric clicks into  
position .  
Slide ferrule over braid in direction F .



④

Crimp the ferrule with crimping tool  
R 282 223 000 ( Hex. : 0.213 ) or  
crimping tool R282 293 000 ( M22520/5-01 )  
+ dies R282 235 011 ( M22520/5-11 )  
Cut the excess of braid .

-  
-

