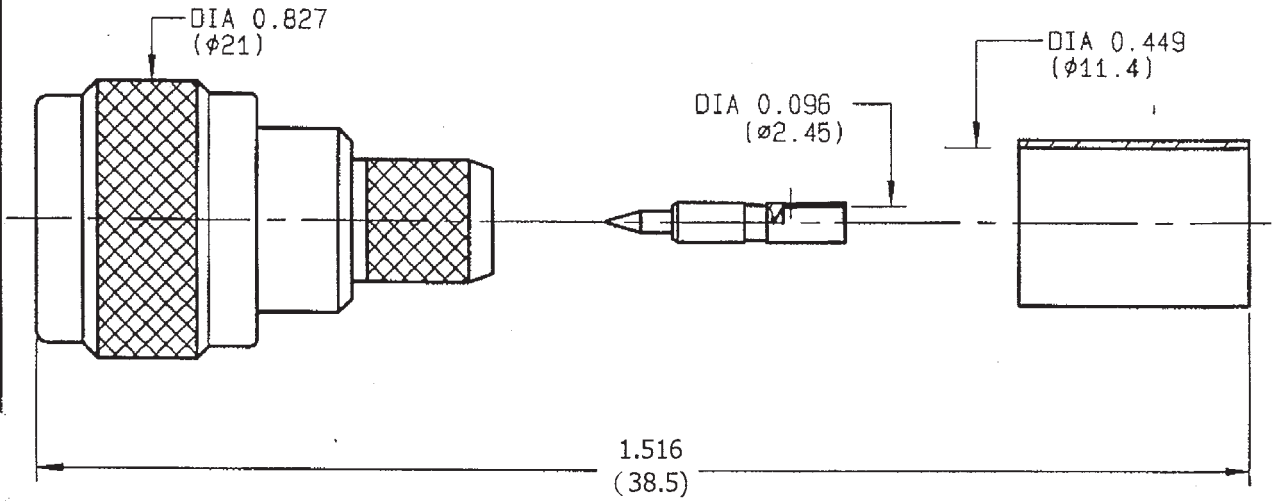


**STRAIGHT PLUG CRIMP TYPE
CABLE 11/50 D**

R161.088.030
SERIES N



NOMINAL IMPEDANCE	50	Ω
FREQUENCY RANGE	0-11	GHz
TEMPERATURE RATING	-55/+155	°C
V.S.W.R	1.30 +	x F(GHz)Maxi
RF INSERTION LOSS	0.048	√F(GHz) dB Maxi
VOLTAGE RATING	1400	Veff Maxi
DIELECTRIC WITHSTANDING VOLTAGE	2500	Veff Mini
INSULATION RESISTANCE	5000	M ΩMini
HERMETIC SEAL	NA	Atm.cm ³ /s
LEAKAGE (pressurized only)	NA	
MECHANICAL DURABILITY	500	Cycles
WEIGHT		g
SPECIFICATION		

CABLES : KX 13
R6 214
R6 225

OTHERS CHARACTERISTICS

CABLE RETENTION	400	N Mini
CENTER CONTACT RETENTION		
Axial force - mating end	27	N Mini
Axial force - opposite end	27	N Mini
Torque	NA	cm.N Mini
RECOMMENDED TORQUES		
Mating	130	cm.N
Panel nut	NA	cm.N
Clamp nut	NA	cm.N

CONNECTOR PARTS	MATERIALS	FINISH	(all values are given in micrometers)
BODY	BRASS	BBR 2	
OUTER CONTACT	BRASS	BBR 2	
CENTER CONTACT	BRASS	GOLD 0.8 OVER NICKEL 2	
INSULATOR	PTFE	-	
GASKET	SILICONE RUBBER	-	
OTHERS PIECES	BRASS	BBR 2	

ISSUE
1203E00

CREATION DATE
20-JAN-12

FILE PART-NUMBER
96-0400-258



RADIALL®

MASTRI

The information given here is subject to change without notice.
Design changes may be in order to improve the product.

Connect to the future

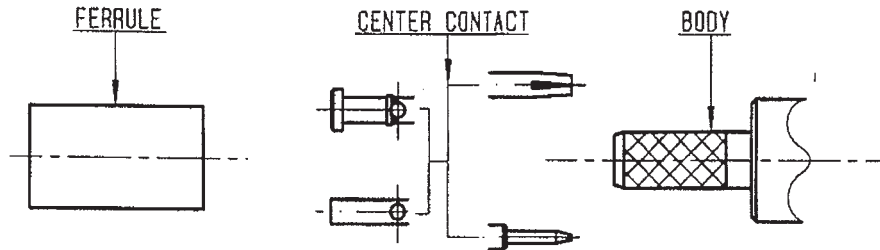


RADIALL®

R161.088.030

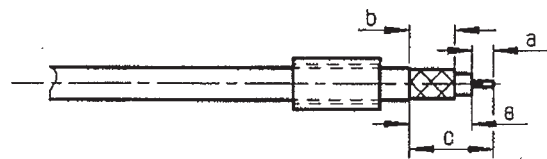
ISSUE 9835000

SERIES N



①

Slide ferrule onto cable
Strip the cable .

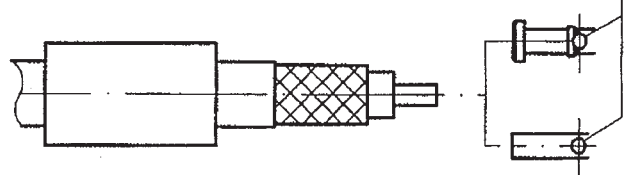


Stripping	a	b	c	d	e
inch	0.189	0.406	0.689	0	0.5
mm	4.8	10.3	17.5		12.7

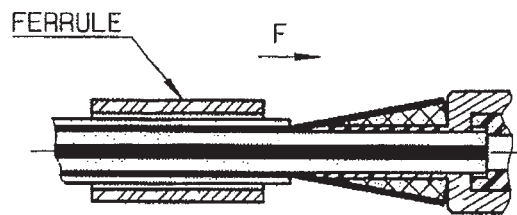
②

Slide center contact on until it bottoms against cable dielectric .
Solder or crimp center contact .
Crimping tool : R282 231 000 (Hex. : 0.100)
or R282 293 000 (M22520/5-01)
+ dies R282 235 116 (Y116 DANIELS).

SOLDER / CRIMPING

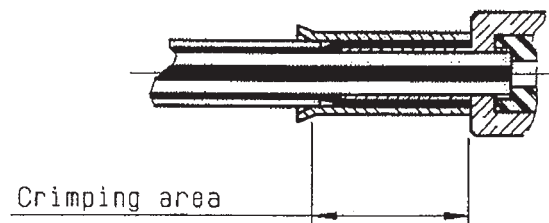


Fan the braid .
Slide cable into the body until bottoms against insulator .
Slide ferrule over the braid .
(In direction F)



④

Crimp the ferrule with crimping tool R 282 231 000 (Hex. : 0.415) or crimping tool R282 293 000 (M22520/5-01) + dies R282 235 116 (Y116 DANIELS)
Cut excess of braid if necessary .



Crimping area