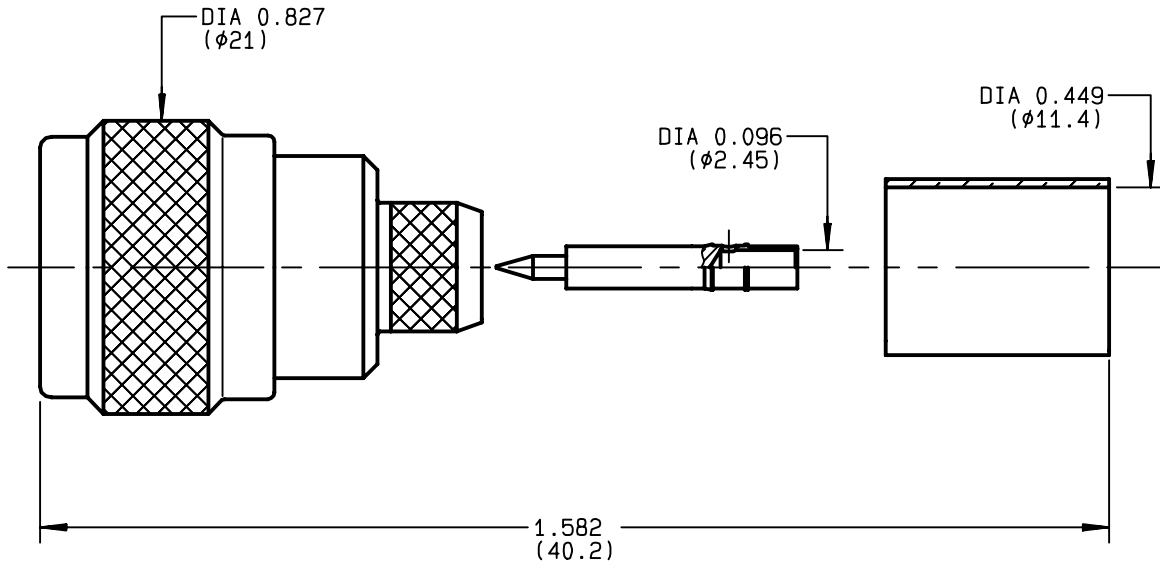


**STRAIGHT PLUG FULL CRIMP-TYPE
CABLE 10.3/50 ETHERNET**

R161.076.000
SERIES N



| | | | |
|---------------------------------|----------------------------------|---|-----------------------------------|
| NOMINAL IMPEDANCE | 50 Ω | CABLES : BICC H8112 | |
| FREQUENCY RANGE | 0-11 GHz | | |
| TEMPERATURE RATING | -55/+155 °C | | |
| V.S.W.R | 1.20 + x F(GHz)Maxi | | |
| RF INSERTION LOSS | 0.048 √F(GHz) dB Maxi | | |
| VOLTAGE RATING | 1400 Veff Maxi | | |
| DIELECTRIC WITHSTANDING VOLTAGE | 2500 Veff Mini | | |
| INSULATION RESISTANCE | 5000 MΩMini | | OTHERS CHARACTERISTICS |
| HERMETIC SEAL | NA Atm.cm ³ /s | | CABLE RETENTION 300 N Mini |
| LEAKAGE (pressurized only) | NA | | CENTER CONTACT RETENTION |
| MECHANICAL DURABILITY | 500 Cycles | Axial force - mating end 68 N Mini | |
| WEIGHT | 36 gr | Axial force - opposite end 68 N Mini | |
| SPECIFICATION | | Torque NA cm.N Mini | |
| | | RECOMMENDED TORQUES | |
| | | Mating 130 cm.N | |
| | | Panel nut NA cm.N | |
| | | Clamp nut NA cm.N | |

| CONNECTOR PARTS | MATERIALS | FINISH | (all values are given in micrometers) |
|-----------------|-----------------|------------------------|---------------------------------------|
| BODY | BRASS | BBR 2 | |
| OUTER CONTACT | BRASS | BBR 2 | |
| CENTER CONTACT | BRASS | GOLD 0.5 OVER NICKEL 2 | |
| INSULATOR | PTFE | - | |
| GASKET | SILICONE RUBBER | - | |
| OTHERS PIECES | BRASS | BBR 2 | |

| | | |
|----------------|-------------------|------------------|
| ISSUE | CREATION DATE | FILE PART-NUMBER |
| 9812H02 | 07/12/1993 | EPC 96-07 |



BONMINI

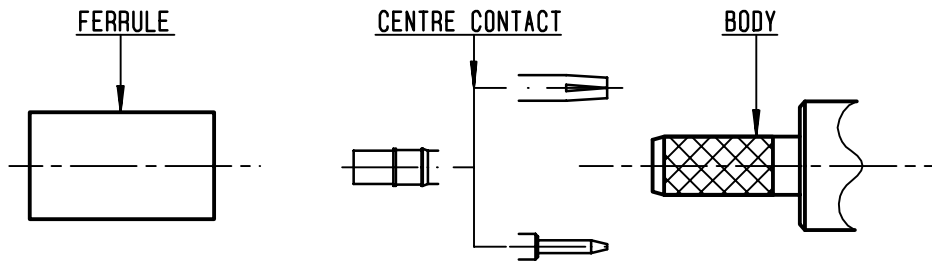
The information given here is subject to change without notice.
Design changes may be in order to improve the product .

Connect to the future



R161.076.000

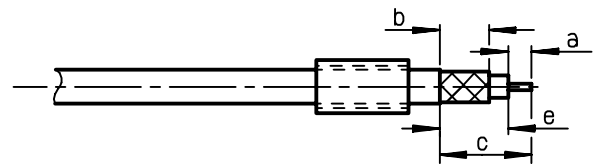
ISSUE **9812H02** SERIES **N**



①

Slide onto the cable the ferrule
Strip the cable .

-
-

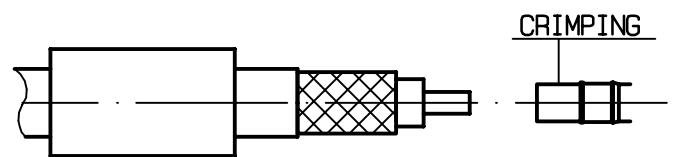


| Stripping | a | b | c | d | e |
|-----------|-------|-------|-------|---|-------|
| inch | 0.197 | 0.354 | 0.591 | 0 | 0.394 |
| mm | 5 | 9 | 15 | | 10 |

②

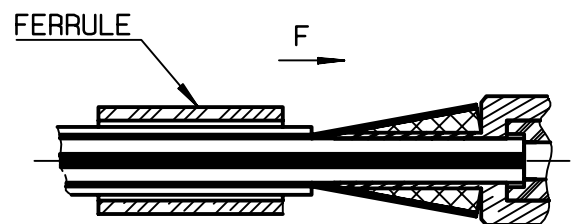
Slide on centre contact until it bottoms against cable dielectrique .
Crimp centre contact .
Crimping tool : R282 231 000 (Hex. : .100)
or R282 293 000 (M22520/5-01)
+ dies R282 235 116 (Y 116 DANIELS).

-
-



③

Fan the braid .
Slide cable dielectrique into the body while gently ginding the braid over the knurl .
Push until the dielectrique clicks into position .
Slide ferrule over braid in direction F .



④

Crimp the ferrule with crimping tool R 282 231 000 (Hex. : .415) or crimping tool R282 293 000 (M22520/5-01)
+ dies R282 235 116 (Y 116 DANIELS).
Cut the excess of braid .

-
-

