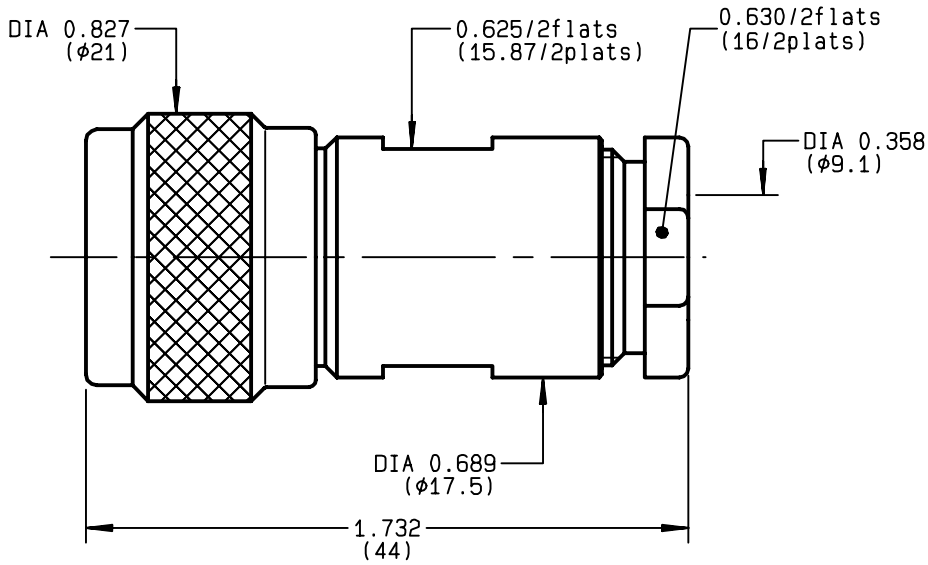


**STRAIGHT PLUG CLAMP TYPE
CABLE 8/50 D**

R161.013.000
SERIES N



| | | |
|---------------------------------|----------------------------------|---|
| NOMINAL IMPEDANCE | 50 Ω | CABLES : RG 212 |
| FREQUENCY RANGE | 0-11 GHz | |
| TEMPERATURE RATING | -55/+155 °C | |
| V.S.W.R | 1.30 + x F(GHz)Maxi | |
| RF INSERTION LOSS | 0.048 √F(GHz) dB Maxi | |
| VOLTAGE RATING | 1400 Veff Maxi | |
| DIELECTRIC WITHSTANDING VOLTAGE | 2500 Veff Mini | |
| INSULATION RESISTANCE | 5000 MΩMini | OTHERS CHARACTERISTICS |
| HERMETIC SEAL | NA Atm.cm ³ /s | CABLE RETENTION 200 N Mini |
| LEAKAGE (pressurized only) | NA | CENTER CONTACT RETENTION |
| MECHANICAL DURABILITY | 500 Cycles | Axial force - mating end NA N Mini |
| WEIGHT | 53.3 gr | Axial force - opposite end NA N Mini |
| SPECIFICATION | | Torque NA cm.N Mini |
| | | RECOMMENDED TORQUES |
| | | Mating 130 cm.N |
| | | Panel nut NA cm.N |
| | | Clamp nut 500 cm.N |

| CONNECTOR PARTS | MATERIALS | FINISH | (all values are given) in micrometers |
|-----------------|-----------------|------------------------|---|
| BODY | BRASS | BBR 2 | |
| OUTER CONTACT | BRASS | BBR 2 | |
| CENTER CONTACT | BRASS | GOLD 0.5 OVER NICKEL 2 | |
| INSULATOR | PTFE | - | |
| GASKET | SILICONE RUBBER | - | |
| OTHERS PIECES | BRASS | BBR 2 | |

| | | |
|----------------|-------------------|------------------|
| ISSUE | CREATION DATE | FILE PART-NUMBER |
| 9809T02 | 26/10/1992 | EPC 96-07 |



BONMINI

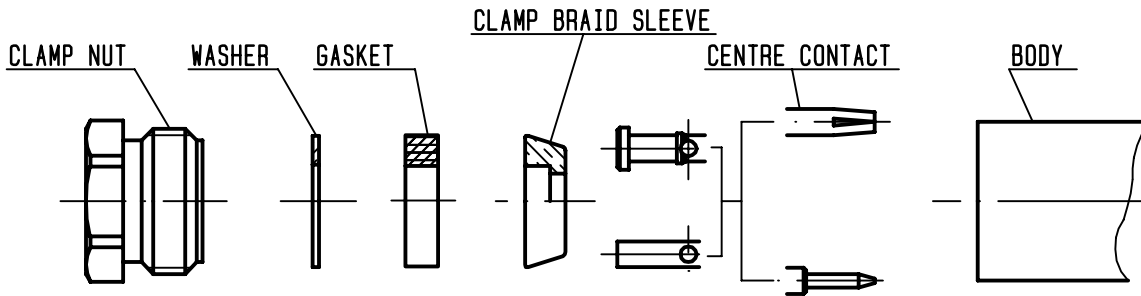
The information given here is subject to change without notice.
Design changes may be in order to improve the product .

Connect to the future



R161.013.000

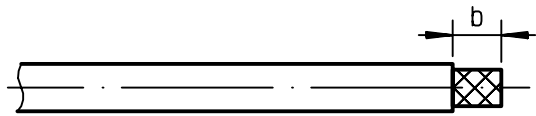
ISSUE 9809T02 SERIES N



①

Strip the cable .

-
-
-
-

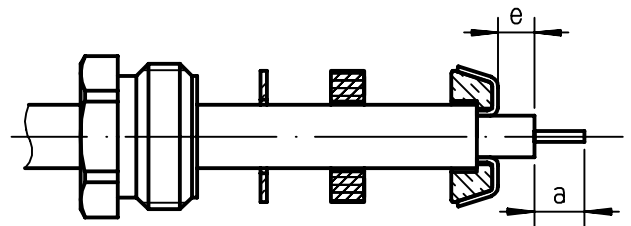


| Stripping | a | b | c | d | e |
|-----------|-------|-------|---|---|-------|
| inch | 0.177 | 0.394 | 0 | 0 | 0.059 |
| mm | 4.5 | 10 | | | 1.5 |

②

Slide the clamp nut , the washer and the gasket onto the cable .
Slide clamp braid sleeve over braid .
Fold back braid and trim off excess of braid .
Trim back dielectric as shown .

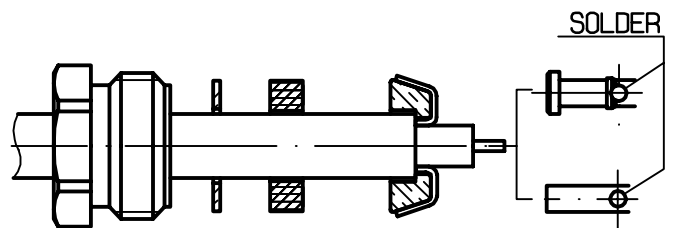
-
-



③

Solder the cable inner conductor into centre contact .

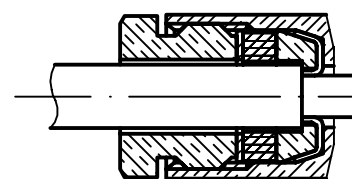
-
-
-
-
-



④

Screw sub-assembly into the connector body .
(recommended coupling torque 44.25 in.lb)

-
-



Hex. : 0.63/flats